



MI  
QUALITY IN VOLUME



# MATERNAL LEGENDS SALE

Sunday, October 20, 2013 at 12:00 PM CST  
at the farm, Dunlap, Iowa

## Welcome to Maternal Legends

Sullivan Farms is committed to genetic excellence. We believe in stacking premier cow families for multiple generations where more consistent and predictable genetics are developed. This philosophy allows us to offer quality in volume with a proven track record.

New for this year's sale is 45 head of multi-breed heifers. Although our passion is being Shorthorn breeders, and it will continue to be, we realize there are good cattle in all breeds. Because of this we developed a small program to offer diversity to this auction. The multi-breed program comes with the same breeding philosophy ... stacking premier cow families.

I would like to thank the entire Sullivan Farms team. A dedicated, humble, and talented group. On good days, bad days and everything in-between, they care and it shows. I respect each and everyone of you and feel fortunate to work with you.

To our customers, new and old, thank you for your interest. We hope you can be with us sale day. We realize there are a lot of genetics offered for sale throughout the country. Sullivan Farms hopes to earn your business the old fashioned way, with good cattle backed up by a program built for the long haul.

Sincerely,

Maternal Legends

# SULLIVAN

farms

John, Dede, Sara & Sage • James • Nick

712.263.0263 • Dunlap, Iowa 51529

[www.maternallegends.com](http://www.maternallegends.com)

John Elder, 402.650.1385

Josh Elder, 402.650.1380



Videos on-line October 5th at [www.youtube.com/SullivanShorthorn](http://www.youtube.com/SullivanShorthorn)



SULL  
Red Blood,  
the breeds  
new young  
superstar.




SULL Right  
Direction, the  
dominate sire  
of structure,  
phenotype and  
fleshing  
ability.

## INDEX

## PAGE #

Shorthorn Open Heifers .....	7 - 22, 24 - 27, 35, 37, 43, 45 47, 50 - 54, 57 - 59
ShorthornPlus Open Heifers .....	23, 30 - 34, 36, 38 - 42, 44, 46
Angus.....	65 - 68
Charolais/Charolais Composite .....	69 - 70
Chi .....	38-40, 74-75
ChiAngus .....	75
Polled & Horned Herefords.....	60 - 64
Maine Open Heifers .....	72 - 73
MaineTainer .....	9, 15, 17, 36-37, 59, 71
Red Angus .....	68 - 69
Simmental & Foundation Simmental .....	76 - 79





Selling

**45** Shorthorn  
Open Heifers

**50** Bred Heifers

**45** Multi-Breed  
Heifers

- Polled & Horned Hereford
- Angus
- Red Angus
- Charolais
- Charolais Composite
- Maine-Anjou
- MaineTainer
- Chi
- ChiAngus
- Simmental
- Foundation Simmental

Selling  
**30** ShorthornPlus  
Open Heifers



# MATERNAL LEGENDS SALE

Sunday, October 20, 2013

12:00 PM CST, at the farm, Dunlap, IA

## Schedule

### FRIDAY, OCTOBER 18th

5:00 PM Shorthorns Up Front Sale, Clarion, Iowa

### SATURDAY, OCTOBER 19th

10:00 AM Cattle available for viewing.  
Food and refreshments will be served all day.

12:30 PM Family Legacies Sale, Creston, Iowa

4:00 PM Watch Live, candid interviews with Livestock World's  
'The Anchorman', Chris Terembes on [www.LiveAuctions.tv](http://www.LiveAuctions.tv)

6:00 PM Prime Rib Meal at Sullivan Farms

7:00 PM Leading the Legacy Junior National Fundraiser Sale

7:30 PM Vegas Night

### SUNDAY, OCTOBER 20th

8:00 AM Complimentary Breakfast at Sullivan Farms

10:00 AM Complimentary refreshments and a beef meal  
Watch Live, candid interviews with Livestock World's  
'The Anchorman', Chris Terembes on [www.LiveAuctions.tv](http://www.LiveAuctions.tv)

12:00 PM Sullivan Farms Maternal Legends Sale  
at the Farm, Dunlap, Iowa

## Sale Day Phones

Sale Barn.....712.643.2126	John Sullivan .....712.263.0263
John Elder.....402.650.1385	Nate Tice .....717.926.0874
James Sullivan .....712.263.9434	Drew Davis .....712.592.9627
Josh Elder .....402.650.1380	Summer Pieper .....712.269.5925
Jesse Hoobler .....330.204.3671	

## Accommodations

SALE HEADQUARTERS, Boulder Inn & Suites, Denison, Iowa.....	712.263.2200
Super 8, Denison, Iowa .....	712.263.5081
Denison Inn, Denison, Iowa .....	712.263.2500
Settle Inn, Harlan, Iowa .....	712.755.2930
Super 8, Missouri Valley, Iowa .....	712.642.4788
Days Inn, Missouri Valley, Iowa .....	712.642.4003
Harrah's Casino & Hotel, Council Bluffs, Iowa .....	712.329.6000

## Trucking & Registration

For trucking assistance, call John Elder, 402.650.1385.

For registration assistance, call Summer Pieper, 712.269.5925

## Air Travel

Omaha, Nebraska : 50 miles Des Moines, Iowa : 120 miles  
Denison, Iowa : 18 miles, 712.263.6392 \*\*Hard surfaced & lighted runway, length 5,000 feet

## Photos & Catalog

Photos by Darla Aegerter and catalog designed by Designs by Arin.

## Maternal Legends & Leading A Legacy On-Line

At [www.LiveAuctions.tv](http://www.LiveAuctions.tv). See page 22 for more information.

## Livestock Representatives

Montie D. Soules, ASA Executive Secretary .....	918.645.4322
Jake Alden, ASA Field Representative .....	402.660.9048
Patrick Wall, ASA Field Representative .....	402.658.4258
Bruce Brooks, Auctioneer .....	580.695.2036
Darryl Rahn, Shorthorn Country .....	217.473.1124
Stuart Wilson, Livestock Insurance .....	217.454.9355
Dwyer Cattle Services .....	Bob, 309.337.1404 & Nick, 309.337.6404
Dr. Roger Hunsley .....	502.468.5714
Kevin Wendt .....	419.566.1599
Scott Harden .....	217.417.8335
Tyler Humphrey .....	419.230.3450
Kent Jaecke .....	405.408.2440
Alan K. Sears .....	970.396.7521
Tom Rooney .....	515.491.6025
Craig Talkington .....	785.623.1789
Joel Edge .....	319.540.1731
Jim Suver .....	402.690.7354
Scott Trennepohl .....	765.620.1700
Brian Kohlstaedt .....	816.716.4614
Cody Lowderman .....	309.313.2171
Monte W. Lowderman .....	309.255.0110
Tom Bigilini .....	417.827.8482
Mark McClintock .....	325.650.4223

## Sullivan Farms Marketing Representative

Josh Elder : 402.650.1380

## Sale Manager's

AGITATER MARKETING : Jeff K. & Darla Aegerter : 402.641.4696  
jaegerter@neb.rr.com : [www.aegertercattle.com](http://www.aegertercattle.com)  
520 South Evergreen Drive, Seward, NE 68434

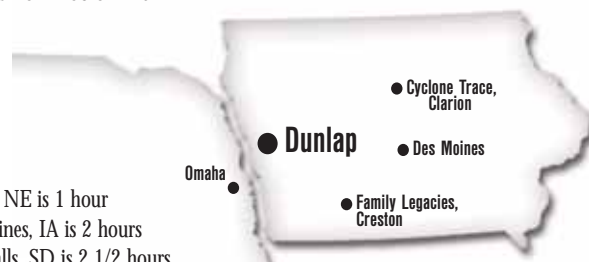
CAGWIN CATTLE SERVICES, INC. : Dr. Don Cagwin, cell 217.341.7552  
Cindy Cagwin-Johnston, 217.452.3056  
PO Box 77, Virginia, IL 62691 : 217.452.3051 : FAX: 217.452.3053  
[cagwincattle@casscomm.com](mailto:cagwincattle@casscomm.com) : [www.cagwincattle.com](http://www.cagwincattle.com)

## Marketing Representative

R&R MARKETING COMPANY : Randy Ratliff  
615.330.2735 : [randy@rrmktg.com](mailto:randy@rrmktg.com) : [www.rrmktg.com](http://www.rrmktg.com)

## Directions to Farm

Sullivan Farms is located on Hwy. 37, 1/4 mile East of Dunlap.  
20 minutes from I-80 or I-29



Omaha, NE is 1 hour  
Des Moines, IA is 2 hours  
Sioux Falls, SD is 2 1/2 hours  
Kansas City, MO is 3 1/2 hours  
Oklahoma City, OK is 7 1/2 hours  
Indianapolis, IN is 9 hours  
Dallas/Fort Worth, TX is 11 1/2 hours



# A Consistent Source of Success at Junior Nationals.

- Grand Champion Female
- Reserve Grand Champion ShorthornPlus Female
- Third Overall Female
- 12 Division Champions
- 11 Class Winners



- Grand Champion Female
- Grand Champion ShorthornPlus Female
- Reserve Grand Champion ShorthornPlus Female
- Fourth Overall Female
- 12 Division Champions
- 15 Class Winners

- Grand Champion Female
- Grand Champion ShorthornPlus Female
- Reserve Grand Champion ShorthornPlus Female
- Third Overall Female
- Fifth Overall Female
- Champion Pair of Females
- 13 Division Champions
- 20 Class Winners



- Reserve Grand Champion Female
- Grand Champion ShorthornPlus Female
- Reserve Grand Champion ShorthornPlus Female
- Grand Champion Cow/Calf Pair
- Reserve Grand Champion Cow/Calf Pair
- 7 Division Champions
- 12 Class Winners

- Reserve Grand Champion Female
- Reserve Grand Champion ShorthornPlus Female
- 7 Division Champions
- 15 Class Winners



- Grand Champion Female
- Reserve Grand Champion Female
- Reserve Grand Champion ShorthornPlus Female
- 7 Division Champions
- 12 Class Winners

- Grand Champion Female
- Reserve Grand Champion Female
- Reserve Grand Champion ShorthornPlus Female
- 5 Division Champions
- 10 Class Winners



- Grand Champion Female
- Grand Champion ShorthornPlus Female
- 4 Division Champions
- 8 Class Winners



# Rose Mary cow family



**SULL Red Rosemary 8050**

2009 National Champion Shorthorn Female  
2009-2010 ASA & AJSA Show Female of the Year  
Shown by the Klug Family



**SULL Rose Mary 636**

2007 National Champion Female  
Supreme Champion Heifer,  
2007 NAILE  
Shown by the O'Sullivan Family



**SULL Roan Rose Mary**

Grand Champion Female, 2011 NAILE Open & Jr Show  
Grand Champion Female, 2011 National Junior Shorthorn Show  
Shown by the O'Sullivan Family



**SULL Master of Rose**

Grand Champion Bull,  
2012 American Royal  
Reserve Grand Champion Bull,  
2013 NWSS



**SULL Very Rose Mary**

Grand Champion Female, 2012 American Royal Open Show



**HD Ruby**

2004 National Champion Female  
Grand Champion Female, 2004 National Junior Heifer Show  
Supreme Champion Shorthorn, 2004 NAILE



1a

**SULL Red Hot Rose 3283 ET \*x**

02.05.13 Heifer LE 3283 Polled Reg. # 4200675

SULL RED BLOOD ET \*x,Red

SULL RED REWARD 9321 7/8 \*x,Red

RL CUMBERLAND 5N35 \*.Roan

SULL ROSE MARY 636-4 ET CL

CF TRUMP X \*x,Roan

NPS DESERT ROSE 004 \*.R/W

Shorthorn • BW: 3.9; WW: 16.5; YW: 30.5; MA: 1.4

- A stunning deep red show heifer prospect with the extra body mass and cow features to set her apart.
- Stemming from one of the most successful cow families in the Shorthorn breed, SULL Rose Mary 636 was herself the 2007 National Champion Female, National Junior Show Champion and Supreme Champion Female Overall Breeds at the NAILE. Her full sisters SULL Red Rose Mary and HD Ruby were National Champions as well. Her full brothers, CF Solution and SULL Right Direction, have been two of the most dominate sires in the Shorthorn breed.



1b

**SULL Rose Mary Blood ET \*x**

03.26.13 Heifer LE 3253 Polled Reg. # 4200307

SULL RED BLOOD ET \*x,Red

SULL RED REWARD 9321 7/8 \*x,Red

RL CUMBERLAND 5N35 \*.Roan

SULL ROSE MARY 636-4 ET CL

CF TRUMP X \*x,Roan

NPS DESERT ROSE 004 \*.R/W

Shorthorn • BW: 3.9; WW: 16.5; YW: 30.5; MA: 1.4

- The color quality and pedigree to command your attention.
- Stemming from one of the most successful cow families in the Shorthorn breed, SULL Rose Mary 636 was herself the 2007 National Champion Female, National Junior Show Champion and Supreme Champion Female Overall Breeds at the NAILE. Her full sisters SULL Red Rose Mary and HD Ruby were National Champions as well. Her full brothers, CF Solution and SULL Right Direction, have been two of the most dominate sires in the Shorthorn breed.



1c

**SULL Lady Rose Mary ET \*x**

03.24.13 Heifer LE 3211 Polled Reg. # 4200815

SULL RED BLOOD ET \*x,Red

SULL RED REWARD 9321 7/8 \*x,Red

RL CUMBERLAND 5N35 \*.Roan

SULL ROSE MARY 636-5 ET CL

CF TRUMP X \*x,Roan

NPS DESERT ROSE 004 \*.R/W

Shorthorn • BW: 3.9; WW: 16.5; YW: 30.5; MA: 1.4

- Extremely complete with the extra pizzazz and strong show ring presence. A lights out show heifer prospect.
- Stemming from one of the most successful cow families in the Shorthorn breed, SULL Rose Mary 636 was herself the 2007 National Champion Female, National Junior Show Champion and Supreme Champion Female Overall Breeds at the NAILE. Her full sisters SULL Red Rose Mary and HD Ruby were National Champions as well. Her full brothers, CF Solution and SULL Right Direction, have been two of the most dominate sires in the Shorthorn breed.







1d

### **SULL Love Rose Mary ET \*x**

02.09.13 Heifer LE 3250 Polled Reg. # 4200305

SULL RED BLOOD ET \*x,Red

SULL RED REWARD 9321 7/8 \*x,Red

RL CUMBERLAND 5N35 \*,Roan

SULL ROSE MARY 636-2 ET CL

CF TRUMP X \*x,Roan

\*x,RAV NPS DESERT ROSE 004 \*,R/W

**Shorthorn** • BW: 3.9; WW: 16.5; YW: 30.5; MA: 1.4

- Red, extremely impressive show heifer with the extra amount of body mass to transfer into the perfect donor female.
- Stemming from one of the most successful cow families in the Shorthorn breed, SULL Rose Mary 636 was herself the 2007 National Champion Female, National Junior Show Champion and Supreme Champion Female Overall Breeds at the NAILE. Her full sisters SULL Red Rose Mary and HD Ruby were National Champions as well. Her full brothers, CF Solution and SULL Right Direction, have been two of the most dominate sires in the Shorthorn breed.



1e

### **SULL Rose Mary Charm ET \*x**

03.07.13 Heifer LE 3231 Polled Reg. # 4200299

SULL RED BLOOD ET \*x,Red

SULL RED REWARD 9321 7/8 \*x,Red

RL CUMBERLAND 5N35 \*,Roan

SULL ROSE MARY 636-2 ET CL

CF TRUMP X \*x,Roan

\*x,RAV NPS DESERT ROSE 004 \*,R/W

**Shorthorn** • BW: 3.9; WW: 16.5; YW: 30.5; MA: 1.4

- Stunning profile and a look at me package of style and color.
- Stemming from one of the most successful cow families in the Shorthorn breed, SULL Rose Mary 636 was herself the 2007 National Champion Female, National Junior Show Champion and Supreme Champion Female Overall Breeds at the NAILE. Her full sisters SULL Red Rose Mary and HD Ruby were National Champions as well. Her full brothers, CF Solution and SULL Right Direction, have been two of the most dominate sires in the Shorthorn breed.



1f

### **SULL Rose Mary Splash ET \*x**

03.26.13 Heifer LE 3237 Polled Reg. # 4200298

SULL RED BLOOD ET \*x,Red

SULL RED REWARD 9321 7/8 \*x,Red

RL CUMBERLAND 5N35 \*,Roan

SULL ROSE MARY 636-4 ET CL

CF TRUMP X \*x,Roan

\*x,RAV NPS DESERT ROSE 004 \*,R/W

**Shorthorn** • BW: 3.9; WW: 16.5; YW: 30.5; MA: 1.4

- A real looker here! Powerfully constructed, but smooth and photogenic in her color and pattern.
- Stemming from one of the most successful cow families in the Shorthorn breed, SULL Rose Mary 636 was herself the 2007 National Champion Female, National Junior Show Champion and Supreme Champion Female Overall Breeds at the NAILE. Her full sisters SULL Red Rose Mary and HD Ruby were National Champions as well. Her full brothers, CF Solution and SULL Right Direction, have been two of the most dominate sires in the Shorthorn breed.



1g

### SULL Rose Mary Rave ET \*x

04.11.13 Heifer LE 3247 Polled Reg. # 4200309

SULL RED BLOOD ET \*x,Red

SULL RED REWARD 9321 7/8 \*x,Red

RL CUMBERLAND 5N35 \*x,Roan

SULL ROSE MARY 636-1 ET CL \*x,R/W

CF TRUMP X \*x,Roan

NPS DESERT ROSE 004 \*x,R/W

Shorthorn • BW: 3.9; WW: 16.5; YW: 30.5; MA: 1.4

- The Red Blood females have been impressive. Especially on the Red Rose Mary's.
- Stemming from one of the most successful cow families in the Shorthorn breed, SULL Rose Mary 636 was herself the 2007 National Champion Female, National Junior Show Champion and Supreme Champion Female Overall Breeds at the NAILE. Her full sisters SULL Red Rose Mary and HD Ruby were National Champions as well. Her full brothers, CF Solution and SULL Right Direction, have been two of the most dominate sires in the Shorthorn breed.



1h

### SULL Roan Rose Mary x

03.18.13 Heifer LE 3257 Polled Reg. # pending

SULL RED REWARD 9321 7/8 \*x,Red

TEGM RED ADVANTAGE 100T 3/4 \*x,Red

MCV MARGIE MILLION 503Q \*x,R/W/M

SULL ROAN ROSE MARY ET \*x,Roan

CF TRUMP X \*x,Roan

SULL ROSE MARY 636 ET \*x,R/W

Shorthorn/MaineTainer • BW: 3.3; WW: 13.5; YW: 26.7; MA: 0.8

- One of the best balanced heifers it the offering. Fault free from end to end.
- A daughter of SULL Roan Rose Mary who is a direct daughter of SULL Rose Mary 636. Roan Rose Mary herself was the 2011 National Junior Show Champion and 2011 NAILE Junior and Open Show Champion. Structural integrity is the strength of this cow family.



1i

### SULL Rose Mary's Reward x

05.14.13 Heifer LE 3978 Polled Reg. # pending

SULL RED REWARD 9321 7/8 \*x,Red

TEGM RED ADVANTAGE 100T 3/4 \*x,Red

MCV MARGIE MILLION 503Q \*x,R/W/M

SULL ROAN ROSE MARY ET \*x,Roan

CF TRUMP X \*x,Roan

SULL ROSE MARY 636 ET \*x,R/W

Shorthorn/MaineTainer • BW: 3.3; WW: 13.5; YW: 26.7; MA: 0.8

- A younger prospect with a soft foot, rib shape and balance to be competitive in the May division.
- A daughter of SULL Roan Rose Mary who is a direct daughter of SULL Rose Mary 636. Roan Rose Mary herself was the 2011 National Junior Show Champion and 2011 NAILE Junior and Open Show Champion. Structural integrity is the strength of this cow family.







**1j**

03.27.13

Heifer

### **SULL Ruby Is Red ET \*x**

LE 3288 Polled Reg. # 4200673

SULL RED BLOOD ET \*x,Red

SULL RED REWARD 9321 7/8 \*x,Red

RL CUMBERLAND 5N35 \*,Roan

HD RUBY 903 ET \*x,R/W/M

CF TRUMP X \*x,Roan

NPS DESERT ROSE 004 \*,R/W

**Shorthorn** • BW: 3.6; WW: 15.9; YW: 29.8; MA: 1.4

- This is one of my favorite females in the entire offering. So big bodied and cowy yet feminine and classy.
- HD Ruby 903 was the National Junior Show Champion and NAILE Champion for the Hahn family. She is also a full sister to SULL Rose Mary 636, SULL Roan Rose Mary, CF Solution and SULL Right Direction.



**1k**

05.03.13

Heifer

### **SULL Blooded Ruby 3278 ET \*x**

LE 3278 Polled Reg. # 4200682

SULL RED BLOOD ET \*x,Red

SULL RED REWARD 9321 7/8 \*x,Red

RL CUMBERLAND 5N35 \*,Roan

HD RUBY 903 ET \*x,R/W/M

CF TRUMP X \*x,Roan

NPS DESERT ROSE 004 \*,R/W

**Shorthorn** • BW: 3.6; WW: 15.9; YW: 29.8; MA: 1.4

- A standout show and brood cow prospect, with the extra amount of body shape and cow features.
- HD Ruby 903 was the National Junior Show Champion and NAILE Champion for the Hahn family. She is also a full sister to SULL Rose Mary 636, SULL Roan Rose Mary, CF Solution and SULL Right Direction.



**1m**

05.27.13

Heifer

### **SULL Traveling Ruby ET \***

LE 3252 Horned Reg. # 4200671

SULL TRAVELER 9807 ET \*,Roan

SULL GNCC ASSET ET \*,R/W

SULL SABLE DELIGHT ET \*x,Red

HD RUBY 903 ET \*x,R/W/M

CF TRUMP X \*x,Roan

NPS DESERT ROSE 004 \*,R/W

**Shorthorn** • BW: 4.2; WW: 18.0; YW: 32.3; MA: 1.0

- Young with the extra balance and structural integrity to be a highly competitive show heifer as she matures. One of my favorites out of the entire sale offering.
- HD Ruby 903 was the National Junior Show Champion and NAILE Champion for the Hahn family. She is also a full sister to SULL Rose Mary 636, SULL Roan Rose Mary, CF Solution and SULL Right Direction.



1n

**SULL Rose Mary Delight ET \*x**

01.10.13 Heifer LE 3186 Polled Reg. # 4200720

CF TRUMP X \*x,Roan

PHILDON CUNIA DIVIDEND 7/8 \*x,R/W

CF CARMELE NG NG 158X \*x,R/W/M

SULL DESERT ROSE 004 ET CL \*x,R/W

NPS DURANGO 774 CBH ET \*x,Roan

NPS DESERT ROSE 833 ET \*x,Red

Shorthorn • BW: 3.9; WW: 19.0; YW: 33.8; MA: 1.2

- There is a lot of value in this female. From the breeding aspect or as a show heifer.
- SULL Roan Mary Delight is a full sister to the greatest lineage in the Shorthorn breed. Full sibs include CF Solution, SULL Right Direction, SULL Roan Rose Mary, SULL Red Rose Mary and HD Ruby.



1p

**SULL Special Rose 3280 ET \*x**

05.07.13 Heifer LE 3280 Polled Reg. # 4200679

SULL RED BLOOD ET \*x,Red

SULL RED REWARD 9321 7/8 \*x,Red

RL CUMBERLAND 5N35 \*x,Roan

SULL DESERT ROSE 004 ET CL \*x,R/W

NPS DURANGO 774 CBH ET \*x,Roan

NPS DESERT ROSE 833 ET \*x,Red

Shorthorn • BW: 3.0; WW: 19.7; YW: 33.3; MA: 2.4

- This is a National Champion contender. The extra power, phenotype and predictable pedigree to excel.
- A maternal sister to breed greats CF Solution, SULL Right Direction, SULL Roan Rose Mary, SULL Red Rose Mary and HD Ruby. It doesn't get any better than this.



## 2014 Junior Nationals

- National Junior **Shorthorn** Show - June 21-27, 2014 - Louisville, KY
- National Junior **Maine-Anjou** Show - June 21-27, 2014 - Louisville, KY
- National Junior **Chianina** Show - June 21-27, 2014 - Louisville, KY
- National Junior **Red Angus** Show - June 17-21, 2014 - Grand Island, NE
- National Junior **Gelbvieh** Show - June 29-July 4 - Sioux Falls, SD
- Junior National **Hereford** Expo - July 5-12, 2014 - Harrisburg, PA
- National Junior **Simmental** Show - July 15-20, 2014 - Louisville, KY
- National Junior **Angus** Show - July 6-12, 2014 - Indianapolis, IN
- National Junior **Charolais** Show - July 6-11, 2014 - Hutchison, KS
- National Junior **Limousin** Show - July 12-28 - Amarillo, TX





1q

### SULL Mary's Master

02.08.12 Bred LE 2132 Polled Reg. # pending

JAKE'S PROUD JAZZ 266L \*x,Roan  
 JSF MASTER OF JAZZ 22U X \*x,R/W/M  
 JSF MISSIE 0214C x,R/W/M  
 CF TRUMP X \*x,Roan  
 SULL ROSE MARY 636 ET \*x,R/W  
 NPS DESERT ROSE 004 \*x,R/W

Shorthorn • BW: 3.9; WW: 20.0; YW: 32.9; MA: 2.3

- Bred to KL Primetime Paymaster; due January 27, 2014.
- Deep, broody, with the classic Rose Mary structural integrity.
- This is a full sister to SULL Master of Rose the Grand Champion Bull at the American Royal, and the Reserve Grand Champion Bull at the 2013 NWSS, who has taken up residential herd sire at Sullivan Farms.



1r

### SULL Rose Mary Lady

02.02.12 Bred LE 2081 Polled Reg. # pending

JAKE'S PROUD JAZZ 266L \*x,Roan  
 JSF MASTER OF JAZZ 22U X \*x,R/W/M  
 JSF MISSIE 0214C x,R/W/M  
 CF TRUMP X \*x,Roan  
 SULL ROSE MARY 636 ET \*x,R/W  
 NPS DESERT ROSE 004 \*x,R/W

Shorthorn • BW: 3.9; WW: 20.0; YW: 32.9; MA: 2.3

- Bred to KL Primetime Paymaster; due February 19, 2014.
- An uncanny resemblance to her full brother SULL Master of Rose. Her mating to Paymaster has proven to work well on this cow line. The last Paymaster son out of Rose Mary was a No Bull Sale feature selling to Cates Farms and syndicate.
- Progressive forward thinking breeders will be searching out these Master of Jazz/Rose Mary daughters.



1s

### SULL Lady Rose Mary

03.24.12 Bred LE 2045 Polled Reg. # pending

JAKE'S PROUD JAZZ 266L \*x,Roan  
 JSF MASTER OF JAZZ 22U X \*x,R/W/M  
 JSF MISSIE 0214C x,R/W/M  
 CF TRUMP X \*x,Roan  
 SULL ROSE MARY 636 ET \*x,R/W  
 NPS DESERT ROSE 004 \*x,R/W

Shorthorn • BW: 3.9; WW: 20.0; YW: 32.9; MA: 2.3

- Bred to KL Primetime Paymaster; due January 27, 2014.
- Extremely broody, functional, highly thought of pedigree and a wise donor cow prospect.
- This is a full sister to SULL Master of Rose the Grand Champion Bull at the American Royal, and the Reserve Grand Champion Bull at the 2013 NWSS, who has taken up residential herd sire at Sullivan Farms.



1t

### SULL Rose Mary 2057 ET \*x

02.28.12 Bred LE 2057 Polled Reg. # 4200703

KL PRIME TIME PAYMASTER x,Red  
KL MELITA ROSEWOOD 696 x,Roan  
CF TRUMP X \*x,Roan  
SULL ROSE MARY 636-1 ET CL \*x,R/W  
NPS DESERT ROSE 004 \*,R/W

Shorthorn • BW: 2.0; WW: 16.5; YW: 27.2; MA: 4.0

- Bred to SULL Payday; due March 1, 2014.
- A nice outcross twist on the top side genetically, backed-up by the breed's most proven cow family on the bottom side in a balanced EPD profile.
- This is a full sib to the highly thought of SULL Pay Attention bull purchased at our March No Bull Sale by Cates Farms and syndicate.



1u

### SULL Roan Rose Mary ET \*x

03.01.12 Bred LE 2040 Polled Reg. # 4200702

KL PRIME TIME PAYMASTER x,Red  
KL MELITA ROSEWOOD 696 x,Roan  
CF TRUMP X \*x,Roan  
SULL ROSE MARY 636 ET \*x,R/W  
NPS DESERT ROSE 004 \*,R/W

Shorthorn • BW: 2.0; WW: 16.5; YW: 27.2; MA: 4.0

- Bred to SULL Payday; due February 19, 2014.
- A powerfully constructed Paymaster daughter with a lot of opportunity in her outcross pedigree to be mated any direction you desire.
- This is a full sib to the highly thought of SULL Pay Attention bull purchased at our March No Bull Sale by Cates Farms and syndicate.



1v

### SULL Rose Mary 1490 ET \*x

09.16.11 Bred LE 1490 Polled Reg. # 4200699

SULL RIGHT DIRECTION ET \*x,R/W  
CF TRUMP X \*x,Roan  
NPS DESERT ROSE 004 \*,R/W  
SULL ROSE MARY 636-3 ET \*x,R/W  
CF TRUMP X \*x,Roan  
NPS DESERT ROSE 004 \*,R/W

Shorthorn • BW: 4.9; WW: 19.1; YW: 33.9; MA: 0.6

- Bred to KL Primetime Paymaster; due November 19, 2013.
- Well bred big bodied with a quick payday to calve soon to KL Primetime Paymaster.
- SULL Rose Mary 1490 is a daughter of SULL Rose Mary 636 and a full sister to SULL Very Rose Mary the Grand Champion Female at the 2012 American Royal and Division Champion at NWSS.





# Myrtle Bo cow family



**CF Myrtle Bo 46 TPX \*x**



**SULL Miss Myrtle Beau**

Grand Champion Female, 2011 NWSS Open & Jr Show  
Grand Champion Female, 2010 American Royal Open Show  
Owned by the Moore Family

**SULL Bo's Traveling**

Third Overall Champion Female, 2013 National Junior Shorthorn Show  
Reserve Grand Champion Bred & Owned Female,  
2013 National Junior Shorthorn Show



**SULL Sage's Bo 1140**

Division Champion,  
2012 National Junior  
Shorthorn Show  
Owned by the Aegerter Family



**SULL Fancy Pants Bo**

Grand Champion Female, 2012 Colorado State Fair  
Owned by the Reid Family

**SULL Mystic Myrtle 0504**

Reserve Grand Champion Female,  
2012 NWSS  
Owned by Rockin' G  
Land & Cattle





**2a****SULL Myrtle's Rock ET \*x**

04.06.12 Bred LE 2285 Polled Reg. # 4200509

SULL RED ROCK 9351 ET 7/8 \*x,Red  
 TEGM RED ADVANTAGE 100T 3/4 \*x,Red  
 JSF PRINCESS 0441E x,Red  
 CF TRUMP X \*x,Roan  
 CF MYRTLE BO 46 TP X ET \*x,R/W/M  
 GF MISS MYRTLE BO 305 ET \*x,R/W

Shorthorn/MaineTainer • BW: 2.5; WW: 14.1; YW: 27.0; MA: 1.0

- Bred to SULL Payday; due January 27, 2014.
- One of the best bred heifers that we have ever offered. Take a strong look at this future breed leading donor cow prospect. Her outcross pedigree enables you to use any of the popular bulls of today. It's a rare opportunity when you find one built like this out of a cow like 46P and the mating options that are before you.

**2b****SULL Myrtle's Rockin ET \*x**

05.01.12 Bred LE 2286 Polled Reg. # 4200717

SULL RED ROCK 9351 ET 7/8 \*x,Red  
 TEGM RED ADVANTAGE 100T 3/4 \*x,Red  
 JSF PRINCESS 0441E x,Red  
 CF TRUMP X \*x,Roan  
 CF MYRTLE BO 46 TP X ET \*x,R/W/M  
 GF MISS MYRTLE BO 305 ET \*x,R/W

Shorthorn • BW: 2.5; WW: 14.1; YW: 27.0; MA: 1.0

- Bred to SULL Payday; due January 27, 2014.
- Tremendous upside with this young bred heifer. Not only is she phenotypically made correct and out of the proven 46P cow she possesses the ability to stick AI on her first service to calve at 21 months.
- Payday should work well on these Red Rock daughters.

**2c****SULL Right Myrtle Bo ET \*x**

09.09.11 Bred LE 1485 Polled Reg. # 4200698

SULL RIGHT DIRECTION ET \*x,R/W  
 CF TRUMP X \*x,Roan  
 NPS DESERT ROSE 004 \*x,R/W  
 CF TRUMP X \*x,Roan  
 SULL MYRTLE BO 46P-1 \*x,R/W  
 GF MISS MYRTLE BO 305 ET \*x,R/W

Shorthorn • BW: 4.3; WW: 17.3; YW: 31.2; MA: 1.6

- Bred to KL Primetime Paymaster; due November 19, 2013.
- The genetic predictability of Right Direction x 46P is priceless and proven. This powerful brood cow prospect is going to calve soon to the popular Paymaster bull. You will appreciate the foot shape and maternal characteristics of this female.







2d

### SULL Presents Bo 2118 ET \*x

03.03.12 Bred LE 2118 Polled Reg. # 4190122

SULL GNCC GREY GOOSE ET \*x, Roan  
 K-KIM MONA LISA 35L ET \*x, White  
 CF MYRTLE BO 46 TPX ET \*x, R/W/M  
 CF TRUMPX \*x, Roan  
 GF MISS MYRTLE BO 305 ET \*x, R/W

Shorthorn • BW: 3.8; WW: 19.0; YW: 33.3; MA: 2.9

- Bred to KL Primetime Paymaster; due February 20, 2014.
- Classic designed Myrtle Bo female.
- Her full sister was Supreme Champion 2010 MN State Fair and Division Champion at NWSS. Her maternal sister was a two-time Champion NWSS Female SULL Miss Myrtle Beau for the Moore family. Predictable results in the pasture or ring.



2e

### SULL Bold Myrtle Bo ET \*x

01.05.12 Bred LE 2151 Polled Reg. # 4200710

HILL HAVEN BOLD 4X x, Red  
 DF GOLD EAGLE 0019 \*x, Red  
 MCQUEEN-VUE'S HAPPY GO LUCKY x, Red  
 CF MYRTLE BO 47 TPX ET \*x, Roan  
 CF TRUMPX \*x, Roan  
 GF MISS MYRTLE BO 305 ET \*x, R/W

Shorthorn • BW: 3.0; WW: 14.0; YW: 21.6; MA: 3.2

- Bred to SULL Payday; due February 19, 2014.
- Brood cow deluxe in a deep red meat machine package.
- Hill Haven Bold was brought into our program from Canada to add out-cross genetics in a dark red broody sound package. SULL Bold Myrtle Bo is the daughter of CF Myrtle Bo 47 the past NWSS Champion and full sister to 46P.



2f

### SULL Myrtle Bo 2053 ET \*x

02.06.12 Bred LE 2053 Polled Reg. # 4200719

HI VIEWS ACE OF DIAMONDS \*x, Roan  
 WERNACRES ACE HIGH 620 \*x, Roan  
 HI-VIEW 2ND ZELDA \*x, Red  
 SULL MYRTLE BO 46P-1 \*x, R/W  
 CF TRUMPX \*x, Roan  
 GF MISS MYRTLE BO 305 ET \*x, R/W

Shorthorn • BW: 3.6; WW: 12.5; YW: 26.4; MA: 2.2

- Bred to SULL Payday; due January 27, 2014.
- Quite the breeding piece here.
- This is a full sister to Hannah Moore's two-time NWSS Champion SULL Miss Myrtle Beau. The genetic merger of Ace of Diamonds on 46P provides proven genetics in a bit of an outcross pedigree. This will be beneficial in mating this female for future generations to the popular bulls in our breed.



2g

02.27.13

Heifer

**SULL Red Bo 3273 ET \***

LE 3273

Horned

Reg. # 4200320

SULL GNCC ASSET ET \*,R/W

CF SOLUTION X ET \*,R/W/M

K-KIM MONA LISA 35L ET \*,White

CF MYRTLE BO 46 TP X ET \*,R/W/M

CF TRUMP X \*,Roan

GF MISS MYRTLE BO 305 ET \*,R/W

Shorthorn • BW: 3.4; WW: 17.0; YW: 31.3; MA: 2.9

- Show heifer alert! Possessing the extra substance with smoothness to be competitive at the strongest shows.
- 46P has been one of the most consistent females in the Shorthorn breed in producing high quality champions. At the 2012 NWSS her daughter was named Reserve Champion for Rockin' G. At the 2011 NWSS her daughter was Champion in the Junior and Open Show for Hannah Moore and the Third Overall Female at this year's National Junior Show was yet another 46P daughter.



2h

02.13.13

Heifer

**SULL Beautiful Bo 3196 ET \*x**

LE 3196

Polled

Reg. # 4200294

SULL GNCC ASSET ET \*,R/W

CF SOLUTION X ET \*,R/W/M

K-KIM MONA LISA 35L ET \*,White

SULL MYRTLE BO 46P-1 \*,R/W

CF TRUMP X \*,Roan

GF MISS MYRTLE BO 305 ET \*,R/W

Shorthorn • BW: 3.8; WW: 17.8; YW: 31.9; MA: 2.9

- I have a lot of faith in this female as a strong breeding piece in the pasture or the show ring. She resembles her dam quite strongly.
- 46P has been one of the most consistent females in the Shorthorn breed in producing high quality champions. At the 2012 NWSS her daughter was named Reserve Champion for Rockin' G. At the 2011 NWSS her daughter was Champion in the Junior and Open Show for Hannah Moore and the Third Overall Female at this year's National Junior Show was yet another 46P daughter.



2i

05.06.13

Heifer

**SULL Mollie Jo 3209**

LE 3209

Polled

Reg. # pending

SULL RED REWARD 9321 7/8 \*,Red

TEGM RED ADVANTAGE 100T 3/4 \*,Red

MCV MARGIE MILLION 503Q \*,R/W/M

MISS V8 MOLLIE JO 93S2 ET \*,R/W/M

SR RED RIDERS DRIVE \*,Red

CF MYRTLE BO 93 TP X ET \*,Roan

Shorthorn/MaineTainer • BW: 3.0; WW: 16.8; YW: 31.5; MA: 3.7

- A very stylish Red Reward female with the extra class and championship pedigree to succeed.
- This is the first genetic merger of Red Reward on Miss V8 Mollie Jo. One of the winningest females in the Shorthorn breed. Study this heifer's pedigree and potential.





# Lady Crystal cow family



## SULL Crystal's Lucy

Grand Champion Female,  
2012 National Junior Shorthorn Show  
Grand Champion Female,  
2012 NWSS Jr Show



## SULL Crystal's Tootie

Grand Champion Female, 2013 Iowa State Fair  
Division Champion, 2013 National Junior Shorthorn Show



## SULL Dream Big 1126

Grand Champion Female, 2013 NWSS Open & Jr Show  
2012 Reserve National Champion Female  
Reserve Grand Champion Female,  
2012 NAILE Open Show  
Owned by the O'Sullivan Family



## SULL Crystal Love 2023

Supreme Champion Female,  
2013 Minnesota State Fair 4-H Show  
Owned by the O'Sullivan Family



## SULL Crystal Judy

Grand Champion Bred & Owned Female, 2012 National Junior Shorthorn Show  
Grand Champion Female, 2012 Iowa State Fair P.A.C.E. Show

## Sherwood Lady Crystal





**3a**

02.07.13 Heifer LE 3266 Polled Reg. # 4200295

**SULL Crystal's First ET \*x**

SULL RIGHT DIRECTION ET \*x,R/W  
 CF TRUMP X \*x,Roan  
 NPS DESERT ROSE 004 \*x,R/W  
 WHR SONNY 8114 ET \*x,Roan  
 SULL LADY CRYSTAL -2 ET CL \*x,Roan  
 AF MARGIES DREAM LADY 05 ET \*x,Roan

Shorthorn • BW: 4.2; WW: 18.0; YW: 30.6; MA: -1.7

- Incredible show prospect from a cow family that has produced as many champions in the last two years as any in the Shorthorn breed. Note this heifer has one ear that sets a bit lower since she was a few months old.
- Her dam Lady Crystal in the last two years has produced the 2012 National Junior Show Champion Female, 2013 Iowa State Fair Champion Female, 2013 Minnesota State Fair Supreme Champion Female, 2012 National Junior Heifer Show Grand and Reserve Champion Female and her maternal sister was the 2013 Grand Champion Female at the NWSS Junior and Open Show. A proven blood line that gets better with age.

**3b**

04.02.13 Heifer LE 3249 Polled Reg. # 4200319

**SULL Crystal's Love ET \*x**

SULL RIGHT DIRECTION ET \*x,R/W  
 CF TRUMP X \*x,Roan  
 NPS DESERT ROSE 004 \*x,R/W  
 WHR SONNY 8114 ET \*x,Roan  
 SULL LADY CRYSTAL -2 ET CL \*x,Roan  
 AF MARGIES DREAM LADY 05 ET \*x,Roan

Shorthorn • BW: 4.2; WW: 18.0; YW: 30.6; MA: -1.7

- You have to admire the similarities of this heifer's attractiveness and power packed combination, much like her champion full siblings.
- Her dam Lady Crystal in the last two years has produced the 2012 National Junior Show Champion Female, 2013 Iowa State Fair Champion Female, 2013 Minnesota State Fair Supreme Champion Female, 2012 National Junior Heifer Show Grand and Reserve Champion Female and her maternal sister was the 2013 Grand Champion Female at the NWSS Junior and Open Show. A proven blood line that gets better with age.

**3c**

02.23.13 Heifer LE 3267 Horned Reg. # 4200321

**SULL Sassy Crystal ET \***

SULL RIGHT DIRECTION ET \*x,R/W  
 CF TRUMP X \*x,Roan  
 NPS DESERT ROSE 004 \*x,R/W  
 WHR SONNY 8114 ET \*x,Roan  
 SHERWOOD LADY CRYSTAL ET \*x,White  
 AF MARGIES DREAM LADY 05 ET \*x,Roan

Shorthorn • BW: 4.1; WW: 17.9; YW: 30.5; MA: +1.7

- Potentially one of the best show heifer prospects in the entire offering. Fault free from all angles.
- Her dam Lady Crystal in the last two years has produced the 2012 National Junior Show Champion Female, 2013 Iowa State Fair Champion Female, 2013 Minnesota State Fair Supreme Champion Female, 2012 National Junior Heifer Show Grand and Reserve Champion Female and her maternal sister was the 2013 Grand Champion Female at the NWSS Junior and Open Show. A proven blood line that gets better with age.







3d

**SULL Neat Crystal 3983 ET \*x**

06.14.13 Heifer LE 3983 Polled Reg. # 4200676

WHR SONNY 8114 ET \*x, Roan  
 LITTLE CEDAR AVIATOR 503X \*x, Red  
 NPS ROSES RIDER 031 ET \*x, R/W/M

WHR SONNY 8114 ET \*x, Roan  
 SULL LADY CRYSTAL 434P-1 ET \*x, White  
 AF MARGIES DREAM LADY 05 ET \*x, Roan

Shorthorn • BW: 3.7; WW: 20.4; YW: 33.7; MA: -1.3

- Youngest heifer in the sale. Genetically and phenotypically you can see the potential she possesses. A full sister to SULL Crystal's Lucy.
- Her dam Lady Crystal in the last two years has produced the 2012 National Junior Show Champion Female, 2013 Iowa State Fair Champion Female, 2013 Minnesota State Fair Supreme Champion Female, 2012 National Junior Heifer Show Grand and Reserve Champion Female and her maternal sister was the 2013 Grand Champion Female at the NWSS Junior and Open Show. A proven blood line that gets better with age.



3e

**SULL Crystal's Aviator ET \*x**

05.18.13 Heifer LE 3980 Polled Reg. # 4200680

WHR SONNY 8114 ET \*x, Roan  
 LITTLE CEDAR AVIATOR 503X \*x, Red  
 NPS ROSES RIDER 031 ET \*x, R/W/M

WHR SONNY 8114 ET \*x, Roan  
 SULL LADY CRYSTAL 434P-1 ET \*x, White  
 AF MARGIES DREAM LADY 05 ET \*x, Roan

Shorthorn • BW: 3.7; WW: 20.4; YW: 33.7; MA: -1.3

- Strongly resembles her full sister SULL Crystal's Lucy at this age. SULL Crystal's Lucy was the 2012 National Junior Heifer Show Champion.
- Her dam Lady Crystal in the last two years has produced the 2012 National Junior Show Champion Female, 2013 Iowa State Fair Champion Female, 2013 Minnesota State Fair Supreme Champion Female, 2012 National Junior Heifer Show Grand and Reserve Champion Female and her maternal sister was the 2013 Grand Champion Female at the NWSS Junior and Open Show. A proven blood line that gets better with age.



3f

**SULL Traveling Dream ET \***

02.11.13 Heifer LE 3185 Horned Reg. # 4200304

SULL GNCC ASSET ET \*, R/W  
 SULL TRAVELER 9807 ET \*, Roan  
 SULL SABLE DELIGHT ET \*x, Red

CCC GOLD RUSH \*x, Red  
 SS DREAM LADY 424 ET \*x, Red  
 AF MARGIES DREAM LADY 05 ET \*x, Roan

Shorthorn • BW: 3.4; WW: 17.9; YW: 28.6; MA: 2.1

- A powerfully constructed prospect here. Study and analyze her foot structure and tremendous body capacity.
- 424 is the dam of Sammi Schrag's Reserve Champion Female at NWSS 2103 and NAILE 2012. The Traveler daughters have been quite successful in his first calf crop at Junior Nationals and Iowa State Fair.



3g

03.19.13

Heifer

**SULL Clean Crystal ET \*x**

LE 3229 Polled Reg. # 4200301

SULL RED BLOOD ET \*x,Red

SULL RED REWARD 9321 7/8 \*x,Red

RL CUMBERLAND 5N35 \*x,Roan

SULL LADY CRYSTAL-2 ET CL

WHR SONNY 8114 ET \*x,Roan

AF MARGIES DREAM LADY 05 ET \*x,Roan

Shorthorn • BW: 3.2; WW: 15.4; YW: 27.2; MA: -0.9

- A replica to her famous dam. All the style and completeness to be a major contender.
- Her dam Lady Crystal in the last two years has produced the 2012 National Junior Show Champion Female, 2013 Iowa State Fair Champion Female, 2013 Minnesota State Fair Supreme Champion Female, 2012 National Junior Heifer Show Grand and Reserve Champion Female and her maternal sister was the 2013 Grand Champion Female at the NWSS Junior and Open Show. A proven blood line that gets better with age.



3h

04.19.13

Heifer

**SULL Cool Crystal 3286 ET \*x**

LE 3286 Polled Reg. # 4200297

SULL RED BLOOD ET \*x,Red

SULL RED REWARD 9321 7/8 \*x,Red

RL CUMBERLAND 5N35 \*x,Roan

SULL LADY CRYSTAL-434P-1 ET

WHR SONNY 8114 ET \*x,Roan

AF MARGIES DREAM LADY 05 ET \*x,Roan

Shorthorn • BW: 3.2; WW: 15.4; YW: 27.2; MA: -0.9

- SULL Red Blood in his first calf crop has done an amazing job here. Heifers like this are why we are so happy with them.
- Her dam Lady Crystal in the last two years has produced the 2012 National Junior Show Champion Female, 2013 Iowa State Fair Champion Female, 2013 Minnesota State Fair Supreme Champion Female, 2012 National Junior Heifer Show Grand and Reserve Champion Female and her maternal sister was the 2013 Grand Champion Female at the NWSS Junior and Open Show. A proven blood line that gets better with age.



3i

05.17.13

Heifer

**SULL Crystal Clear ET \*x**

LE 3279 Polled Reg. # 4200308

SULL RED BLOOD ET \*x,Red

SULL RED REWARD 9321 7/8 \*x,Red

RL CUMBERLAND 5N35 \*x,Roan

SULL LADY CRYSTAL-434P-1 ET

WHR SONNY 8114 ET \*x,Roan

AF MARGIES DREAM LADY 05 ET \*x,Roan

Shorthorn • BW: 3.2; WW: 15.4; YW: 27.2; MA: -0.9

- Red Blood x Lady Crystal strikes again! Powerfully constructed made prospect.
- Her dam Lady Crystal in the last two years has produced the 2012 National Junior Show Champion Female, 2013 Iowa State Fair Champion Female, 2013 Minnesota State Fair Supreme Champion Female, 2012 National Junior Heifer Show Grand and Reserve Champion Female and her maternal sister was the 2013 Grand Champion Female at the NWSS Junior and Open Show. A proven blood line that gets better with age.







3j

04.09.13

Heifer

LE 3239

Polled

Reg. # 4200303

### **SULL Crystal's Blood ET \*x**

SULL RED BLOOD ET \*x,Red

SULL RED REWARD 9321 7/8 \*x,Red

RL CUMBERLAND 5N35 \*x,Roan

WHR SONNY 8n4 ET \*x,Roan

SHERWOOD LADY CRYSTAL ET \*x,White

AF MARGIES DREAM LADY 05 ET \*x,Roan

Shorthorn • BW: 3.1; WW: 15.3; YW: 27.0; MA: -0.9

- You have to admire the structure and mass with a smooth package that this heifer possesses. Lots of upside here. Note: This heifer has one bad eye.
- Her dam Lady Crystal in the last two years has produced the 2012 National Junior Show Champion Female, 2013 Iowa State Fair Champion Female, 2013 Minnesota State Fair Supreme Champion Female, 2012 National Junior Heifer Show Grand and Reserve Champion Female and her maternal sister was the 2013 Grand Champion Female at the NWSS Junior and Open Show. A proven blood line that gets better with age.



3k

01.10.12

Bred

LE 2188

Polled

Reg. # 4200715

### **SULL Dream Lady 2188 ET \*x**

SULL RED REWARD 9321 7/8 \*x,Red

TEGM RED ADVANTAGE 100T 3/4 \*x,Red

MCV MARGIE MILLION 503Q \*x,R/W/M

CF TRUMP X \*x,Roan

SULL DREAM LADY 7067 ET \*x,Roan

AF MARGIES DREAM LADY 05 ET \*x,Roan

Shorthorn • BW: 2.7; WW: 13.7; YW: 25.1; MA: 0.4

- Bred to KL Primetime Paymaster; due February 19, 2014.
- Completeness depth of body and the perfect Shorthorn maternal looking package.
- We are looking forward to watching this Red Reward x Dream Lady develop as a brood cow. Again, her pedigree will offer you multiple options to breed too many of today's popular young bulls.

**Place your bid for both the Maternal Legends and Leading A Legacy Sales on-line at ...**

LIVE ON THE INTERNET. LIVE AUDIO. LIVE VIDEO. BIDDING

**LiveAuctions.**

<http://www.LiveAuctions.tv> - Call Brad Fahrmeier for Details - 816.392.9241



To register and follow the auction in real time on the internet, log on to Website - [www.liveauctions.tv](http://www.liveauctions.tv)

For More Information, call Brad Fahrmeier at (816) 392-9241

If you wish to follow the sale on the computer and bid by telephone, please call the sale day phone numbers or one of the consultants listed in our catalog.

Also on [www.LiveAuctions.tv](http://www.LiveAuctions.tv) be sure to watch, LIVE, candid interviews with Livestock World's 'The Anchorman', Chris Terembes at 4:00 p.m., Saturday, October 19th and Sunday, October 20th at 10:00 a.m.



Videos of sale cattle on-line  
October 5th at  
[www.youtube.com/SullivanShorthorn](http://www.youtube.com/SullivanShorthorn)



# Sweet Heat cow family



## KWR Miss Sweet Heat 414S

Supreme Champion Female, Iowa State Fair 4-H Show  
Supreme Champion Female, Ak-Sar-Ben Livestock Expo

4a

04.07.13 Heifer LE 3181 Polled Reg. # ar58213

## SULL Miss Sweetie Pie \*x

SULL RIGHT DIRECTION ET

CF TRUMP X \*x, Roan  
\*x, RWM  
NPS DESERT ROSE 004 \*, RWM

KWR MISS SWEET HEAT 414S

HEAT WAVE 1CM  
RCC MISS 414D

ShorthornPlus

- Big time! This heifer has a striking and sharp look to her in a complete fault free package. thc
- Her dam Miss Sweet Heat 414S was the Supreme Champion Female at the Iowa State Fair and Ak-Sar-Ben for Nick Sullivan. She has equated her smoothness and completeness to her progeny.



4b

03.14.13 Heifer LE 3024 Polled Reg. # ar58212

## SULL Miss Direct Me \*x

SULL RIGHT DIRECTION ET

CF TRUMP X \*x, Roan  
\*x, RWM  
NPS DESERT ROSE 004 \*, RWM

KWR MISS SWEET HEAT 414S

HEAT WAVE 1CM  
RCC MISS 414D

ShorthornPlus

- Consistency, consistency, consistency! Two full sisters in 4A and 4B that have tremendous potential. You tell me which one you like best. th pending
- Her dam Miss Sweet Heat 414S was the Supreme Champion Female at the Iowa State Fair and Ak-Sar-Ben for Nick Sullivan. She has equated her smoothness and completeness to her progeny.



Videos of sale cattle on-line October 5th at [www.youtube.com/SullivanShorthorn](http://www.youtube.com/SullivanShorthorn)



# Cherri cow family



**SULL Cherri Solution**

**DJS Cherri**



**SULL Cherri One 8191**

Division Champion, NAILE & NWSS  
Owned by the Humphrey Family



**SULL Cherri Mary Lou**

Grand Champion Female, 2013 National Junior Shorthorn Show



**5a**

## **SULL Cherri's Traveling ET \*x**

05.14.13 Heifer LE 3242 Polled Reg. # 4200816

SULL TRAVELER 9807 ET \*x, Roan  
SULL GNCC ASSET ET \*x, R/W  
SULL SABLE DELIGHT ET \*x, Red  
CF SOLUTION X ET \*x, R/W/M  
SULL A CHERRI SOLUTION ET \*x, R/W  
DJS CHERRI 205 \*x, Red

**Shorthorn** • BW: 4.0; WW: 16.6; YW: 29.3; MA: 0.5

- A fault free very feminine May prospect with the capacity and femininity of a striking female.
- Cherri's Travelings dam, SULL Cherri Solution, was a division winner at NAILE, NWSS and Champion at several of the major expos and winter jackpot shows. In her initial mating to Traveler she has out done herself.



**5b****SULL Cherri Class 3232 ET \*x**

04.19.13 Heifer LE 3232 Polled Reg. # 4200672

SULL TRAVELER 9807 ET \*x, Roan  
 SULL GNCC ASSET ET \*x, R/W  
 SULL SABLE DELIGHT ET \*x, Red  
 CF SOLUTION X ET \*x, R/W/M  
 SULL A CHERRI SOLUTION ET \*x, R/W  
 DJS CHERRI 205 \*x, Red

Shorthorn • BW: 4.0; WW: 16.6; YW: 29.3; MA: 0.5

- It is certainly rewarding to raise a heifer of this quality. One of the best prospects to sell this year. Smoothness, completeness and genetic predictability. the
- 3232's dam, SULL Cherri Solution, was a Division Winner at NAILE, NWSS and Champion at several of the major expos and winter jackpot shows. In her initial mating to Traveler she has out done herself.

**5c****SULL Traveling Cherri ET \*x**

05.23.13 Heifer LE 3982 Polled Reg. # 4200677

SULL TRAVELER 9807 ET \*x, Roan  
 SULL GNCC ASSET ET \*x, R/W  
 SULL SABLE DELIGHT ET \*x, Red  
 CF SOLUTION X ET \*x, R/W/M  
 SULL A CHERRI SOLUTION ET \*x, R/W  
 DJS CHERRI 205 \*x, Red

Shorthorn • BW: 4.0; WW: 16.6; YW: 29.3; MA: 0.5

- The Traveler sired cattle have created a lot of positive talk in his first calf crop. Champions at the Nationals Junior Heifer Show, both the pure-bred and ShorthornPlus shows, and the Iowa State Fair has proven he replicated himself.
- Traveling Cherri's dam, SULL Cherri Solution, was a Division Winner at NAILE, NWSS and Champion at several of the major expos and winter jackpot shows. In her initial mating to Traveler she has out done herself.

**5d****SULL Cherri Desire ET \*x**

05.22.13 Heifer LE 3979 Polled Reg. # 4200681

SULL RIGHT DIRECTION ET \*x, R/W  
 CF TRUMP X \*x, Roan  
 NPS DESERT ROSE 004 \*x, R/W  
 WHR SONNY 8114 ET \*x, Roan  
 SULL CHERRI 2055 ET \*x, Red  
 MCKEE'S ASL CHERRI 742 x, Red

Shorthorn • BW: 3.6; WW: 14.4; YW: 24.8; MA: 07

- Young, green and full of potential. Study this heifer's confirmation foot size and angularity.
- This is a full sib to the 2010 National Junior Heifer Show Champion Female, SULL Cherri Mary Lou. Predictable results from the dominate Cherri 205 cow.







5e

**SULL Cherri Soda 2062 ET \*x**

01.04.12 Bred LE 2062 Polled Reg. # 4200472

SULL PRIMETIME ET \*x,Roan

CF SOLUTION X ET \*x,R/W/M

K-KIM MP MONA LISA 34P \*x,White

SULL CHERRI 205-7 ET CL \*x,Red

WHR SONNY 8114 ET \*x,Roan

MCKEE'S ASL CHERRI 742 x,Red

Shorthorn • BW: 4.6; WW: 16.4; YW: 26.9; MA: 1.0

- Bred to SULL Payday; due January 27, 2014.
- From production and a show standpoint this bloodline is powerful.
- This red beastly daughter of Cherri 205 has what it takes in mass, genetics and completeness. Her mating to Payday should pay dividends.



5f

**SULL Prime Cherri 2169 ET \***

01.14.12 Bred LE 2169 Horned Reg. # 4200479

SULL PRIMETIME ET \*x,Roan

CF SOLUTION X ET \*x,R/W/M

K-KIM MP MONA LISA 34P \*x,White

SULL CHERRI 205-7 ET CL \*x,Red

WHR SONNY 8114 ET \*x,Roan

MCKEE'S ASL CHERRI 742 x,Red

Shorthorn • BW: 4.6; WW: 16.4; YW: 26.9; MA: 1.0

- Bred to SULL Payday; due March 6, 2014.
- Tremendous smoothness and correctness of lines, with the same phenotype of her tremendous dam. We are excited about the Payday mating back on the Primetime x Cherri daughters.



5g

**SULL Cherri Lady 2054 ET \*x**

01.30.12 Bred LE 2054 Polled Reg. # 4200470

SULL PRIMETIME ET \*x,Roan

CF SOLUTION X ET \*x,R/W/M

K-KIM MP MONA LISA 34P \*x,White

SULL CHERRI 205-3 ET \*x,Red

WHR SONNY 8114 ET \*x,Roan

MCKEE'S ASL CHERRI 742 x,Red

Shorthorn • BW: 4.6; WW: 16.4; YW: 26.9; MA: 1.0

- Bred to SULL Payday; due February 19, 2014.
- Bred to have a quick return on your investment. The SULL Payday bull has done an outstanding job here at Sullivan Farms. Expect SULL Cherry Lady 2054 to have a tremendous udder.
- Primetime's Dam 34P and Cherri herself both possess a strong supply of milk and perfectly shaped udder.



# Glamour Girl cow family



## CYT Solution's Girl 9114

Division Champion, 2009 NAILE Open Show



6a

03.22.13 Heifer LE 3287 Polled Reg. # 4200318

## SULL Glamour Blood ET \*x

SULL RED BLOOD ET \*x,Red

SULL RED REWARD 9321 7/8 \*x,Red

RL CUMBERLAND 5N35 \*x,Roan

CYT SOLUTION GIRL 9114 ET \*x,Roan

CF SOLUTION X ET \*x,R/W/M

JA SONNY GIRL 1J40 ET \*x,White

Shorthorn • BW: 3.4; WW: 15.9; YW: 30.1; MA: 0.1

- Flashy, sharp featured Red Blood daughter. Red Blood has sure done a tremendous job in his first calf crop here.
- CYT Solution Girl is primed to be one of our future top donor cows at Sullivan Farms. She herself was a CYT sale topper and Division Champion at the 2009 NAILE. Her foot size and structural integrity with body dimension is unmatched. This is her initial offering of ET calves.



6b

03.09.13 Heifer LE 3276 Polled Reg. # 4200683

## SULL Glamour Blood ET \*x

SULL RED BLOOD ET \*x,Red

SULL RED REWARD 9321 7/8 \*x,Red

RL CUMBERLAND 5N35 \*x,Roan

CYT SOLUTION GIRL 9114 ET \*x,Roan

CF SOLUTION X ET \*x,R/W/M

JA SONNY GIRL 1J40 ET \*x,White

Shorthorn • BW: 3.4; WW: 15.9; YW: 30.1; MA: 0.1

- Fantastic blood red combination cow and show prospect. The modern design and future of the Shorthorn breed.
- CYT Solution Girl is primed to be one of our future top donor cows at Sullivan Farms. She herself was a CYT sale topper and Division Champion at the 2009 NAILE. Her foot size and structural integrity with body dimension is unmatched. This is her initial offering of ET calves.





# SULL Success at All Price Points.



*Congratulations Sara Pieper*  
Champion Shorthorn Female, '13  
Illinois State Fair Open Jackpot Show



*Congratulations Rachelle Clark*  
Champion Shorthorn, '13 Pennsylvania  
Farm Show; and many-time  
Champion Female



*Congratulations*  
*Kylie Cagwin*  
Reserve Champion Shorthorn  
Female, James Flach Memorial  
Day Show



*Congratulations Landon Bolin*  
2013 High Point Shorthorn Female,  
Arkansas Junior Cattleman's Assoc.  
13 Time Champion Shorthorn



*Congratulations Mitchell Nissen*  
Champion AOB Female, '13 Nebraska State Fair



*Congratulations Mya Lenke*  
Supreme Champion Female, Sandusky Open & Junior Show;  
Division Champion, '13 Ohio State Fair; and Division  
Champion, '13 Michigan Beef Expo



*Congratulations Renee Lock*  
Division Champion, '13 Illinois State  
Fair Open Show; and Division Reserve  
Champion, '13 National Junior  
Shorhtorn Show



*Congratulations*  
*Carson Hank*  
Reserve  
Champion  
ShorthornPlus  
Heifer, '13  
Illinois Beef Expo



*Congratulations Konner Kirkpatrick*  
Reserve Champion ShorthornPlus Female,  
'13 Indiana State Fair Open & Jr Show; Reserve  
Champion ShorthornPlus Female, Scarlet & Grey;  
and many-time Champion ShorthornPlus Female.



*Congratulations Stetson Klise*  
Many-time Champion Female including  
Missouri AGR & MU Block & Bridle



*Congratulations Abby Lashmett*  
Reserve  
Champion  
ShorthornPlus  
Female, '13  
Illinois State Fair  
Jr Show



*Congratulations Mackenzie White*  
Champion Shorthorn Female,  
Big East Prospect Show



*Congratulations to the Moore Family*  
Grand Champion Heifer, Ring B, '13 Scarlet & Gray



*Congratulations Haley Becking*  
Grand Champion Overall Breeding Heifer,  
Watertown Winter Farm Show; and Reserve  
Champion Shorthorn Female, '13 SD Spotlight



*Congratulations Jordan Hatcher*  
Champion Shorthorn Female, Jackson  
Open Show; and Div Champ, '13  
Indiana State Fair Open P.A.C.E. Show



*Congratulations Kylea Braman*  
Three-Time Supreme Champion &  
many-time Champion ShorthornPlus Female.



*Congratulations James Knudsen*  
Champion ShorthornPlus Female, '13 Minnesota  
State Fair and multiple-time Champion Female



*Congratulations Megan Kurtz*  
Many-time  
Champion Female

*Congratulations Hayden Berenda*  
Grand Champion Female, Newton Fair; Reserve Champion Female,  
Monroe Classic; and Reserve Champion Heifer Rebel Showdown



*Congratulations Violet Lapke*  
Fourth Overall Champion Female, Jeanette Larson  
Memorial; Reserve Champion ShorthornPlus  
Female, '13 Iowa State Fair; and Seven-time  
Champion ShorthornPlus Female



*Congratulations James Johnson*  
One of the winningest  
females in the state of  
Illinois including the  
Champion Shorthorn  
Female, '13 Illinois State  
Fair Jr & Open Show

*Congratulations Riley Johnson*  
Reserve Champion ShorthornPlus Female, '13 Minnesota State Fair  
Jr Show; Champion Shorthorn Female, '13 Minnesota Beef Expo;  
and Grand Champion Female, '12 North Star Classic



# Stockman 898/ Breathless P898 cow family



**SULL Stockman 7302**  
Clone to SULL Stockman 898



**SULL Blue Mamba 1902**  
Grand Champion  
ShorthornPlus  
Female, 2012  
National Junior  
Shorthorn Show  
Owned by the  
Winegardner Family

## SULL Blue Raspberry

Grand Champion Bred & Owned ShorthornPlus Female,  
2013 National Junior Shorthorn Show



## SULL Black Bunny 2194

2012 Reserve National Champion  
ShorthornPlus Female  
Reserve Grand Champion ShorthornPlus  
Female, 2012 NAILE Open Show  
Owned by the Schrag Family

## SULL Blue Baby 2001

Grand Champion ShorthornPlus Female,  
2013 Illinois State Fair Junior Show  
Grand Champion ShorthornPlus Female,  
2013 Illinois Beef Expo  
Owned by the Humphrey Family



## SULL Blue Baby 2001

2012 National Champion ShorthornPlus Female  
Grand Champion ShorthornPlus Female,  
2012 NAILE Open Show  
Reserve Grand Champion ShorthornPlus Heifer,  
2013 Iowa State Fair



**7a****SULL Blue Bonnett 3272 \*xar**

02.27.13 Heifer LE 3272 Polled Reg. # ar58241

DF VEGAS 310M ET \*x,White

CF TRUMP X \*x,Roan

NPS MIRAGE 544 ET \*sx,Roan

TC STOCKMAN 365

SULL STOCKMAN 8404

**ShorthornPlus** • BW: 2.7; WW: 11.5; YW: 19.4; MA: 1.7

- This is one of the top ShorthornPlus' to be sold this year.
- A full sister was Grand Champion ShorthornPlus Female at the 2012 NAILE and National ShorthornPlus Champion Female. At the 2012 National Junior Heifer Show, Hannah Winegardner exhibited Grand Champion ShorthornPlus Female, yet another full sister. In the past few years Joseph O'Sullivan, James Sullivan and Nick Sullivan have all shown National Champion ShorthornPlus Females that were Vegas x Stockman 898's. This is the dominate mating in the ShorthornPlus industry.

**7b****SULL Blue Zoo 3275 ET \*xar**

01.26.13 Heifer LE 3275 Polled Reg. # ar58187

DF VEGAS 310M ET \*x,White

CF TRUMP X \*x,Roan

NPS MIRAGE 544 ET \*sx,Roan

TC STOCKMAN 365

SULL STOCKMAN 7302

**ShorthornPlus** • BW: 2.7; WW: 11.5; YW: 19.4; MA: 1.7

- Smooth with maternal features. This full sister to breed greats has the potential to reach the same success as her famous full sisters have.
- A full sister was Grand Champion ShorthornPlus Female at the 2012 NAILE and National ShorthornPlus Champion Female. At the 2012 National Junior Heifer Show, Hannah Winegardner exhibited Grand Champion ShorthornPlus Female, yet another full sister. In the past few years Joseph O'Sullivan, James Sullivan and Nick Sullivan have all shown National Champion ShorthornPlus Females that were Vegas x Stockman 898's. This is the dominate mating in the ShorthornPlus industry.

**7c****SULL Love Blue 3264 ET \*xar**

03.03.13 Heifer LE 3264 Polled Reg. # ar58167

DF VEGAS 310M ET \*x,White

CF TRUMP X \*x,Roan

NPS MIRAGE 544 ET \*sx,Roan

TC STOCKMAN 365

SULL STOCKMAN 8233

**ShorthornPlus** • BW: 2.7; WW: 11.5; YW: 19.4; MA: 1.7

- A real stunner here. One of the more powerful Vegas x 898's yet. thc
- A full sister was Grand Champion ShorthornPlus Female at the 2012 NAILE and National ShorthornPlus Champion Female. At the 2012 National Junior Heifer Show, Hannah Winegardner exhibited Grand Champion ShorthornPlus Female, yet another full sister. In the past few years Joseph O'Sullivan, James Sullivan and Nick Sullivan have all shown National Champion ShorthornPlus Females that were Vegas x Stockman 898's. This is the dominate mating in the ShorthornPlus industry.







6d  
7d

03.09.13

### **SULL Blue Jeans 3222 ET \*xar**

Heifer

LE 3222

Polled

Reg. # ar58168

DF VEGAS 310M ET \*x,White

CF TRUMP X \*x,Roan

NPS MIRAGE 544 ET \*sx,Roan

TC STOCKMAN 365

SULL STOCKMAN 8233

**ShorthornPlus** • BW: 2.7; WW: 11.5; YW: 19.4; MA: 1.7

- Everyone loves a blue roan. SULL Blue Jeans combines tremendous foot and cow features with classic 898 style. thc
- A full sister was Grand Champion ShorthornPlus Female at the 2012 NAILE and National ShorthornPlus Champion Female. At the 2012 National Junior Heifer Show, Hannah Winegardner exhibited Grand Champion ShorthornPlus Female, yet another full sister. In the past few years Joseph O'Sullivan, James Sullivan and Nick Sullivan have all shown National Champion ShorthornPlus Females that were Vegas x Stockman 898's. This is the dominate mating in the ShorthornPlus industry.



6e  
7e

02.22.13

### **SULL Blue Best 3274 ET \*xar**

Heifer

LE 3274

Polled

Reg. # ar58142

DF VEGAS 310M ET \*x,White

CF TRUMP X \*x,Roan

NPS MIRAGE 544 ET \*sx,Roan

TC STOCKMAN 365

SULL STOCKMAN 898

**ShorthornPlus** • BW: 2.7; WW: 11.5; YW: 19.4; MA: 1.7

- Big footed and built from the ground up. The femininity and proven profitable cow ability is second to none on these 898 daughters. thc
- A full sister was Grand Champion ShorthornPlus Female at the 2012 NAILE and National ShorthornPlus Champion Female. At the 2012 National Junior Heifer Show, Hannah Winegardner exhibited Grand Champion ShorthornPlus Female, yet another full sister. In the past few years Joseph O'Sullivan, James Sullivan and Nick Sullivan have all shown National Champion ShorthornPlus Females that were Vegas x Stockman 898's. This is the dominate mating in the ShorthornPlus industry.



6f  
7f

03.16.13

### **SULL Fancy Blue 3234 ET \*xar**

Heifer

LE 3234

Polled

Reg. # ar58169

DF VEGAS 310M ET \*x,White

CF TRUMP X \*x,Roan

NPS MIRAGE 544 ET \*sx,Roan

TC STOCKMAN 365

SULL STOCKMAN 8233

**ShorthornPlus** • BW: 2.7; WW: 11.5; YW: 19.4; MA: 1.7

- This is one of my favorite ShorthornPlus' in the offering. Made from the ground up and faultless in design, she is what this cow family has been. thc
- A full sister was Grand Champion ShorthornPlus Female at the 2012 NAILE and National ShorthornPlus Champion Female. At the 2012 National Junior Heifer Show, Hannah Winegardner exhibited Grand Champion ShorthornPlus Female, yet another full sister. In the past few years Joseph O'Sullivan, James Sullivan and Nick Sullivan have all shown National Champion ShorthornPlus Females that were Vegas x Stockman 898's. This is the dominate mating in the ShorthornPlus industry.



7g

**SULL Breathless Beauty ET \*xar**

03.01.13 Heifer LE 3184 Polled Reg. # ar58058

SULL RIGHT DIRECTION ET \*x,R/W  
CF TRUMP X \*x,Roan  
NPS DESERT ROSE 004 \*R/WSULL BREATHTAKER 7152 ET 1/2 \*x,B/R  
DF VEGAS 310M ET \*x,White  
SULL STOCKMAN 365

ShorthornPlus • BW: 3.7; WW: 15.0; YW: 26.3; MA: 1.2

- Wild colored show stomper. Extra mass, yet SULL Breathless Beauty combines her mass with a soft sound package. the
- She is a full sibling to Kane Aegerter's 2011 Shorthorn Junior National, 2012 NWSS and 2012 Fort Worth Grand Champion ShorthornPlus Female.



7h

**SULL Blue Breathless ET \*xar**

03.28.13 Heifer LE 3335 Polled Reg. # ar58141

DF VEGAS 310M ET \*x,White  
CF TRUMP X \*x,Roan  
NPS MIRAGE 544 ET \*sx,RoanSULL BLACK BERRY 7418 1/2 \*x,Blk  
CF SOLUTION X ET \*x,R/W/M  
SULL STOCKMAN 365

ShorthornPlus • BW: 4.1; WW: 15.1; YW: 26.0; MA: 1.1

- Angularity, sharp fronted with a tremendous soft hind leg. Lots of future here.
- Her dam SULL Blackberry 7418 has just entered our donor battery and this is her first offering of ET calves. This Solution x Stockman 898 daughter is the model ShorthornPlus female.



7i

**SULL Breathless Blue ET \*xar**

03.03.13 Heifer LE 3190 Polled Reg. # ar58171

DF VEGAS 310M ET \*x,White  
CF TRUMP X \*x,Roan  
NPS MIRAGE 544 ET \*sx,RoanSULL BLACK BERRY 7418 1/2 \*x,Blk  
CF SOLUTION X ET \*x,R/W/M  
SULL STOCKMAN 365

ShorthornPlus • BW: 4.1; WW: 15.1; YW: 26.0; MA: 1.1

- Big middled, chiseled fronted package makes this eye appealing heifer a highly competitive show prospect.
- Her dam SULL Blackberry 7418 has just entered our donor battery and this is her first offering of ET calves. This Solution x Stockman 898 daughter is the model ShorthornPlus female.



Videos of sale cattle on-line October 5th  
at [www.youtube.com/SullivanShorthorn](http://www.youtube.com/SullivanShorthorn)





66 **7j**

04.01.12

**SULL Roan Breathless ET \*xar**

Bred LE 2308 Polled Reg. # ar58109

SULL TRAVELER 9807 ET \*x, Roan  
SULL GNCC ASSET ET \*x, R/W  
SULL SABLE DELIGHT ET \*x, Red  
DF VEGAS 310M ET \*x, White  
SULL BREATHLESS P898 1/2 \*x, B/R  
SULL ANGUS

ShorthornPlus • BW: 3.2; WW: 14.5; YW: 25.3; MA: 1.6

- Bred to SULL Payday; due February 19, 2014.
- The future advancement of the Shorthorn breed is going to be greatly enhanced by the ShorthornPlus program. This stout powerful Traveler daughter bred to calve at 22 months of age to SULL Payday is what the ShorthornPlus program is all about.
- So many mating options for this animal to breed her any way you want. A full sib to Sara's popular Champion Bred & Owned ShorthornPlus at Junior Nationals.



66 **7k**

01.05.12

**SULL Red Breath 2166 ET \*xar**

Heifer LE 2166 Polled Reg. # ar58105

KL PRIME TIME PAYMASTER x, Red  
KL PRIME TIME 685 x, Red  
KL MELITA ROSEWOOD 606 x, Roan  
DF VEGAS 310M ET \*x, White  
SULL BLUE BREATH 0246 ET 1/2 \*x, B/R  
SULL STOCKMAN 898

ShorthornPlus • BW: 0.8; WW: 12.4; YW: 19.6; MA: 4.6

- Bred to SULL Red Demand; due January 27, 2014.
- Flawless constructed Paymaster daughter that has a balanced set of EPD's and a bright future in production. We are excited to see her Red Demand calf.
- SULL Red Breath 2166 is the natural calf out of first calf heifer SULL Blue Breath, the 2011 NWSS Grand Champion ShorthornPlus in the open and junior shows.

# Danny Boy 1304 cow family



66 **8**

03.09.13

**SULL Vegas Nights 3032 x**

Heifer LE 3032 Polled Reg. # pending

DF VEGAS 310M ET \*x, White  
CF TRUMP X \*x, Roan  
NPS MIRAGE 544 ET \*sx, Roan  
CONNEALY DANNY BOY  
TRIPLE B R DIAMOND 1304  
TRIPLE B R DIAMOND 938

ShorthornPlus

- A real beauty here. National level show prospect. The style, substance with brood cow features to be successful at the major shows. th pending
- SULL Vegas Nights 3032's dam is a tremendous Purebred Angus female sired by Danny Boy that was our pick of the entire Triple B Angus dispersal in Nebraska. She will be a future front pasture donor in our ShorthornPlus program.



# Destiny cow family



**WHR V8 Destiny's Choice 3948**



**SULL Salute  
Destiny 9001**

2010-2011 ASA  
Show Heifer of  
the Year  
Reserve Grand  
Champion Female,  
2010 National  
Junior Shorthorn  
Show  
Owned by the  
Aegerter Family

**9a**

## **SULL Destiny's Beauty ET \*x**

01.19.12 Bred LE 2116 Polled Reg. # 4200476

SULL CYCLONE 8242 ET \*x, Red  
CF TRUMP X \*x, Roan  
NPS DESERT ROSE 004 \*, R/W

WHR V8 DESTINY CHOICE 3948 ET \*x, Roan  
CF TRUMP X \*x, Roan  
WF DESTINY'S BEST W30G \*x, Roan

Shorthorn • BW: 4.5; WW: 15.7; YW: 30.5; MA: 0.1

- Bred to SULL Payday; due February 19, 2014.
- A combination of angularity and classic Shorthorn characteristics backed-up by a National Championship successful predicable cow family.
- This mating to SULL Payday on this Destiny Cow family has the ability to be a quick payback for you.



**9b**

## **SULL Lady Destiny 2102 ET \*x**

01.21.12 Bred LE 2102 Polled Reg. # 4200812

SULL CYCLONE 8242 ET \*x, Red  
CF TRUMP X \*x, Roan  
NPS DESERT ROSE 004 \*, R/W

WHR V8 DESTINY CHOICE 3948 ET \*x, Roan  
CF TRUMP X \*x, Roan  
WF DESTINY'S BEST W30G \*x, Roan

Shorthorn • BW: 4.5; WW: 15.7; YW: 30.5; MA: 0.1

- Bred to SULL Payday; due March 6, 2014.
- The Cyclone females have been successful and have done a tremendous job for Cyclone Trace including the 2012 National Junior Heifer Show Champion for Sammi Schrag.
- This Destiny female should have an ideal udder design as her dam 3948 had a picture perfect udder and the Cyclone females we have seen in production have been impressive. Payday is a great merger with this cow family.





# Augusta Pride

## cow family



**Little  
Cedar  
Augusta  
Pride 701**

**GNCC Augusta Pride 3127**



**10a** **SULL Augusta Sunrise ET \*xar**  
03.10.13 Heifer LE 3259 Polled Reg. # ar58111

MONOPOLY \*x,Blk  
LFCC UNSTOPPABLE 727X \*x,Blk

WHR SONNY 8114 ET \*x,Roan  
LITTLECEDAR AUGUSTA PRIDE 701 ET \*x,Roan  
WHR RT AUGUSTA PRIDE 2202 ET \*x,Roan

ShorthornPlus/MaineTainer • BW: 3.0; WW: 11.1; YW: 17.7; MA: -1.7

- What a package of power and grace. A major contender in the ShorthornPlus or MaineTainer arena. Hard to make them this soft yet this powerful.
- Her dam Little Cedar August Pride 701 was a Division Champion at NAILE and NWSS that we purchased off of the Shorthorn Revival sale. She is the powerfully constructed Sonny daughter that comes from the famous Augusta Pride cow family.



**10b** **SULL Augusta Style ET \*ar**  
05.19.13 Heifer LE 3291 Horned Reg. # ar58094

MONOPOLY \*x,Blk  
HEAT WAVE \*x,Blk  
W T F RUTH MEDINA x,Blk

WHR SONNY 8114 ET \*x,Roan  
LITTLECEDAR AUGUSTA PRIDE 701 ET \*x,Roan  
WHR RT AUGUSTA PRIDE 2202 ET \*x,Roan

ShorthornPlus • BW: 3.8; WW: 12.5; YW: 18.9; MA: -1.6

- Admirably named Augusta Style and there is a reason or that. One of the neatest and most fault free females in the entire offering. Young, green with unlimited potential.
- Her dam Little Cedar August Pride 701 was a division champion at NAILE and NWSS that we purchased off of the Shorthorn Revival sale. She is a powerfully constructed Sonny daughter that comes from the famous Augusta Pride cow family.



**10c****SULL Red Augusta 3270 ET \*x**

03.11.13 Heifer LE 3270 Polled Reg. # 4200312

SULL RED REWARD 9321 7/8 \*x,Red  
TEGM RED ADVANTAGE 100T 3/4 \*x,Red  
MCV MARGIE MILLION 503Q \*x,R/W/MWHR JK AUGUSTA PRIDE 8108 ET \*x,Roan  
WHR SONNY 8114 ET \*x,Roan  
SS AUGUSTA PRIDE 3127 \*x,R/W/M

Shorthorn/MaineTainer • BW: 2.7; WW: 11.4; YW: 20.7; MA: -2.0

- SULL Red Reward has done a tremendous job in his short lifetime. It's heifers like this that have made him so popular. If you are looking for a national level show heifer that is dark red and has all the pieces here she is.
- SULL Red Augusta 3270's dam 8108 is one of 3127's best young daughters to date. She was our pick at the top of the WHR 2009 production sale.

**10d****SULL Traveling Augusta ET \***

02.21.12 Bred LE 2272 Horned Reg. # 4200813

SULL TRAVELER 9807 ET \*x,Roan  
SULL GNCC ASSET ET \*x,R/W  
SULL SABLE DELIGHT ET \*x,RedGCC AUGUSTA PRIDE 3127 \*x,Roan  
WHR SONNY 8114 ET \*x,Roan  
SS AUGUSTA PRIDE 3127 \*x,R/W/M

Shorthorn • BW: 3.3; WW: 13.7; YW: 24.3; MA: -2.0

- Bred to SULL Payday; due January 27, 2014.
- This is what we believe in at Sullivan Farms. Stacking prominent cow families for multiple generations. This Sable/Augusta Pride merger created a dark red, super footed, neat fronted cow prospect that calves at 23 months of age to our lead heifer bull, SULL Payday.

**10e****SULL Right Augusta ET \*x**

01.17.12 Bred LE 2174 Polled Reg. # 4200504

SULL RIGHT DIRECTION ET \*x,R/W  
CF TRUMP X \*x,Roan  
NPS DESERT ROSE 004 \*x,R/WWHR JK AUGUSTA PRIDE 8108 ET \*x,Roan  
WHR SONNY 8114 ET \*x,Roan  
SS AUGUSTA PRIDE 3127 \*x,R/W/M

Shorthorn • BW: 4.0; WW: 14.9; YW: 26.1; MA: -2.4

- Bred to SULL Red Demand; due February 19, 2014.
- This is one of the top bred heifers in the offering and is what we envisioned when we mated 8108 to Right Direction. We have many happy customers on their mothering ability of the Right Direction females.
- SULL Red Augusta 3270's dam 8108 is one of 3127's best young daughters to date. She was our pick at the top of the WHR 2009 production sale.





# Jalynn cow family



## SULL Jalynn 0904

Supreme Champion Female, 2011 NAILE  
 Supreme Champion Female, 2011 American Royal  
 Grand Champion ShorthornPlus Female,  
 2011 NAILE Open & Jr Show  
 Grand Champion ShorthornPlus,  
 2011 American Royal Open & Jr Show

## SULL Jalynn Beauty

Reserve Grand Champion ShorthornPlus Female,  
 2013 National Junior Shorthorn Show  
 Grand Champion Prospect Heifer, 2013 NWSS  
 Grand Champion ShorthornPlus Female, 2013 NWSS Open Show  
 Supreme Champion Female, 2013 Purdue AGR  
 Owned by the Aegerter Family



**SULL Jalynn 7281T**  
 Clone to SULL Jalynn 344



11a

## SULL Jalynn's Class ET \*xar

02.07.13 Heifer LE 3277 Polled Reg. # ar58059

SULL RIGHT DIRECTION ET \*x,R/W  
 CF TRUMP X \*x,Roan  
 NPS DESERT ROSE 004 \*x,R/W  
 JSUL JALYNN 344 \*x,Blk  
 HEAT WAVE \*x,Blk  
 MISS FOREPLAY

ShorthornPlus/Chi • BW: 3.2; WW: 13.6; YW: 23.1; MA: 0.9

- Someone is going to have a lot of fun and success with SULL Jalynn's Class. You can't draw one any better made and you have the ability to show this dual registered heifer at two Junior Nationals at the same place in Louisville, Kentucky.
- The past couple of years the JSUL Jalynn 344 cow family has been the source of some of the best of any breed. Take a look at the two females pictured, SULL Jalynn 0904 and SULL Jalynn Beauty, shown by Nick Sullivan and Kane Aegerter respectfully. There is not enough room in the footnote to include all their major show wins.

Videos of sale cattle on-line October 5th at [www.youtube.com/SullivanShorthorn](http://www.youtube.com/SullivanShorthorn)



11b

**SULL Jalynn Oreo Cookie ET \*xar**

02.10.13 Heifer LE 3134 Polled Reg. # ar58063

SULL RIGHT DIRECTION ET \*x,R/W

CF TRUMP X \*x,Roan

NPS DESERT ROSE 004 \*x,R/W

JSUL JALYNN 7244T \*xChi

HEAT WAVE \*x,Blk

JSUL MAXAN 6651

ShorthornPlus/Chi • BW: 3.2; WW: 13.6; YW: 23.1; MA: 0.9

- Oreo Cookie will grab your attention with her unique color pattern, but she will hold-it and gain your respect with her rib shape, brood cow features in an eye appealing package.
- The past couple of years the JSUL Jalynn 344 cow family has been the source of some of the best of any breed. Take a look at the two females pictured, SULL Jalynn 0904 and SULL Jalynn Beauty, shown by Nick Sullivan and Kane Aegerter respectfully. There is not enough room in the footnote to include all their major show wins.



11c

**SULL Jalynn's Pride \*xar**

02.27.12 Bred LE 2128 Polled Reg. # ar56508

SULL PRIMETIME ET \*x,Roan

CF SOLUTION X ET \*x,R/W/M

K-KIM MP MONA LISA 34P \*x,White

JSUL JALYNN 7281  
(CL to SULL Jalynn 344)

HEAT WAVE \*x,Blk

MISS FOREPLAY

ShorthornPlus • BW: 3.2; WW: 13.8; YW: 23.9; MA: 1.0

- Bred to KL Primetime Paymaster; due February 19, 2014.
- Ideal brood cow features with an eye appealing photogenic look. There are a lot of options to breed this high quality ShorthornPlus heifer too. th pending
- The past couple of years the JSUL Jalynn 344 cow family has been the source of some of the best of any breed. Take a look at the two females pictured, SULL Jalynn 0904 and SULL Jalynn Beauty, shown by Nick Sullivan and Kane Aegerter respectfully. There is not enough room in the footnote to include all their major show wins.



## GENERAL SALE INFORMATION

**Terms:** The terms of the sale are cash or check payable to Sullivan Farms. Payment to be made to the clerk immediately following the sale and before the cattle are removed from Sullivan Farms. Purchasers or their representative must sign the bill of sale prior to leaving the sale site.

**Insurance** will be available for your purchase at the sale through Stuart Wilson. Contact either their representative or the clerk at the settlement desk.

**Health:** Each animal will be represented by a state approved health certificate for interstate shipment. Buyers should make themselves aware of the health requirements for their respective states. All vaccinations are up-to-date, and cattle born at Sullivan Farms have been vaccinated.

**Semen Rights:** We are retaining an in-herd semen use on all bulls selling in the Maternal Legends Sale.

**Tibial Hemimelia:** All Shorthorn cattle have been tested TH Free unless otherwise stated.

**Liability:** Each animal will be at the buyer's risk as soon as sold, but will be cared for by the seller for a reasonable amount of time. Neither the owners, employees, auctioneer, sale manager or other affiliated personnel can be responsible for any accidents, but they will make every effort to provide for the safety and comfort of those attending.

**Announcements** made sale day will take precedence over printed material in this catalog.

**Breeding Update/Calving Information:** There will be added information available at the sale site that will list any additions to the catalog information as to new

calves born and new breeding information that will occur after the printing of this catalog.

**ASA Breeding Guarantee:** All animals sell guaranteed to be fertile. Exceptions 1) Disease, or injury occurring after purchase; 2) Bulls being run with the herd prior to 14 months of age. Sullivan Farms will guarantee open heifers to breed; however, please keep in mind that animal conditions influence fertility greatly. If there is a problem, we would want the females to be returned to us to be bred. Open heifers that have been transplanted are not guaranteed. In the event that an animal will not settle with the efforts of the buyer and seller, a sale credit in the amount of the purchase price will be issued to the buyer that can be used at any time on any animal, flush, semen or embryos sold by Sullivan Farms.

**Flushes & DNA:** Sullivan Farms reserves one flush of eight or more grade 1 or 2 embryos at our expense on all females selling. Sullivan Farms retains at our expense the opportunity to obtain a DNA cell line for cloning purposes on all cattle selling in this sale.

**Embryos:** Guarantee one pregnancy on each package of embryos sold if implanted by a certified technician. If a pregnancy is not confirmed, an additional embryo will be received.

**Retained Flushes:** Flushes to take place at the convenience of the buyer at a location of their choice. We will pay all normal costs associated with the flush. Animals may be returned here for transplant if buyer desires at no cost.



# Hot Tamale cow family



## SULL Hot Tamale

Supreme Champion Female, 2010 NAILE  
2010 National Champion ShorthornPlus Female  
Grand Champion ShorthornPlus Female, 2010 NAILE Open & Jr Show



## SULL Tamale 588



## SULL Hot Tamale Too

National Champion ShorthornPlus Female,  
2012 NWSS  
Reserve Grand Champion ShorthornPlus  
Female, 2012 Shorthorn Junior Nationals  
Owned by the Foley Family



## 12a

01.12.13

## SULL Cinnamon Tamale ET \*xar

Heifer LE 3178 Polled Reg. # ar58056

SULL RIGHT DIRECTION ET

CF TRUMP X \*x.Roan

\*x.R/W  
NPS DESERT ROSE 004 \*x.R/W

SULL TAMALE \*x.Blk

HEAT WAVE \*x.Blk

JSUL MOMMA TAMALE 58

ShorthornPlus/Chi • BW: 3.2; WW: 13.6; YW: 23.1; MA: 0.9

- What a red beast. So big footed, powerfully constructed, yet smooth in her overall features. Show her as a ShorthornPlus or Chi and turn her into one of your all time favorite donor cows. thc
- SULL Tamale 588 has been one of the most consistent producers here. She is the dam of SULL Hot Tamale who was the Supreme Champion, 2010 NAILE, and 2010 Junior National ShorthornPlus Champion Female. Gathering-up Grand Championships at KC, NAILE, NWSS and National Junior Heifer Show. SULL Hot Tamale Too, her full sister exhibited by the Foley family, was Supreme Champion Female at the Illinois Beef Expo; Grand Champion ShorthornPlus Female, 2012 NWSS; and Reserve Grand Champion Female at the 2012 Junior Nationals.



## 12b

04.10.13

## SULL Red Hottie 3244 ET \*xar

Heifer LE 3244 Polled Reg. # ar58060

SULL RIGHT DIRECTION ET

CF TRUMP X \*x.Roan

\*x.R/W  
NPS DESERT ROSE 004 \*x.R/W

SULL TAMALE \*x.Blk

HEAT WAVE \*x.Blk

JSUL MOMMA TAMALE 58

ShorthornPlus/Chi • BW: 3.2; WW: 13.6; YW: 23.1; MA: 0.9

- The same package as the Lot 12A heifer only three months younger. Watch this one as she matures. thc
- SULL Tamale 588 has been one of the most consistent producers here. She is the dam of SULL Hot Tamale who was the Supreme Champion, 2010 NAILE, and 2010 Junior National ShorthornPlus Champion Female. Gathering-up Grand Championships at KC, NAILE, NWSS and National Junior Heifer Show. SULL Hot Tamale Too, her full sister exhibited by the Foley family, was Supreme Champion Female at the Illinois Beef Expo; Grand Champion ShorthornPlus Female, 2012 NWSS; and Reserve Grand Champion Female at the 2012 Junior Nationals.



**12c****SULL Red Tamale 3260 ET \*xar**

01.26.13 Heifer LE 3260 Polled Reg. # ar58061

SULL RIGHT DIRECTION ET \*x,R/W  
 CF TRUMP X \*x,Roan  
 NPS DESERT ROSE 004 \*x,R/W  
 HEAT WAVE \*x,Blk  
 SULL TAMALES \*x,Blk  
 JSUL MOMMA TAMALES 58

ShorthornPlus/Chi • BW: 3.2; WW: 13.6; YW: 23.1; MA: 0.9

- Angular, yet powerful brood cow and show prospect. The consistency of quality is impressive in these Lot 12 heifers.
- SULL Tamale 588 has been one of the most consistent producers here. She is the dam of SULL Hot Tamale who was the Supreme Champion, 2010 NAILE, and 2010 Junior National ShorthornPlus Champion Female. Gathering-up Grand Championships at KC, NAILE, NWSS and National Junior Heifer Show. SULL Hot Tamale Too, her full sister exhibited by the Foley family, was Supreme Champion Female at the Illinois Beef Expo; Grand Champion ShorthornPlus Female, 2012 NWSS; and Reserve Grand Champion Female at the 2012 Junior Nationals.

**12d****SULL Timeless Tamale ET \*xar**

04.03.13 Heifer LE 3208 Polled Reg. # ar58065

SULL RIGHT DIRECTION ET \*x,R/W  
 CF TRUMP X \*x,Roan  
 NPS DESERT ROSE 004 \*x,R/W  
 HEAT WAVE \*x,Blk  
 SULL TAMALES \*x,Blk  
 JSUL MOMMA TAMALES 58

ShorthornPlus/Chi • BW: 3.2; WW: 13.6; YW: 23.1; MA: 0.9

- Completeness and style with the right amount of brood cow package describes this Tamale daughter. She will get better every day. thc
- SULL Tamale 588 has been one of the most consistent producers here. She is the dam of SULL Hot Tamale who was the Supreme Champion, 2010 NAILE, and 2010 Junior National ShorthornPlus Champion Female. Gathering-up Grand Championships at KC, NAILE, NWSS and National Junior Heifer Show. SULL Hot Tamale Too, her full sister exhibited by the Foley family, was Supreme Champion Female at the Illinois Beef Expo; Grand Champion ShorthornPlus Female, 2012 NWSS; and Reserve Grand Champion Female at the 2012 Junior Nationals.

**12e****SULL Foxy Tamale 3192 ET \*xar**

01.30.13 Heifer LE 3192 Polled Reg. # ar58037

SULL RIGHT DIRECTION ET \*x,R/W  
 CF TRUMP X \*x,Roan  
 NPS DESERT ROSE 004 \*x,R/W  
 HEAT WAVE \*x,Blk  
 SULL TAMALES \*x,Blk  
 JSUL MOMMA TAMALES 58

ShorthornPlus/Chi • BW: 3.2; WW: 13.6; YW: 23.1; MA: 0.9

- A stout, January full sister to proven champions in the pasture and show ring. Lots of volume of rib shape and smoothness in this animal.
- SULL Tamale 588 has been one of the most consistent producers here. She is the dam of SULL Hot Tamale who was the Supreme Champion, 2010 NAILE, and 2010 Junior National ShorthornPlus Champion Female. Gathering-up Grand Championships at KC, NAILE, NWSS and National Junior Heifer Show. SULL Hot Tamale Too, her full sister exhibited by the Foley family, was Supreme Champion Female at the Illinois Beef Expo; Grand Champion ShorthornPlus Female, 2012 NWSS; and Reserve Grand Champion Female at the 2012 Junior Nationals.







12f

03.07.13

Heifer

LE 3177

Polled

Reg. # ar58062

**SULL Crimson Tamale ET \*xar**

SULL RIGHT DIRECTION ET

CF TRUMP X \*x,Roan

\*x,R/W

NPS DESERT ROSE 004 \*x,R/W

SUL TAMALES \*x,Blk

HEAT WAVE \*x,Blk

JSUL MOMMA TAMALES 58

ShorthornPlus/Chi • BW: 3.2; WW: 13.6; YW: 23.1; MA: 0.9

- Dark red, soft footed with the right combination of eye appeal and body to compete in the ShorthornPlus or Chi arena. the
- SULL Tamale 588 has been one of the most consistent producers here. She is the dam of SULL Hot Tamale who was the Supreme Champion, 2010 NAILE, and 2010 Junior National ShorthornPlus Champion Female. Gathering-up Grand Championships at KC, NAILE, NWSS and National Junior Heifer Show. SULL Hot Tamale Too, her full sister exhibited by the Foley family, was Supreme Champion Female at the Illinois Beef Expo; Grand Champion ShorthornPlus Female, 2012 NWSS; and Reserve Grand Champion Female at the 2012 Junior Nationals.



12g

03.27.13

Heifer

LE 3206

Polled

Reg. # ar58064

**SULL Tamale Time ET \*xar**

SULL RIGHT DIRECTION ET

CF TRUMP X \*x,Roan

\*x,R/W

NPS DESERT ROSE 004 \*x,R/W

SUL TAMALES \*x,Blk

HEAT WAVE \*x,Blk

JSUL MOMMA TAMALES 58

ShorthornPlus/Chi • BW: 3.2; WW: 13.6; YW: 23.1; MA: 0.9

- Massive, yet soft footed and still has a neat front one-third. These Tamale heifers are timeless and get better with age.
- SULL Tamale 588 has been one of the most consistent producers here. She is the dam of SULL Hot Tamale who was the Supreme Champion, 2010 NAILE, and 2010 Junior National ShorthornPlus Champion Female. Gathering-up Grand Championships at KC, NAILE, NWSS and National Junior Heifer Show. SULL Hot Tamale Too, her full sister exhibited by the Foley family, was Supreme Champion Female at the Illinois Beef Expo; Grand Champion ShorthornPlus Female, 2012 NWSS; and Reserve Grand Champion Female at the 2012 Junior Nationals.



12h

03.23.13

Heifer

LE 3221

Polled

Reg. # ar58170

**SULL Sizzlin Tamale ET \*xar**

SULL RIGHT DIRECTION ET

CF TRUMP X \*x,Roan

\*x,R/W

NPS DESERT ROSE 004 \*x,R/W

SUL TAMALES \*x,Blk

HEAT WAVE \*x,Blk

JSUL MOMMA TAMALES 58

ShorthornPlus/Chi • BW: 3.2; WW: 13.6; YW: 23.1; MA: 0.9

- SULL Sizzlin Tamale is an exceptionally big bodied, angular featured prospect. She has the same body composition as her many-time champion full sister.
- SULL Tamale 588 has been one of the most consistent producers here. She is the dam of SULL Hot Tamale who was the Supreme Champion, 2010 NAILE, and 2010 Junior National ShorthornPlus Champion Female. Gathering-up Grand Championships at KC, NAILE, NWSS and National Junior Heifer Show. SULL Hot Tamale Too, her full sister exhibited by the Foley family, was Supreme Champion Female at the Illinois Beef Expo; Grand Champion ShorthornPlus Female, 2012 NWSS; and Reserve Grand Champion Female at the 2012 Junior Nationals.



# Foxx cow family



**K-Kim Foxx 201P**

**13a**

## **SULL Foxx Roxy 2202 ET \*x**

01.07.12 Bred LE 2202 Polled Reg. # 4200507

CF SOLUTION X ET \*x,R/W/M  
 CF TRUMP X \*x,Roan  
 NPS DESERT ROSE 004 \*,R/W  
 JM VORTEC ET \*,Roan  
 ELBEE BESSIE F120 x,R/W/M

**Shorthorn** • BW: 4.9; WW: 19.0; YW: 31.1; MA: 0.4

- Bred to SULL Payday; due March 21, 2014.
- This is your typical deep-bodied, sound structured, Solution daughter. So complete and not extreme in any one way.
- The Foxx 201P cow family has done a tremendous job at K-Kim and Gana/Nisley. We purchased a flush from her and had great success with these Solution daughters.



**13b**

## **SULL Foxy Solution ET \*x**

01.10.12 Bred LE 2213 Polled Reg. # 4220716

CF SOLUTION X ET \*x,R/W/M  
 CF TRUMP X \*x,Roan  
 NPS DESERT ROSE 004 \*,R/W  
 JM VORTEC ET \*,Roan  
 ELBEE BESSIE F120 x,R/W/M

**Shorthorn** • BW: 4.9; WW: 19.0; YW: 31.1; MA: 0.4

- Bred to SULL Payday; due January 27, 2014.
- Broody made Solution daughter that has the ability to make a quick return on your investment. Being bred early to calve January 27th to SULL Payday. Payday has become our lead heifer bull at Sullivan Farms.
- The Foxx 201P cow family has done a tremendous job at K-Kim and Gana/Nisley. We purchased a flush from her and had great success with these Solution daughters.





# Sable cow family



**Milestone Sable 01**



**SULL Sable's Luck 1097**

Grand Champion ShorthornPlus Female, 2012 NAILE Jr Show  
Grand Champion ShorthornPlus Female, 2012 Iowa State Fair



**SULL Traveler 9807**

Grand Champion Bull, 2011 American Royal, NAILE and NWSS

**Hill Haven Bold**

The outcross, Canadian sire to many of the bred heifers in the offering.



**14a**

**SULL Bobbi's Sable 3292 ET \*ar**

01.21.13 Heifer LE 3292 Horned Reg. # ar58072

MONOPOLY \*x,Blk

HEAT WAVE \*x,Blk

W T F RUTH MEDINA x,Blk

SULL SABLE 01 - 2CL ET CL \*x,Red

CCS EQUITY'S CHARMER ET \*x,R/W/M

WF EVERGREEN SABLE ET \*x,Roan

ShorthornPlus • BW: 4.4; WW: 16.2; YW: 24.6; MA: 0.4

- This one will be a load to get around in the show ring and will transfer that into the donor pasture as well. Lot 14A is the kind that makes raising cattle exciting and worthwhile. the
- This big-time ShorthornPlus prospect is a full sib to Luke Elder's 2012 Grand Champion ShorthornPlus Heifer at the NAILE and Grand Champion Heifer at the 2012 Iowa State Fair.



**14b****SULL Red Sable 2156 ET \*x**

01.05.12 Bred LE 2156 Polled Reg. # 4200477

HILL HAVEN BOLD 4X x,Red  
 SULL SABLE 01 - 3CL ET \*x,Red  
 DF GOLD EAGLE 0019 \*x,Red  
 MCQUEEN-VUE'S HAPPY GO LUCKY x,Red  
 CCS EQUITY'S CHARMER ET \*x,R/W/M  
 WF EVERGREEN SABLE ET \*x,Roan

Shorthorn • BW: 3.3; WW: 15.1; YW: 22.5; MA: 1.8

- Bred to SULL Payday; due February 9, 2014.
- This is one of the top-end bred heifers in the offering. She blends a nice pedigree of production and phenotype into a red maternal package. These Bold females are going to be production powerhouses. the
- Sable 01 has been a dominate producer of National Champions, herself being one and she has produced a National Champion in the ShorthornPlus and Shorthorn arena.

**14c****SULL Sable's Red 2161 ET \*x**

01.04.12 Bred LE 2161 Polled Reg. # 4200480

HILL HAVEN BOLD 4X x,Red  
 MILESTONE SABLE 01 \*x,Red  
 DF GOLD EAGLE 0019 \*x,Red  
 MCQUEEN-VUE'S HAPPY GO LUCKY x,Red  
 CCS EQUITY'S CHARMER ET \*x,R/W/M  
 WF EVERGREEN SABLE ET \*x,Roan

Shorthorn • BW: 3.2; WW: 14.0; YW: 21.8; MA: 1.1

- Bred to SULL Red Demand; due January 27, 2014.
- Bolder and stouter version of her full sister Lot 14B. We are excited to see how the Bold x Red Demand mating transpires. It should be the perfect blend of brood cow efficiency. Lot 14C is going to calve early as well. the
- Sable 01 has been a dominate producer of National Champions herself being one and she has produced a National Champion in the ShorthornPlus and Shorthorn arena.

**14d****SULL Red Sable 2080 ET \*x**

01.19.12 Bred LE 2080 Polled Reg. # 4200705

KL PRIME TIME PAYMASTER x,Red  
 MILESTONE SABLE 01 \*x,Red  
 KL PRIME TIME 685 x,Red  
 KL MELITA ROSEWOOD 696 x,Roan  
 CCS EQUITY'S CHARMER ET \*x,R/W/M  
 WF EVERGREEN SABLE ET \*x,Roan

Shorthorn • BW: 2.1; WW: 15.9; YW: 25.9; MA: 2.9

- Bred to SULL Red Demand; due January 27, 2014.
- Looks like a young carbon copy of her dam Milestone Sale 01. Sired by the outcross super sire Paymaster and out of one of the most prolific cow families in Shorthorn history. Production orientated genetics with a balanced EPD profile and the phenotype you desire.
- Sable 01 has been a dominate producer of National Champions, herself being one and she has produced a National Champion in the ShorthornPlus and Shorthorn arena.





# Picture Perfect cow family



CF Picture Perfect 076



SULL Picture Perfect 505



15a

## SULL Picture Perfect ET \*xar

01.20.12 Bred LE 2205 Polled Reg. # ar58163

TEGM RED ADVANTAGE ,Red HAA COUNTESS 243P  
 HALL'S ENCHANTRESS 38M  
 SULL PERFECT SOLUTION 505 \*x,RAV/M  
 CF SOLUTION X ET \*x,RAV/M  
 CF PICTURE PERFECT 076TPX \*x,Red

ShorthornPlus • BW: 2.3; WW: 9.0; YW: 21.2; MA: 1

- Bred to SULL Payday; due March 6, 2014.
- Massive muscled, red headed with a combination of outcross genetics on the sire side and the proven Picture Perfect cow family on the dam side.
- The Payday progeny from this mating should be the perfect compliment and should produce stylish outcross genetics. Lot 15A is a Registered 7/8 ShorthornPlus her progeny will be purebred when out of a purebred bull.



15b

## SULL Picture Perfect ET \*xar

01.10.12 Bred LE 2212 Polled Reg. # ar58189

TEGM RED ADVANTAGE ,Red HAA COUNTESS 243P  
 HALL'S ENCHANTRESS 38M  
 SULL PERFECT SOLUTION 505 \*x,RAV/M  
 CF SOLUTION X ET \*x,RAV/M  
 CF PICTURE PERFECT 076TPX \*x,Red

ShorthornPlus • BW: 2.3; WW: 9.0; YW: 21.2; MA: 1

- Bred to KL Primetime Paymaster; due April 5, 2014.
- Truly a Picture Perfect female with the advantage of being sired by the TEGM Red Advantage bull. This opens up a lot of mating options for future progeny. Check out her look and phenotype.
- Lot 15A is a registered 7/8 ShorthornPlus her progeny will be purebred when out of a purebred bull.



15c

**SULL Picture Perfect ET \*x**

01.13.12 Bred LE 2173 Polled Reg. # 4200713

HILL HAVEN BOLD 4X x,Red  
 DF GOLD EAGLE 0019 \*x,Red  
 MCQUEEN-VUES HAPPY GO LUCKY x,Red  
 CF TRUMP X \*x,Roan  
 SULL PICTURE PERFECT 076 ET \*x,Red  
 SBF PICTURE PERFECT 101D ET \*x,Red

Shorthorn • BW: 2.4; WW: 12.0; YW: 19.6; MA: 3.0

- Bred to KL Primetime Paymaster; due February 19, 2014.
- Bold and beautiful, these Hill Haven Bold daughters have surpassed our expectations. They will go on to be beautiful functional outcross breeding pieces for your operation. Combine this with the style of the Picture Perfect cow family and you receive this quality of animal with the balanced EPD profile and a different twist to genetics, hard to come by.



# Tina

cow family

**SULL Tina Marie 921****SULL Tina Class 0247**

Supreme Champion Female, 2011 Ohio State Fair  
 Third Overall Female, 2011 National Junior Shorthorn Show  
 Owned by the Hunt Family

16

**SULL Total Tina 3981 ET \*x**

04.12.13 Heifer LE 3981 Polled Reg. # 4200678

SULL RIGHT DIRECTION ET \*x,R/W  
 CF TRUMP X \*x,Roan  
 NPS DESERT ROSE 004 \*x,R/W  
 WHR SONNY 8114 ET \*x,Roan  
 SULL TINA CLASS 0247 ET \*x,White  
 SULL TINA MARIE P921 \*x,Roan

Shorthorn • BW: 4.3; WW: 16.7; YW: 30.6; MA: -0.7

- A classic roan Shorthorn show heifer and breeding piece. Blends the traits of Right Directions fleshing ability and soundness with SULL Tina Classes flawless phenotype.
- SULL Tina Class 0247 was one of the most popular show heifers of the 2011 show season. Check out her phenotype and winnings in the picture above.





# SULL Genetics Working Across the Country.

## CATES FARMS STAR SEARCH X SALE

\$47,500 - Lot 12C, Open Heifer - CF HF Mattis Rose 288 A ET. A white, horned, April 6, 2012 daughter of **SULL GNCC Asset** and out of CC Robjoy Mattis 31P.

## A NEW GENERATION SALE

\$4,900 - Lot 14, Open Heifer - CH Mona Lisa 244 ET. A roan, horned, April 03, 2012 daughter of WHR Sonny 8114 ET and out of **SULL Mona Lisa Smile 8088**.

\$4,700 - Lot 2, Open Heifer (half-interest) - CH TRNR Meg 238. A red, polled, March 26, 2012 daughter of **SULL Red Reward 9321** and out of K-Kim Meg 270N.

## THE SOCIAL PRODUCTION SALE

\$4,300 - Lot 9, Open Heifer - Abby Walker, Rossville, IN, could not hold back her excitement for this white, February 2012, heifer sired by Jakes Proud Jazz 266L and out of **SULL Mona Magic 6255**.

## KOLT CATTLE CO. SIMPLE CHOICES SALE

\$35,000 - Lot 16, Open Heifer - KOLT-DWE Tempting You 359. A roan, polled, April 1, 2012 daughter of **SULL GNCC Asset** and out of **SULL Temptress Mirage**.

\$17,000 - Lot 17, Open Heifer - KOLT-DWE Temptation 5. A rwm, polled, May 5, 2012 daughter of **SULL GNCC Asset** and out of **SULL Temptress Mirage**.

## LITTLE CEDAR CATTLE COMPANY'S THE GREAT SHORTHORN REVIVAL

\$23,000 - Lot 2A, Open Heifer - Little Cedar Cumberland 1217. A red, polled, May 15, 2012 daughter of **SULL Red Rock 9351** and out of RL Cumberland 5201.

\$14,500 - Lot 4, Bred Heifer - **SULL Sassy Crystal ET**. A roan, polled, October 17, 2010 daughter of Little Cedar Aviator 503X and out of Sherwood Lady Crystal.

## CYCLONE TRACE CATTLE COMPANY'S SHORTHORNS UP FRONT SALE

\$45,000 - Lot 15B, Open Heifer - CYT DSC Max Rosa Ready ET. A red, polled, May 1, 2012 daughter of **SULL Cyclone 8242** and out of Mindemann Max Rosa 310.

\$34,000 - Lot 4A, Open Heifer - CYT Missing Mirage 2120. A roan, polled, March 28, 2012 daughter of CYT Maxim 9020 and out of **SULL Mirage Forever Ever**.

\$33,000 - Lot 4B, Open Heifer - CYT Maxed Mirage 2125. A rwm, polled, April 1, 2012 daughter of CYT Maxim 9020 and out of **SULL Mirage Forever Ever**.

## GREENHORN CATTLE CO. WHERE GREAT FEMALES MAKE A DIFFERENCE SALE

\$29,000 - Lot 10, Open Heifer - MF Seductive Rose 70. A roan, polled, January 7, 2012 daughter of **SULL GNCC Eldorado** and out of **SULL Seductive Rose 645**.

\$17,500 - Lot 2A, Open Heifers - GCC RF Asset Charm 71. A rwm, horned, April 6, 2012 daughter of **SULL GNCC Asset** and out of RL Sonny Charm 7102

\$17,000 - Lot 1, Open Heifer - GCC Cherri Blossom. A white, polled, April 2, 2012 daughter of **SULL GNCC Asset** and out of Little Cedar Cherri 504.

## SWING THE GATE SALE

\$20,000 - Lot 21, Open Heifer - RSF Killian Rose 5132. A roan, polled, May 13, 2012 daughter of **SULL Red Demand 9321** and out of NPS Lillian Rose L 4004.

## DURHAM NATION SALE

\$8,500 - Lot 5, Open Heifer - JSF April Lady 15Z. A roan, polled February 27, 2012 daughter of **SULL Red Demand 9329** and out of JSF April Lady 2W.

## NORTH AMERICAN HEIFER CALF FUTURITY SALE

\$7,000 - Lot 10, Open Heifer - JKN Miss Secret 270Z SA. A roan, horned, February 25, 2012 daughter of **SULL Asset** and out of JKN Miss Secret 270.

\$6,750 - Lot 5, Open Heifer - DSF Augusta Pride 181 ET. A r/w, polled, January 5, 2012 daughter of **SULL GNCC Eldorado** and out of GCC Augusta Pride 3127.

## GREENHORN CATTLE CO. WHERE FUTURE GENERATIONS ARE CREATED SALE

\$8,000 - Lot 2A, Sexed Heifer Embryos. Sired by **SULL Right Direction** and out of GCC August Pride 3127.

\$6,500 - Lot 7A, Sexed Heifer Pregnancy. Sired by **SULL Red Reward 9321** and out of CCS Robjoy Mattis 31P.

## SCHRAG SHORTHORN FARMS FAMILY EVENT SALE

\$21,000 - Lot 14B, Open Heifer - SS Myrtle Bo 280 ET. A red, polled, May 1, 2012 daughter of SS What's Up 003 and out of **SULL Myrtle Bo 9154**.

## THE SUMMIT SALE

\$6,000 - Lot 13C, Heifer Sexed Pregnancy. A mating due May 1, 2013 sired by **SULL Red Reward 9121** and out of CCS Robjoy Mattis 31P.

## 2ND ANNUAL ON-LINE FUNDING THE FUTURE SALE

\$2,340 - Lot 1 - Sexed heifer embryos out of **SULL Cyclone 8242** and CYT Rori 928R.

\$2,000 - Lot 7 & 8 - Five units of conventional semen on the deceased **SULL GNCC Grey Goose**.

## IOWA ROYAL SHORTHORN SALE

\$7,000 - Lot 19, Bull - GS&J Full Service Bank 6Z. A roan, polled, March 27, 2012 son of **SULL Red Demand 9329** and out of Lakeside Nonpareil 704T.

\$6,200 - Lot 56, Open Heifer - SS Myrtle Bo 285. A red, polled, May 11, 2012 daughter of SS What's Up 003 and out of **SULL Myrtle Bo 9154**.

## MIDWEST SHORTHORN SPECTACULAR SALE

\$6,100 - Lot 14, Open Heifer - KFSC Hannah's Mirage 411Z. A roan, polled, April 11, 2012 daughter of SS What's Up 003 and out of **SULL Mirage's Roan Mist**.

\$4,900 - Lot 2, Open Heifer - CH Brenda 201. A rwm, polled, January 6, 2012, daughter of **SULL GNCC Eldorado** and out of Ar Su Lu Brenda 239.

\$4,600 - Lot 24, Open Heifer - CH TRNR Meg 276. A red, polled, June 20, 2012 daughter of **SULL Red Reward 9321** and out of K-Kim Meg 270N.

\$4,100 - Lot 1 - Bred Heifer - RGLC Vogues Reward 120 - A rwm - polled - May 15, 2011 daughter of **SULL Red Reward 9321** and out of AA Miss Vogue 1N.

## TENNESSEE BEEF AGRIBITION SHORTHORN SALE

\$3,500 - Lot 16, Open Heifer, consigned by SharBen Shorthorns. A daughter of **SULL Achiever 8129**. A red, heifer that is moderate framed and very easy fleshing in a very stout package.

## OHIO BEEF EXPO

\$6,750 - Lot 7, Bull - BOY Stone Cold 201. Talk about a show bull stud this roan, polled, January 2012 bull. This extremely heavy muscled herd sire was out of BOY Special Charm Son 271 and sired by **SULL Outback 8116**.

## CATES FARMS MODOC MADNESS SALE

\$33,000 - Lot 7, Open Heifer - CF Super Sable 2129 - This outstanding September daughter of CF Solution and **SULL Elegant Sable** will turn heads this year.

\$22,500 - Lot 6, Open Heifer - CF Augusta Pride 2129. This very striking stout made, July daughter of **SULL GNCC Eldorado** will be very competitive on the show circuit.

## RED DIRT/PURPLE BANNERS VOLUME III SALE

\$23,500 - Lot 1, Cow - **SULL Red Countess 8007** - A red, horned, January 2008 daughter of SR Red Riders Drive and out of HAA Countess 22P.

\$23,000 - Lot 4, Open Heifer - RFC Mirror Image 4200. A roan, polled, November 05, 2012 daughter of **SULL Red Reward 9321** and out of **SULL Mirage Forever 8121**.

\$10,000 - Lot 13, Open Heifer - RFC That Pride 692X. A rwm, polled, October 18, 2012 daughter of **SULL Right Direction** and out of GCC Augusta Pride 3127.

\$10,000 - Lot 24 - RFC Maggie 277 ET - A white, polled, October 5, 2012 daughter of **SULL Beef** and out of WHR Maggie D FR54.

\$10,000 - Lot 64, Bull - RFC Answer 719. A roan, polled, November 1, 2012 son of **SULL Cyclone 8242** and out of WHR RT Augusta Pride 510.

## WHR SHORTHORNS LONE STAR EDITION XIX SALE

\$20,000 - Lot 69, Cow/Calf Pair - BLC V8 Rosie Diamonds. A rwm, polled, February 11, 2011 daughter of Hi View's Ace of Diamonds and out of **SULL Seductive Rose 645**.

## MISSOURI CLASSIC SHORTHORN SALE

\$2,650 - Lot 1, Bull - KF Final Solution 820. A red, polled, September 2008 son of **SULL GNCC Final Solution** and out of TNT Kool Beauty.

## CAGWIN FARMS BREEDERS OPPORTUNITY SALE

\$10,500 - Lot 3, Cow/Calf Pair - **SULL DAZZLING RUBY 8115**. A rwm, polled, 2008 daughter of TM Dazzler 54P and out of HD Ruby 903. At her side was a rwm, polled, May 29, 2013 heifer calf sired by **SULL Liquid Asset 0101**.

\$6,500 - Lot 23, Cow/Calf Pair - JT Gloria 100. A roan, polled, 2007 daughter of Alta Cedar Signature 119N and out of JT Gloria 95 selling bred to JSF Gauge. At her side was a rwm, polled, February 5, 2013 heifer calf sired by **SULL Liquid Asset 0101**.

\$6,250 - Lot 25, Cow/Calf Pair - Waukaru Lassie 7089. A red, polled, 200 daughter of Waukaru Gold Mine 5059 and out of Waukaru Lassie 5107. At her side was a roan, polled, February 14, 2013 heifer calf sired by **SULL Liquid Asset 0101**.

\*\*All sale reports were obtained from *Shorthorn Country*.



# MATERNAL LEGENDS

"We have been very pleased with how the heifers have adapted to our part of the country and with no feed supplemental input. They have calved unassisted and are raising some very nice calves. We were very pleased with these heifers as they were sight unseen purchases other than discussing with John Sullivan."

- Mike Davis, Springlake Farm Herdsman, TN

"We have been impressed with the maternal traits of the Right Direction females we have purchased from Sullivan Farms. We have purchased bred females the past three years and their mothering ability has exceeded our expectations."

- Larry Stouder, Red Oak, IA

"In range conditions, the bred heifers we have purchased from Sullivan Farms have done very well and have taken good care of their calves. This year, one of our best show heifer prospects is out of a SULL bred female."

- Doug Dean, D-Heart Ranch, Imperial, NE

My wife and I are Equine Veterinarians new to the Shorthorn breed and wanted to start with the best breed genetics we could afford which led us to the Maternal Legends Sale. We are very pleased with our purchases and feel we got great value for our dollars. We have two high quality calves from the bred heifers we purchased that are doing well in local shows. The yearling heifers are exceptional and we chose one to show. Also, both John Sullivan and John Elder have been very helpful with breeding advice and semen selection for all of our heifers.

- Mike Cavey, Respite Farms, KY



V8 CF Mona Madness 1124, Fifth Overall Champion Heifer, exhibited by Cole Whisman.



Mona Lisa, Grand Champion Bred & Owned Heifer, exhibited by Hannah Winegardner.



High selling lot at the '13 Robinette & KOLT Red Dirt Sale for \$23,500 for half-interest.



Dam of SULL Payday and purchased in our 2012 Maternal Legends Sale by Don St. Legder for \$4,750.



Purchased by Rocking G Land & Cattle in the Maternal Legends Sale. Now one of the breeds top producing females.



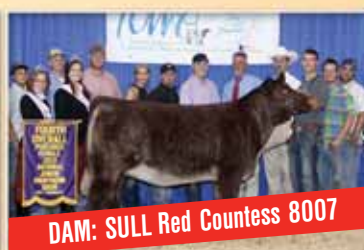
CF Super Sable 2130, purchased as an embryo for \$900. Sold in Cates Modoc Madness Sale for \$35,000. Div II Champion, '13 National Junior Shorthorn Show for Cole Whisman.



A many time champion CYT heifer for Sammi Schrag. Her dam was purchased in the Maternal Legends Sale.



High selling lot at the '13 Cagwin Farms Sale for \$10,500.



CF Countess 252 TP, Fourth Overall Champion Heifer, exhibited by Cole Clanton.



2013 two-time Denver Champion Female for Stade and O'Sullivan's purchased in Maternal Legends Sale for \$15,500.

## - PROGENY FROM EGGS PURCHASED-



The recently named Reserve Grand Champion female, '13 Minnesota State Fair was an \$900 egg purchase by the Berg Family.



CF Painted Sable 31 SOL, a Solution x Elegant Sable that was purchased as an embryo for \$900. She sold in the recent Cates Farms sale for \$40,000.



CF 212, this SULL Blue x SULL Mattis 382 was a \$1,025 embryo purchase who recently returned \$60,000 to Cates Farms.



A many time champion feeder calf for the Barb Foley Family. She was the result of an embryo purchased for \$1,000.



# Sneed Dream Girl

cow family



**RS Dream Girl 904**



**RR Dream Girl 15th**



**17a**

## **SULL Dream Girl 2307 ET x**

02.25.13 Heifer LE 2307 Polled Reg. # 4200814

HILL HAVEN BOLD 4X x,Red  
 DF GOLD EAGLE 0019 \*x,Red  
 MCQUEEN-VUE'S HAPPY GO LUCKY x,Red  
 RS MAX 307 335 01 x,Red  
 RS DREAMGIRL 904 04 x,Red  
 RR DREAM GIRL 15TH x,Red

**Shorthorn** • BW: 0.5; WW: 11.1; YW: 19.4; MA: 0.3

- Bred to KL Primetime Paymaster; due March 1, 2014.
- Complete outcross genetics with a deep productive brood cow package. Bold and his daughters are going to make a name for themselves.
- We sure appreciate the balance of traits that the Sneed Dream Girl cow family offers us. Moderate in birth still powerful with performance and still provide some balance and eye appeal as well.



**17b**

## **SULL Dream Girl 2095 ET \*x**

02.10.12 Bred LE 2095 Polled Reg. # 4200708

SULL RED ROCK 9351 ET 7/8 \*x,Red  
 TEGM RED ADVANTAGE 100T 3/4 \*x,Red  
 JSF PRINCESS 0441E x,Red  
 RS MAX 307 335 01 x,Red  
 RS DREAMGIRL 904 04 x,Red  
 RR DREAM GIRL 15TH x,Red

**Shorthorn** • BW: 0.9; WW: 13.1; YW: 26.6; MA: -2.0

- Bred to SULL Payday; due February 19, 2014.
- Tremendously designed bred heifer with a different twist in outcross genetics. Note her light birth weight and doing all the things she should. Calving in 24 months to SULL Payday.
- We sure appreciate the balance of traits that the Dream Girl cow family offers us. Moderate in birth, still powerful with performance and still provide some balance and eye appeal as well.



17c

**SULL Dream Girl 2204 ET \*x**

01.25.12 Bred LE 2204 Polled Reg. # 4200508

SULL RED REWARD 9321 7/8 \*x,Red  
 TEGM RED ADVANTAGE 100T 3/4 \*x,Red  
 MCV MARGIE MILLION 503Q \*x,R/W/M  
 AR SU LU MACKENZIE x,Red  
 RR DREAM GIRL 15TH x,Red  
 RR DREAM GIRL 2ND x,Red

Shorthorn • BW: 1.8; WW: 13.0; YW: 24.6; MA: -0.6

- Bred to SULL Payday; due February 19, 2014.
- Stout constructed outcross breeding piece. We have been so happy with our Red Reward progeny. They calve easy, milk well, and are easy fleshing in an eye appealing package.
- We sure appreciate the balance of traits that the Sneed Dream Girl cow family offers us. Moderate in birth still powerful with performance and still provide some balance and eye appeal as well.



# Dolly/3D cow family

**SULL Dazzling Dolly****WHR LS Dolly D 2116**

18

**SULL Demand Dolly 2200 ET \*x**

01.13.12 Bred LE 2200 Polled Reg. # 4200506

SULL RED DEMAND 9329 ET 7/8 \*x,Red  
 TEGM RED ADVANTAGE 100T 3/4 \*x,Red  
 KL MARIGOLD MARIA 974 \*x,Red  
 TM DAZZLER 54P \*x,R/W/M  
 SULL DAZZLING DOLLY ET \*x,R/W/M  
 WHR LS DOLLY D 2116 ET \*x,Roan

Shorthorn • BW: 2.0; WW: 17.9; YW: 32.6; MA: 2.2

- Bred to KL Primetime Paymaster; due February 19, 2014.
- This is the model for the modern Shorthorn female. If you are interested in moving the breed forward this is the type of female that can do it. Soft footed easy fleshing brood cow power house. Her Paymaster calf has the ability to be very valuable.
- SULL Dazzling Dolly is one of our young up-and-coming donor cows here at Sullivan Farms. We are impressed with the combination of productivity brood cow features and eye appeal that this cow family possesses. Buy with confidence.





# Revival<sub>cow family</sub>

**SS Revival**



**19**

01.03.12

**SULL Revival Lady 2152 ET \*x**

Bred LE 2152 Polled Reg. # 4200711

CF TRUMP X \*x,Roan

PHILDON CUNIA DIVIDEND 7/8 \*x,R/W

CF CARMELE NG NG 158X \*x,R/W/M

DUNBEACON VENTURE x,R/W/M

MARIEHAMN MS REVIVAL 1A 3/4 ,Red

SS REVIVAL 7/8 \*x,R/W/M

**Shorthorn** • BW: 3.6; WW: 21.1; YW: 35.3; MA: 4.6

- Bred to KL Primetime Paymaster; due January 27, 2014.
- It is hard to argue with the success that the Old Revival cow has had over the years. She truly has been a production masterpiece for Schrag Farms and many others.
- This Trump daughter has the smoothness of Trump and brood cow features of Revival to make a nice production breeding piece. Calves early, January 27th to the popular Paymaster bull.

# Sierra Doozy<sub>cow family</sub>

**SULL Roan Solution 8384**



**20**

03.01.12

Bred

**JJ Sierra BZ \*x**

LE 219 Polled Reg. # 4188895

SULL ROAN SOLUTION 8384 ET \*x,Roan

CF SOLUTION X ET \*x,R/W/M

SULL BEAUTY QUEEN 570 ET \*x,Roan

JJ CL DOOZEY DOZ \*x,R/W/M

CC CANDE'S DOZER \*x,Roan

JJ CL SMOOTHIE BL \*x,R/W

**Shorthorn** • BW: 5.0; WW: 18.1; YW: 29.3; MA: 1.4

- Bred to KL Primetime Paymaster; due February 19, 2014.
- Quite a doozy here. Sired by the SULL Roan Solution bull that Double J purchased at a past No Bull sale and out of the outcross Doozy female.
- Lot 20 produces the same phenotype and flare for style as her sire Roan Solution. You are going to admire this heifers sleek, sharp, sound features and I bet you will be happy with her Paymaster calf coming.



# Princess

cow family



**Melbar Princess Mag 461**

**SULL Red Princess**

**21a**

## **SULL Roan Princess ET \*x**

01.21.12 Bred LE 2079 Polled Reg. # 4200704

SULL CYCLONE 8242 ET \*x,Red  
CF TRUMP X \*x, Roan  
NPS DESERT ROSE 004 \*x, R/W  
DF VEGAS 310M ET \*x, White  
MELBAR PRINCESS MAG 461 \*x, Roan  
MELBAR PRINCESS MAG 804 \*x, Red

**Shorthorn** • BW: 4.8; WW: 18.8; YW: 33.6; MA: 2.5

- Bred to SULL Payday; due March 1, 2014.
- Cyclone has sure matched well with the Princess Mag 461 cow. Many of the sale features this year at CYT are again Cyclone daughters. This roan bred heifer should combine well with the popular Payday bull.
- M461 herself was the Grand Champion Prospect Heifer at the NWSS. She is also the dam of the many time champion females exhibited by the Humphrey and Patton families in 2011.



**21b**

## **SULL Lady Princess ET \*x**

02.11.12 Bred LE 2134 Polled Reg. # 4200709

SULL CYCLONE 8242 ET \*x,Red  
CF TRUMP X \*x, Roan  
NPS DESERT ROSE 004 \*x, R/W  
DF VEGAS 310M ET \*x, White  
MELBAR PRINCESS MAG 461 \*x, Roan  
MELBAR PRINCESS MAG 804 \*x, Red

**Shorthorn** • BW: 4.8; WW: 18.8; YW: 33.6; MA: 2.5

- Bred to SULL Payday; due February 19, 2014.
- One of the extremely cowy, deep bodied bred heifers in the entire offering. You really have to appreciate this heifer's good back foot, body capacity and pedigree. I think the Payday mating is going to work quite well with these Cyclone daughters.
- M461 herself was the Grand Champion Prospect Heifer at the NWSS. She is also the dam of the many time champion females exhibited by the Humphrey and Patton families in 2011.





# Jane Mary

## cow family

**SS Lakeside  
Jane Mary**



**22**

02.04.12

Bred

**SULL Jane Mary 2048 \*x**

LE 2048

Polled

Reg. # 4200469

KL PRIME TIME PAYMASTER x Red  
KL PRIME TIME 685 x, Red  
KL MELITA ROSEWOOD 696 x, Roan  
SULL GNCC ELDORADO ET \*x, Roan  
CF JANE MARY 072 EL X \*x, R/W/M  
SULL GNCC JANIE R32T ET \*x, R/W/M

Shorthorn • BW: 2.3; WW: 17.0; YW: 26.5; MA: 5.3

- Bred to SULL Red Demand; due January 27, 2014.
- Paymaster did quite well on the Jane Mary cow line. This is a moderate, solid made breeding piece with the depth of rib and balanced EPD profile that you admire. The January calf due by Red Demand could be special.
- Strong cow families are built like this. Lot 22 is a Paymaster daughter on Eldorado, who is a 35L son and goes back to the Dunbeacon Venture x Jane Mary cow. Solid constructed brood cow pedigree.

## Bred Heifer Service Sires



**SULL  
Payday 1507**  
BW: -0.6; WW: 11  
YW: 21; MA: 3



**SULL Red  
Demand**  
BW: -0.8; WW: 6  
YW: 18; MA: 4

**KL Prime Time  
Paymaster x**  
BW: -1.2; WW: 13  
YW: 20; MA: 7





# The Good ...

# The Bad...

# The Ugly...

Date Night?  
Jesse Hoobler & Nate Tice



# Mona Lisa

cow family



**Mona Lisa 35L**



**Mona Lisa 34P**



**SULL Red Knight 2030**

Mona Lisa 10T son  
2012 National Champion  
Shorthorn Bull  
Grand Champion Bull,  
2013 NWSS  
Grand Champion Bull,  
2012 NAILE



**SULL GNCC Eldorado**  
Mona Lisa 35L son.



**SULL Demand Soundness**  
Mona Lisa 718 son.



**SULL GNCC Asset**  
Mona Lisa 35L son.



**SULL Primetime**

Mona Lisa 34P son.  
Three-time National Champion Shorthorn Bull  
Grand Champion Shorthorn Bull, 2010 NWSS  
Grand Champion Shorthorn Bull, 2009 NAILE  
Grand Champion Bull, 2009 American Royal  
Owned by Cannondale Farms & Primetime Syndicate



**23a****SULL Mona Lisa 2064 ET \*x**

01.25.12 Bred LE 2064 Polled Reg. # 4200473

CF SOLUTION X ET \*x,R/W/M CF TRUMP X \*x,Roan  
 NPS DESERT ROSE 004 \*x,R/W  
 JM VORTEC ET \*x,Roan  
 K-KIM MP MONA LISA 34P \*x,White  
 K-KIM TIA ET \*x,White

Shorthorn • BW: 5.0; WW: 18.5; YW: 33.4; MA: 1.2

- Bred to KL Primetime Paymaster; due January 27, 2014.
- A roan replica to her dam 34P. What a brood cow standout!
- Solution on 34P has created a lot of success in the pasture and show ring. The udders have been perfect and the structure and phenotype flawless. Lots 23A, B and C are all full sisters and stuck their first service to calve in January. They are full siblings to two-time Champion Bull, SULL Primetime, and National Champion SULL Stockman. Numerous full siblings are making customers happy all over the USA.

**23b****SULL Mona's Lisa 2157 ET \*x**

02.10.12 Bred LE 2157 Polled Reg. # 4200478

CF SOLUTION X ET \*x,R/W/M CF TRUMP X \*x,Roan  
 NPS DESERT ROSE 004 \*x,R/W  
 JM VORTEC ET \*x,Roan  
 K-KIM MP MONA LISA 34P \*x,White  
 K-KIM TIA ET \*x,White

Shorthorn • BW: 5.0; WW: 18.5; YW: 33.4; MA: 1.2

- Bred to SULL Payday; due January 27, 2014.
- The stouter muscled powerful built of the three full sisters.
- Solution on 34P has created a lot of success in the pasture and show ring. The udders have been perfect and the structure and phenotype flawless. Lot 23A, B and C are all full sisters and stuck their first service to calve in January. They are full siblings to two-time Champion Bull, SULL Primetime, and National Champion SULL Stockman. Numerous full siblings are making customers happy all over the USA.

**23c****SULL Mona Lisa Beauty ET \*x**

01.03.12 Bred LE 2073 Polled Reg. # 4200474

CF SOLUTION X ET \*x,R/W/M CF TRUMP X \*x,Roan  
 NPS DESERT ROSE 004 \*x,R/W  
 JM VORTEC ET \*x,Roan  
 K-KIM MP MONA LISA 34P \*x,White  
 K-KIM TIA ET \*x,White

Shorthorn • BW: 5.0; WW: 18.5; YW: 33.4; MA: 1.2

- Bred to KL Primetime Paymaster; due January 27, 2014.
- This is a maternal shaped, brood cow masterpiece.
- Solution on 34P has created a lot of success in the pasture and show ring. The udders have been perfect and the structure and phenotype flawless. Lot 23A, B and C are all full sisters and stuck their first service to calve in January. They are full siblings to two-time Champion Bull, SULL Primetime, and National Champion SULL Stockman. Numerous full siblings are making customers happy all over the USA.





**23d****SULL Pretty Woman 2302 \*x**

04.01.12 Bred LE 2302 Polled Reg. # 4200718

HILL HAVEN BOLD 4X x

CF GODL EAGLE 0019 \*x

MCQUEEN-VUES HAPPY GO LUCKY x

AF SL PRETTY WOMAN ET \*x, Roan

CF TRUMP X \*x, Roan

AR SU LU MEG 6037 ET \*x

**Shorthorn** • BW: 2.5; WW: 15.5; YW: 21.2; MA: 4.0

- Bred to KL Primetime Paymaster; due February 14, 2014.
- Another very popular Hill Haven Bold daughter. All red and out of the phenotypically pleasing Pretty Woman cow. Pretty Woman is one of the all time best Mona Lisa cows.
- I believe Robert Alden had great success with a full sib to this bred heifer. Special note: She is an April 1st heifer doing a nice job in calving in the middle of February to the popular Paymaster bull.

**23e****SULL Mona Lisa 2177 ET \*x**

01.10.12 Bred LE 2177 Polled Reg. # 4200714

SULL RIGHT DIRECTION ET \*x, R/W

CF TRUMP X \*x, Roan

NPS DESERT ROSE 004 \*x, R/W

K-KIM C.J. \*x, Red

JG CACTUS JACK C9340 \*x, Red

HR MONA LISA W684Y \*x, R/W/M

**Shorthorn** • BW: 4.1; WW: 22.2; YW: 35.6; MA: 2.9

- Bred to SULL Payday; due April 17, 2014.
- One of the most striking bred females in this offering. This will be a powerful brood cow deluxe as she matures out with a proven pedigree.
- 2177's dam K-Kim CJ has been an excellent source of genetics the past few years for us. She is the dam of SULL Demand Soundness who we have used quite heavily in our program for 2014 and the 2013 No Bull sale feature SULL Demand It going to Greenhorn Cattle Co.

**23f****SULL Mona's Solution ET \*x**

01.13.12 Bred LE 2199 Polled Reg. # 4200505

CF SOLUTION X ET \*x, R/W/M

CF TRUMP X \*x, Roan

NPS DESERT ROSE 004 \*x, R/W

K-KIM MONA LISA 164N ET \*x, Roan

JM VORTEC ET \*x, Roan

HR MONA LISA W684Y \*x, R/W/M

**Shorthorn** • BW: 4.8; WW: 21.3; YW: 35.9; MA: 1.8

- Bred to SULL Payday; due February 19, 2014.
- A spitting image of her dam 164N. This is one of those complete bred heifers that you just cannot find a fault in. This is why I appreciate the Solution cattle on Mona Lisa so well. They are fantastic production cattle and excel in the show ring.
- Mona's Solution's full sister was the Champion Shorthorn at the Illinois Beef Expo and Division Champion at NAILE for the Lock family.



**23g**

02.11.12

Bred

**SULL Mona Lisa Diva ET \*x**

LE 2098

Polled

Reg. # 4200475

CF TRUMP X \*x,Roan

PHILDON CUNIA DIVIDEND 7/8 \*x,R/W

CF CARMELE NG NG 158X \*x,R/W/M

SULL GNCC SALUTE 532R ET \*x,Roan

K-KIM MONA LISA 10T ET \*x,Red

K-KIM MONA LISA 157N ET \*,Red

Shorthorn • BW: 4.3; WW: 18.7; YW: 34.8; MA: 0.3

- Bred to SULL Payday; due January 27, 2014.
- A maternal sister to the National Champion, SULL Red Knight, that we will be exhibiting again this year at KC, NAILE and NWSS. Mona Lisa Diva's dam, 10T, has quickly become one of our most prominent donors here at Sullivan Farms.
- It's interesting to note that 10T is John Elder's favorite donor cow on the farm.

**23h**

01.29.13

Heifer

**SULL Mona Lisa Reward ET \*x**

LE 3289

Polled

Reg. # 4200674

SULL RED REWARD 9321 7/8 \*x,Red

TEGM RED ADVANTAGE 100T 3/4 \*x,Red

MCV MARGIE MILLION 503Q \*x,R/W/M

JM VORTEC ET \*,Roan

CYT TIAWANA 864U ET \*,White

K-KIM TIA ET \*,White

Shorthorn/MaineTainer • BW: 3.3; WW: 15.5; YW: 27.7; MA: 2.8

- This is a futuristic Shorthorn female. Huge bodied, beautiful profiling, all the beauty and grace you desire with the blend of powerhouse cow features. Take her to Louisville this year for the National Junior Heifer Show and she will compete in the MaineTainer and purebred Shorthorn Shows.
- Good ones built like this are hard to come by. The value Lot 23H will contribute after her show career will be considerable.



## *Fertility.*

*"Sullivan Farms had a tremendous breeding season with their Shorthorn heifers again this year. Using ultrasound to fetal age 88 heifers, 86 of them were confirmed pregnant in a 45 day breeding window. This is excellent by anyone of any breed's standards."*

- Toby Muller, Muller Reproductive Services

**Videos of sale cattle on-line October 5th at [www.youtube.com/SullivanShorthorn](http://www.youtube.com/SullivanShorthorn)**



# Hereford



## TCC MS Diana 01

One of the breeds popular champions. A daughter of Shelby 82, the granddaughter of Harley 438.



## LCC Miss Two Timin 'Harley' 438

One of the most prolific cows in the Hereford breed. A National Champion, dam of National Champion's and grand dam of National Champions.



## TCC RCS MS Harley Henrietta Z10

Grand Champion Polled Hereford Heifer, 2013 NWSS Jr Show and a Harley 438 daughter.



## TCC BPF MS Shelby Z03

Reserve Grand Champion Bred & Owned Hereford Heifer, 2013 National Junior Expo and a Shelby 82 daughter.



## JWG Miss Serendipity 1114

Grand Champion Horned Hereford Heifer, 2012 National Junior Expo Grand Champion Horned Hereford Heifer, 2013 NWSS



24

## SULL TCC Ms Serendipity 317

03.23.13 Heifer LE 317 Horned Reg. # 43412199

SHF WONDER M326 W18 ET  
 NJW 73S W18 HOMETOWN 10Y ET  
 NJW P606 72N DAYDREAM 73S  
 STAR TCF SHOCK & AWE 15SW ET  
 JWG MISS SERENDIPITY 1114  
 L1 DOMINETTE 04450

Horned Hereford • BW: 3.3; WW: 49; YW: 88; MA: 22; M&G: 46

- This is the sleeper of the sale. She spent her life at the ET facility alongside her first calf heifer dam.
- This March, Horned heifer is so complete and fault free just like her mother Serendipity. Serendipity was the 2012 Junior National Hereford Expo, Horned Hereford National Champion, the 2013 NWSS Junior Show Champion, and the 2013 NWSS Open Show Division Champion.
- Serendipity was considered by many as one of the best Horned heifers to ever show. Her natural calf answers any doubt.



**25**

03.13.13 Heifer LE 315 Polled Reg. # 43412197

**SULL TCC Ms Diana 315 ET**

NJW 73S W18 HOMETOWN 10Y ET  
 SHF WONDER M326 W18 ET  
 NJW P606 72N DAYDREAM 73S  
 CRR ABOUT TIME 743  
 TCC MS DIANA 01  
 TCC MISS SHELBY 82 ET

Polled Hereford • BW: 3.6; WW: 52; YW: 90; MA: 27; M&amp;G: 53

- Here she is! With four National Champions in her pedigree, we feel this could be one of the best to ever sell at SULL.
- 315 is bold sprung, stout, sound, cocky necked heifer that is beautiful haired.
- Can her success be better than her mother Diana, and her grandmother Shelby. We will find out soon!
- Retaining 1/2 embryo interest.

**26**

03.25.13 Heifer LE 316 Polled Reg. # 43412198

**SULL TCC Ms Diana 316 ET**

NJW 73S W18 HOMETOWN 10Y ET  
 SHF WONDER M326 W18 ET  
 NJW P606 72N DAYDREAM 73S  
 CRR ABOUT TIME 743  
 TCC MS DIANA 01  
 TCC MISS SHELBY 82 ET

Polled Hereford • BW: 3.6; WW: 52; YW: 90; MA: 27; M&amp;G: 53

- A full sister to the Lot 25 female. She has the ability to be as good as any female in the offering. She was brought in late from a satellite ET herd but has exploded. She could be a sale feature by October 20th.
- A cool marked, flat shouldered, quarter horse moving heifer that just needs time.
- 10Y has left his mark on our females. WOW!

**27**

02.27.13 Heifer LE 320 Polled Reg. # 43412192

**SULL TCC Ms Harley 320 ET**

NJW 98S R117 RIBEYE 88X ET  
 SHF RIB EYE M326 R117  
 NJW 9126J DEW DOMINO 98S  
 REMITALL ONLINE 122L  
 LCC TWO TIMIN 438 ET  
 H RST ROF REBA 28H

Polled Hereford • BW: 4.5; WW: 58; YW: 91; MA: 23; M&amp;G: 49

- Maybe one of the best 88X's to ever sell!
- This awesome heifer looks just like her picture - cowy! How much is this one worth as a donor cow in your pasture?
- Harley, her mother, was the 2006 National Champion Female and has left her mark as the most prolific producer of phenotype and power in our breed.







28

**SULL TCC Ms Harley 318 ET**

02.02.13 Heifer LE 318 Polled Reg. # 43412190

CRR ABOUT TIME 743

THM DURANGO 4037

LCC TWO TIMIN 438 ET

CRR D03 CASSIE 206

REMITALL ONLINE 122L

RST ROF REBA 28H

Polled Hereford • BW: 4.6; WW: 55; YW: 93; MA: 25; M&amp;G: 52

- Harley has done it again!
- This will be one of the most feminine heifers to sell this year. A must see female that will be one of the best to sell this fall.
- 318 will be a crowd stopper!



29

**SULL TCC Ms Harley 312 ET**

04.21.13 Heifer LE 312 Polled Reg. # 43412194

CRR ABOUT TIME 743

THM DURANGO 4037

LCC TWO TIMIN 438 ET

CRR D03 CASSIE 206

REMITALL ONLINE 122L

RST ROF REBA 28H

Polled Hereford • BW: 4.6; WW: 54.5; YW: 93; MA: 24.5; M&amp;G: 52

- A full sister to 318. This young April prospect might be one of the most intriguing heifers in the sale.
- 312 is cool marked, stout, great fronted and awesome haired.
- By sale time, this could be the best one.



30

**SULL TCC Ms Harley 310 ET**

02.13.13 Heifer LE 310 Horned Reg. # 43395185

NJW FHF 9710 TANK 45P

FHF 8403 STARBUCK 19H

LCC TWO TIMIN 438 ET

GV 579 VICTORIA 9710

REMITALL ONLINE 122L

RST ROF REBA 28H

Horned Hereford • BW: 5.7; WW: 53; YW: 94; MA: 21; M&amp;G: 53

- A 3/4 sister to Mitchell Tucker's Reserve Champion Bred & Owned Heifer at the 2013 Junior National Hereford Expo. She looks just like her!
- A beautifully marked, complete, fault free heifer that will be one of the best horned heifers to sell this year. Anywhere!

**Hereford Representatives**

Cody Lowderman.....309.313.2171  
 Monte W. Lowderman .....309.255.0110  
 Tom Bigilini .....417.827.8482  
 Mark McClintock.....325.650.4223  
 Tucker Cattle Co. - John, Jill, Blake & Mitchell Tucker .....308.530.5765



31

02.18.13

Heifer

LE 321

Polled

Reg. # 43412193

**SULL TCC Ms Harley 321 ET**

NJW FHF 9710 TANK 45P

FHF 8403 STARBUCK 19H

GV 579 VICTORIA 9710

REMITALL ONLINE 122L

LCC TWO TIMIN 438 ET

RST ROF REBA 28H

Polled Hereford • BW: 5.7; WW: 53; YW: 94; MA: 21; M&amp;G: 53

- A full sister to Lot 30.
- These Tank females are going to go down as intriguing breeding pieces. I would collect them out of these great cow lines.
- A tremendous show heifer prospect and another great cow prospect out of the infamous Harley.



32

03.30.13

Heifer

LE 314

Polled

Reg. # 43412196

**SULL TCC Ms Harley 314 ET**

ANKONIAN MIDAS 72

C-S PURE GOLD 98170

REMITALL ONLINE 122L

REMITALL ONLINE 122L

LCC TWO TIMIN 438 ET

RST ROF REBA 28H

Polled Hereford • BW: 5.2; WW: 53; YW: 91; MA: 23; M&amp;G: 49

- A full sister to Lot 33.
- A stout, big bellied, sound heifer that will stand a lot of competition.
- After her successful show career you will have one of the best donor cow prospects that you can find working for you. She is a full sister to the ever popular Shelby.



33

04.03.13

Heifer

LE 313

Polled

Reg. # 43412195

**SULL TCC Ms Harley 313 ET**

ANKONIAN MIDAS 72

C-S PURE GOLD 98170

REMITALL ONLINE 122L

REMITALL ONLINE 122L

LCC TWO TIMIN 438 ET

RST ROF REBA 28H

Polled Hereford • BW: 5.2; WW: 53; YW: 91; MA: 23; M&amp;G: 49

- A full sister to Lot 32.
- This is a great marked, stout heifer that looks like her National Champion sister, Shelby.
- A terrific chance to own a full sister to Shelby, the winningest show heifer in the breed. Is she better than Shelby??? Only time will tell!






**34**

03.29.13

Heifer

LE 319

Polled

Reg. # 43412191

**SULL TCC Ms Shelby 319 ET**

CRR ABOUT TIME 743

THM DURANGO 4037

CRR D03 CASSIE 206

ANKONIAN MIDAS 72

TCC MISS SHELBY 82 ET

LCC TWO TIMIN 438 ET

Polled Hereford • BW: 3.8; WW: 53; YW: 85; MA: 29; M&amp;G: 55

- A full sister to the 2012 National Champion female, Diana!
- This younger, classy female has a tremendous presence and will be a jackpot show heifer deluxe.
- Extremely fault free with the best hair in the sale.


**35**

03.24.13

Heifer

LE RTK 59A

Polled

Reg. # 43385779

**RTK Miss True Starlet 59A**

PHH PCC 812 TRUE GRIT 002

CRR ABOUT TIME 743

PHH 646 HEIDE 812

CRR ABOUT TIME 743

WMS 141T 743 ABOUT TIME 244W

WMS MIS AMBER 141T ET

Polled Hereford • BW: 3.5; WW: 45; YW: 74; MA: 18; M&amp;G: 41

- Sharp featured True Grit daughter that has the color pattern and phenotype to stand out in a crowd.
- Tremendous body capacity and a soft beautiful hair coat.
- Lot 35 can compete at the weekend jackpot shows and fit right in at the major Hereford events as well.


**36**

03.01.13

Heifer

LE 3245

Polled

Reg. # 43410201

**SULL Kessey 3245**

CRR ABOUT TIME 743

THM DURANGO 4037

CRR D03 CASSIE 206

STAR SS THUNDER LT 62J

STAR SPIRIDGE KESSEY 321L ET

SSF KEYSHA 949

Polled Hereford • BW: 3.5; WW: 45; YW: 74; MA: 18; M&amp;G: 41

- One of the standout show prospects in the sale. If you are looking for phenotype, structure and cow family here she is. Kessey was a special cow at Star Lake and she proves it again here.
- Kessey is balanced, well bred and has that photogenic look to always command your attention. From a tremendous cow family as well.



# Angus



**Steele Miss Kymra Katy K006 'Sugar'**

Dam of champions and dam of Lot 41 & 42.



**Hara's Dixie Erica 09**

Powerfully bred donor  
and dam of Lot 37.



**8079**

A many time champion at  
Ak-Sar-Ben, Iowa State Fair,  
etc. and a daughter of  
K006 Sugar.



Champion Angus Heifer, 2013 Iowa State Fair.  
A daughter of K006 Sugar. Look at Lots 41, 42 & 43.



**SLL Miss Kymra Katy R547**

Dam of Lot 43 from the K006 Sugar cow family.



**SULL Stockman 7302 (898 CL)**

A clone to the famed Stockman 898 female.  
The mother to all the National Champion blue roan  
heifers we have won with at the National Junior  
Shorthorn Show, Louisville and Denver.

**37**

04.23.13 Heifer

**Hara's SULL Dixie Erica**

LE 3A Polled Reg. # pending

DAMERON FIRST CLASS

EXG RS FIRST RATE S903 R3

DAMERON NORTHERN MISS 3114

WAR COWBOY UP 3102

DCC DIXIE ERICA 001

HARA'S DIXIE ERICA 09

PB Angus • BEPD: +3.3; WEPD: +55; YEPD: +87; MILK: +26;  
\$W: +32.73; \$F: +26.71; \$G: +17.44; \$B: +52.87; MARB: +.13; RE: +.25

- National quality standout! This well bred Dameron First Class daughter has the completeness, structure and phenotype to be a major contender.
- It's no secret how good the Dameron First Class cattle are, but this fantastic April heifer gets backed-up by one heck of a Cowboy Up daughter, DCC Dixie Erica 001. She is the power cow from Hara's. Owned with Hara Farms.






**38**
**SULL Saugahatchee Pride 3220**

04.14.13 Heifer LE 3220 Polled Reg. # +17588910

 LEACHMAN SAUGAHATCHEE<sup>3000C</sup>  
 N BAR EMULATION EXT  
 LEACHMAN B C 7100

 SULL STOCKMAN 7306  
 TC STOCKMAN 365  
 PRIDE 886 S D G

 PB Angus • BEPD: +4.4; WEPD: +35; YEPD: +64; MILK: +17;  
 SW: +19.04; \$F: +9.87; \$G: +8.52; \$B: +42.06; MARB: -.04; RE: +39

- The Saugahatchee cattle have long set the standard for championship Angus genetics. Lot 38 is complete, stout and a different kind of Angus. This is the first time we have flushed our highly successful SULL Stockman cow to Angus sires.
- To learn more about the SULL Stockman 898 cow turn to Lot 7. Her daughters have been the Grand Champion ShorthornPlus Female at the 2012 NAILE and National ShorthornPlus Champion Female. At the 2012 National Junior Heifer Show, Hannah Winegardner exhibited another Grand Champion ShorthornPlus Female, another full sister. In the past few years, Joseph O'Sullivan, James Sullivan and Nick Sullivan have all shown National Champion ShorthornPlus Females that were Vegas x Stockman 898's. All of the popular blue roan's you have seen at the shows over the years have been from SULL Stockman.


**39**
**SULL Miss Pride 3240**

05.11.13 Heifer LE 3240 Polled Reg. # +17588912

 LEACHMAN SAUGAHATCHEE<sup>3000C</sup>  
 N BAR EMULATION EXT  
 LEACHMAN B C 7100

 SULL STOCKMAN 7306  
 TC STOCKMAN 365  
 PRIDE 886 S D G

 PB Angus • BEPD: +4.4; WEPD: +35; YEPD: +64; MILK: +17;  
 SW: +19.04; \$F: +9.87; \$G: +8.52; \$B: +42.06; MARB: -.04; RE: +39

- A super phenotype heifer here that has a unique striking look. She closely resembles her dam SULL Stockman.
- To learn more about the SULL Stockman 898 cow turn to Lot 7. Her daughters have been the Grand Champion ShorthornPlus Female at the 2012 NAILE and National ShorthornPlus Champion Female. At the 2012 National Junior Heifer Show, Hannah Winegardner exhibited another Grand Champion ShorthornPlus Female, another full sister. In the past few years, Joseph O'Sullivan, James Sullivan and Nick Sullivan have all shown National Champion ShorthornPlus Females that were Vegas x Stockman 898's. All of the popular blue roan's you have seen at the shows over the years have been from SULL Stockman.


**40**
**SULL Stockman Pride 3224**

03.23.13 Heifer LE 3224 Polled Reg. # +17588917

 LEACHMAN SAUGAHATCHEE<sup>3000C</sup>  
 N BAR EMULATION EXT  
 LEACHMAN B C 7100

 SULL STOCKMAN 7302  
 TC STOCKMAN 365  
 PRIDE 886 S D G

 PB Angus • BEPD: +4.4; WEPD: +35; YEPD: +64; MILK: +17;  
 SW: +19.04; \$F: +9.87; \$G: +8.52; \$B: +42.06; MARB: -.04; RE: +39

- Not only are these Saugahatchee x Stockman daughters fantastic show prospects, but we think they have a lot of value as breeding pieces as well. Check out the feet and structure of this young lady.
- To learn more about the SULL Stockman 898 cow turn to Lot 7. Her daughters have been the Grand Champion ShorthornPlus Female at the 2012 NAILE and National ShorthornPlus Champion Female. At the 2012 National Junior Heifer Show, Hannah Winegardner exhibited another Grand Champion ShorthornPlus Female, another full sister. In the past few years, Joseph O'Sullivan, James Sullivan and Nick Sullivan have all shown National Champion ShorthornPlus Females that were Vegas x Stockman 898's. All of the popular blue roan's you have seen at the shows over the years have been from SULL Stockman.



41

**SULL SLL Keymura Katy 3037**

05.02.13 Heifer LE 3037 Polled Reg. # pending

SILVEIRAS CONVERSION 8064  
 BT CROSSOVER 758N  
 EXG SARAS DREAM S609 R3  
 O G L COLD WAR 601 X044  
 STEELE MISS KYMRA KATY K006  
 STEELE MISS G712

**PB Angus** • BEPD: +5.2; WEPD: +59; YEPD: +102; MILK: +22;  
 SW: +27.85; SF: +44.11; SG: +31.17; SB: +84.01; MARB: +.46; RE: +.49

- A broody, yet feminine K006 "Sugar" daughter here. The popular Conversion bull clicked well with her.
- K006 "Sugar" has been a standout cow for Steele Land & Cattle. She has produced daughters that have been champion's twice at the Iowa State Fair, Ak-Sar-Ben, and many shows across the United States including the 2013 Iowa State Fair Champion for the Young family. Owned with Steele Land & Cattle.



42

**SULL SLL Keymura Katy 3067**

05.09.13 Heifer LE 3067 Polled Reg. # pending

PLAINVIEW LUTTON E102  
 EXAR LUTTON I831  
 PLAINVIEW PRIDE C123  
 O G L COLD WAR 601 X044  
 STEELE MISS KYMRA KATY K006  
 STEELE MISS G712

**PB Angus** • BEPD: +5.2; WEPD: +48; YEPD: +76; MILK: +23;  
 SW: +21.58; SF: +17.63; SG: +20.84; SB: +71.95; MARB: +.26; RE: +.11

- A royal bred, phenotypically flawless full sister to many breed greats. You will appreciate this once you see in her real life.
- K006 "Sugar" has been a standout cow for Steele Land & Cattle. She has produced daughters that have been champion's twice at the Iowa State Fair, Ak-Sar-Ben, and many shows across the United States including the 2013 Iowa State Fair Champion for the Young family. Owned with Steele Land & Cattle.



43

**SULL SLL Keymura Katy 3064**

05.24.13 Heifer LE 3064 Polled Reg. # pending

PLAINVIEW LUTTON E102  
 EXAR LUTTON I831  
 PLAINVIEW PRIDE C123  
 WAR COWBOY UP 3102  
 SLL MISS KYMRA KATY R547  
 STEELE MISS KYMRA KATY K006

**PB Angus** • BEPD: +3.9; WEPD: +49; YEPD: +78; MILK: +26;  
 SW: +25.59; SF: +19.49; SG: +25.38; SB: +75.38; MARB: +.33; RE: +.29

- Quite the show prospect here. Complete, eye appealing, and faultless in her design. Check out the picture of her many time champion dam on page 65.
- K006 "Sugar" has been a standout cow for Steele Land & Cattle. She has produced daughters that have been champion's twice at the Iowa State Fair, Ak-Sar-Ben, and many shows across the United States including the 2013 Iowa State Fair Champion for the Young family. Owned with Steele Land & Cattle





**44**

03.05.13 Heifer

**SULL Miss Hadley Maye**

LE 1262 Polled Reg. # pending

EXAR LUTTON 1831

PLAINVIEW PRIDE C123

BON VIEW NEW DESIGN 878

SDS QUEEN 152L

PLAINVIEW LUTTON E102

ZVACEK'S QUEENS 518

PB Angus • BEPD: +3.0; WEPD: +45; YEPD: +74; MILK: +24;  
SW: +25.73; SF: +16.69; SG: +24.53; SB: +49.20; MARB: +.36; RE: +.20

- A stunning profile with extra depth of body and structure to make her a standout show prospect.
- Lot 44 and 45 two full sisters that are owned with Adam Behmer are out of the 126 cow that has been so successful here. A strong argument could be made on which one of these two full sisters is the best one.

**45**

01.27.13 Heifer

**SULL Miss Drama Queen**

LE 1261 Polled Reg. # pending

EXAR LUTTON 1831

PLAINVIEW PRIDE C123

BON VIEW NEW DESIGN 878

SDS QUEEN 152L

PLAINVIEW LUTTON E102

ZVACEK'S QUEENS 518

PB Angus • BEPD: +3.0; WEPD: +45; YEPD: +74; MILK: +24;  
SW: +25.73; SF: +16.69; SG: +24.53; SB: +49.20; MARB: +.36; RE: +.20

- Stout, powerful, January, Lutton daughter that has the extra dimension and mass to be a force to be reckoned with in the show ring and donor pasture.
- Lot 44 and 45 two full sisters that are owned with Adam Behmer are out of the 126 cow that has been so successful here. A strong argument could be made on which one of these two full sisters is the best one.

# Red Angus

**46**

03.19.13 Heifer

**SULL GEF 25Y Robin 394A**

LE 394A Polled Reg. # pending

PIE CODE RED 9058

GEFB CANYON LADY 2146

PIE CODE RED 9058

GEFB 2102 RUBY LADY 2862

GEFB CODE REDMAN 25Y

GEF CODE ROBIN 88Y

Red Angus • BEPD: -1.8; WEPD: 66; YEPD: 98; MILK: 16

- Attractive made, sleek features and tremendously sound Red Angus female that can go the distance.
- Lot 46 is extremely green but she won't be overlooked by good cattlemen. She is built right and as she matures she will become one heck of a Red Angus female. Owned with David Geffert



47

02.03.13

Heifer

**SULL GEF Hannah 312A**

LE 312A

Polled

Reg. # pending

RED SSS OLY 554T

RED CROWFOOT OLE'S OSCAR

RED SSS GOLD EDGE 77R

PIE CODE RED 9058

GEF CODE ROBIN 87Y

GEFB MISS SNOWBIRD 505

Red Angus • BEPD: -3.9; WEPD: 64; YEPD: 105; MILK: 21

- Here's a powerhouse constructed heifer in the Red Angus division. You have to admire this heifer's femininity and mass combination.
- This Oly daughter has the unique blend of power and beauty. She has donor cow and show potential. Owned with David Geffert.



# Charolais/ Charolais Composite

**Ivory Angel**

One of the most popular Charolais champions of all times.  
Her daughters sell as Lot 49, 50 & 51.



Grand Champion Purebred Female,  
2012 National Junior Charolais Show  
and full sister to Lot 48.

48

03.16.13

Heifer

**SULL/JM MS JLow**

LE 316

Polled

Reg. # EF1168557

TR MR FIRE WATER 5792RET

THOMAS OAHE WIND 0772ET P

THOMASWISSERSWEET1764ET

TR MS ICEBUCKET 6681S

THOMAS MR ICE BUCKET

THOMAS MS WIND 2527M

Charolais • CE: -5.4; BW: 2.0; WW: 29; YW: 50; MILK: 4; MCE: -2.0

- The Lot 48 heifer we feel will be one of the best Charolais heifers to sell this year. She has a perfect hind leg, has overall smoothness in her body composition and her fault free design makes you have confidence that she will get better every day.
- Not only is this heifer special in her own right, she is backed up by a power packed cow family. Her full sister was a Grand Champion Purebred Female at the 2012 National Junior Charolais Show and was also Supreme Overall Breeds at Tulsa. Owned with Stephanie Bear.





**49**

01.27.13 Heifer

**SULL Ivory Angel 3203**

LE 3203 Polled Reg. # ERF706885

MONOPOLY

HEAT WAVE 1CM

W T F RUTH MEDINA

TR PZC MS IVORY ANGEL 0711 ET

TR MR FIRE WATER 5792R ET

THOMAS MS IMPRESSIVE 0641

Charolais Composite

- Tremendous cow features and a stylish futuristic look. Lot 49 should be very competitive at the major shows across the country. Her residual value as an industry leading donor cow will be very, very valuable. th pending
- TR PZC MS Ivory Angel has created as much excitement in the Charolais breed as any female in recent memory. She steamed rolled to all the major championships in NAILE and NWSS and topped the National Charolais show at \$77,000. Legendary cow families always pay you back. Owned with James Sullivan.

**50**

01.18.13 Heifer

**SULL Ivory Angel 3984**

LE 3984 Polled Reg. # ERF706884

MONOPOLY

HEAT WAVE 1CM

W T F RUTH MEDINA

TR PZC MS IVORY ANGEL 0711 ET

TR MR FIRE WATER 5792R ET

THOMAS MS IMPRESSIVE 0641

Charolais Composite

- We couldn't be more excited about this group of Charolais Composite females. Take a look at lot 50's foot, structure and brood cow features. Major, major donor cow. th pending
- TR PZC MS Ivory Angel has created as much excitement in the Charolais breed as any female in recent memory. She steamed rolled to all the major championships in NAILE and NWSS and topped the National Charolais show at \$77,000. Legendary cow families always pay you back. Owned with James Sullivan.

**51**

04.12.13 Heifer

**SULL Ivory's Angel 3366**

LE 3366 Polled Reg. # ERF706886

MONOPOLY

HEAT WAVE 1CM

W T F RUTH MEDINA

TR PZC MS IVORY ANGEL 0711 ET

TR MR FIRE WATER 5792R ET

THOMAS MS IMPRESSIVE 0641

Charolais Composite

- This is the type of female that you would like to keep yourself. Not only will she show highly competitive, but the dollars she will create after her successful show career will be substantial. Tie into this impressive Ivory Angel daughter. th pending
- TR PZC MS Ivory Angel has created as much excitement in the Charolais breed as any female in recent memory. She steamed rolled to all the major championships in NAILE and NWSS and topped the National Charolais show at \$77,000. Legendary cow families always pay you back. Owned with James Sullivan.



# MaineTainer

**52**

04.02.13

## **SULL/SC Pretty Woman 3975A**

Heifer LE 3975A Polled Reg. # 437822

IRISH WHISKEY

BK ICE PICK 472J

NTC 615 EVER READY

MEYER 9488

SULL PRETTY WOMAN 262SC

COMMERCIAL/ANGUS

MaineTainer

- Holy smokers! Power house constructed Irish Whiskey daughter. You know the value here. She will make you proud in the show ring and the pasture. pha pending
- 262 SC is a tremendous Meyer 9488 donor female. She is the dam of Lot 52, 53 and 54. You can appreciate her consistency after reviewing the elite quality of these three full sisters. Now you understand why John Sachau calls her the best cow he owns.



**53**

04.12.13

## **SULL/SC Pretty Woman 3976A**

Heifer LE 3976A Polled Reg. # 437821

IRISH WHISKEY

BK ICE PICK 472J

NTC 615 EVER READY

MEYER 9488

SULL PRETTY WOMAN 262SC

COMMERCIAL/ANGUS

MaineTainer

- The sleek made combination heifer of the three sisters. The value of these Irish Whiskey daughters has been established time and time again. There is no better one in club calf production. pha pending
- 262 SC is a tremendous Meyer 9488 donor female. She is the dam of Lot 52, 53 and 54. You can appreciate her consistency after reviewing the elite quality of these three full sisters. Now you understand why John Sachau calls her the best cow he owns.



**54**

05.17.13

## **SULL/SC Pretty Woman 3974A**

Heifer LE 3974A Polled Reg. # 437823

IRISH WHISKEY

BK ICE PICK 472J

NTC 615 EVER READY

MEYER 9488

SULL PRETTY WOMAN 262SC

COMMERCIAL/ANGUS

MaineTainer

- The youngest and perhaps the neatest made of the three full sisters. Great neck and shoulder setting with a little white splashed up for her own personality. She will always be a contender in the May division. pha pending
- 262 SC is a tremendous Meyer 9488 donor female. She is the dam of Lot 52, 53 and 54. You can appreciate her consistency after reviewing the elite quality of these three full sisters. Now you understand why John Sachau calls her the best cow he owns.





# Maine-Anjou



## BNWZ Beauty 408W

A past Louisville champion out of the predictable Boss Beauty 84M female.



## KS Erica 36T

One of the winningest Maine-Anjou females of all time. Grand Champion Maine-Anjou Female at the American Royal, NAILE and NWSS.



**55**

03.16.13 Heifer

## JSUL Erica 3216

Reg. # 437406

LFCC UNSTOPPABLE 727X

KS ERICA 36T

MONOPOLY

LFCC LADY K 727T

SLC SOONER 101M

WCC ERICA 36R

Maine-Anjou

- An overwhelming show heifer and cow prospect. Her design is ideal for the modern Maine-Anjou female. The pedigree, the profile and the quality to make an impact. thf/phaf
- KS Erica 36T is one of the winningest Maine-Anjou females of all time. Not only was she the Grand Champion Maine-Anjou at American Royal, NAILE and NWSS, but her dam was a many time major show champion herself. Lots 55, 56, 57 and 58 are presented to you with three generations of the breed's elite genetics.



**56**

04.14.13 Heifer

## JSUL Erica 3202

Reg. # 437408

LFCC UNSTOPPABLE 727X

KS ERICA 36T

MONOPOLY

LFCC LADY K 727T

SLC SOONER 101M

WCC ERICA 36R

Maine-Anjou

- What a deep bodied ground sow. Cow features galore with enough angularity to be a top shelf show heifer. thf/phaf
- KS Erica 36T is one of the winningest Maine-Anjou females of all time. Not only was she the Grand Champion Maine-Anjou at American Royal, NAILE and NWSS, but her dam was a many time major show champion herself. Lots 55, 56, 57 and 58 are presented to you with three generations of the breed's elite genetics.



**57**

05.09.13

Heifer

**JSUL Erica's Class 3197**

LE 3197A Polled Reg. # 437409

LFCC UNSTOPPABLE 727X

MONOPOLY

LFCC LADY K 727T

SLC SOONER 101M

KS ERICA 36T

WCC ERICA 36R

Maine-Anjou

- A classy made prospect that has the faultless design and structure that enables her to get better with age. thf/phaf
- KS Erica 36T is one of the winningest Maine-Anjou females of all time. Not only was she the Grand Champion Maine-Anjou at American Royal, NAILE and NWSS but her dam was a many time major show champion herself.

**58**

02.11.12

Bred

**JSUL Erica 2301**

LE 2301Z Polled Reg. # 437722

SLC SOONER 101M

DMCC LIMITED EDITION 4F

KS ERICA 36T

SLC SOONER 101M

KS ERICA 36T

WCC ERICA 36R

Maine-Anjou

- Bred to I-80; due January 27, 2014.
- Wide bodied brood cow prospect backed up by a tremendous cow family and bred to calve in January to the proven I-80 bull. thf/phaf
- KS Erica 36T is one of the winningest Maine-Anjou females of all time. Not only was she the Grand Champion Maine-Anjou at American Royal, NAILE and NWSS but her dam was a many time major show champion herself.

**59**

05.21.13

Heifer

**JSUL Princess Beauty**

LE 3179A Polled Reg. # 437411

LFCC UNSTOPPABLE 727X

MONOPOLY

LFCC LADY K 727T

SLC SOONER 101M

BNWZ BEAUTY 408W

BOSS BEAUTY 84M

Maine-Anjou

- Tremendous depth of rib and eye appeal in this Beauty 408W daughter. Take note of this outstanding females foot and fleshing ability. thf/phaf
- BNWZ Beauty 408W is the popular NAILE Champion and one of the best daughters yet of breed legend, Boss Beauty 84M. She is a building block for the Maine-Anjou breed and the type of cow families we believe in at Sullivan Farms.

**60**

05.13.13

Heifer

**JSUL Beauty Queen 3176**

LE 3176A Polled Reg. # 437410

LFCC UNSTOPPABLE 727X

MONOPOLY

LFCC LADY K 727T

SLC SOONER 101M

BNWZ BEAUTY 408W

BOSS BEAUTY 84M

Maine-Anjou

- You have to appreciate the striking appearance and cow features that lot 60 combines. She should be a force to be reckoned with in the May division. Lots 59 and 60 are two excellent full sisters. You are going to have to tell us which one you feel is the best. thf/phaf
- BNWZ Beauty 408W is the popular NAILE Champion and one of the best daughters yet of breed legend, Boss Beauty 84M. She is a building block for the Maine-Anjou breed and the type of cow families we believe in at Sullivan Farms.





Chi

**JSUL Who Dat 1602**

Supreme Champion Female, 2012 NAILE  
Supreme Champion Female,  
2012 American Royal

**JSUL I Da Man**

Who Da Man x SULL HS 46  
Popular AI sire.

**JSUL Dreams Come True**

Supreme Champion Female, 2009 NAILE  
Supreme Champion Female,  
2009 Indiana State Fair 4-H Show



61

02.22.13 Heifer

**JSUL Dream Lady 3204**

LE 3204 Polled Reg. # 367776

ASHW WHO DA MAN

WHO MADE WHO 411F

ASHW CA X MA X SM 55

BHCS HEAT SEEKER 23

JSUL DREAM MAKEER HS46

JSUL MA X AN X 6651

Chi • BW: 3.8; WW: 33.6; YW: 54.8; MILK: 9.3

- Are you looking for a national level show prospect that is backed up by a cow family that is proven to produce? Then here she is. This one will pay you back in the show ring and the pasture.
- Lot 61 is a full sib to JSUL Dreams Come True, the popular 2009 NAILE Supreme Champion and the I Da Man bull, one of the hottest new AI sires on the market.



62

04.02.13 Heifer

**JSUL Who Da Gal 3265**

LE 3265 Polled Reg. # 367922

ASHW WHO DA MAN

WHO MADE WHO 411F

ASHW CA X MA X SM 55

HEAT SEEKER

JSUL BIG DREAMS 6640

JSUL MA X AN X 6651

Chi • BW: 3.0; WW: 38.6; YW: 63.8; MILK: 10.7

- Lean and green with the opportunity to get better each day. This female carries the classic Who Da Man look and is out of our best black cow on the farm 6640. the
- If you polled the farm crew, 6640 would be their favorite black cow on the farm. Since the day she was born she was special. She transforms that into her progeny. She is the dam of JSUL Who Dat 1602, Luke Elders very special 2012 NAILE and 2012 American Royal Supreme Champion Female.



**63**

04.21.13 Heifer LE 3271 Polled Reg. # 367921

**JSUL Knock Out 3271**

ASHW WHO DA MAN

WHO MADE WHO 411F

ASHW CA X MA X SM 55

HEAT SEEKER

JSUL BIG DREAMS 6640

JSUL MA X AN X 6651

Chi • BW: 3.0; WW: 38.6; YW: 63.8; MILK: 10.7

- Affectionately named Knock Out for her stunning eye appeal and presence. A full sister to one of the best show heifers that has ever crossed the tan bark of any breed and yet Lot 63 does not take a back seat to her sister. thc
- If you polled the farm crew 6640 would be their favorite black cow on the farm. Since the day she was born, she was special. She transforms that into her progeny. She is the dam of JSUL Who Dat 1602, Luke Elders very special 2012 NAILE and 2012 American Royal Supreme Champion Female.

**64**

03.16.13 Heifer LE 02A Polled Reg. # pending

**WLK JSUL Diamond**

ASHW WHO DA MAN

WHO MADE WHO 411F

ASHW CA X MA X SM 55

GOET MIM'S GIRL

GOET I-80

Chi/MaineTainer • BW: 4.0; WW: 36.9; YW: 60.9 MILK: 10.1

- A striking female with that, look at me attitude. This heifer has the opportunity to be shown at two junior nationals. She is dual registered as a Chi and MaineTainer. th pending
- We all know the demand out there for Who Da Man females not only as a show heifer, but their tremendous breeding pieces as well. Lot 64 is backed up by a tremendous Monopoly cow as well buy with confidence. Owned with the Walker Family.



# ChiAngus

**65**

02.16.13 Heifer LE 1300 Polled Reg. # 367671

**JSUL/CAFC MS Brilliance A 1300**

SAV BRILLIANCE 8077

SAV BISMARCK 5682

SAV BLACKCAP MAY 5270

RDD MISS NUTONE K303 1CA

HCK NUTONE 1CA

RDD ANGUS 624

ChiAngus • BW: 1.8; WW: 49.8; YW: 97.0; MILK: 19.5

- We feel this could be one of the top ChiAngus heifers of the year. She possesses such a great body capacity, overall smoothness of design and structure to be a contender at Junior Nationals and built long term enough to be reckoned with at NAILE and Fort Worth
- ChiAngus females of this quality are few and far between. Lot 65 is backed up by the tremendous AI sire SAV Brilliance 8007 and her dam, RDD Miss Nutone is a top Dieter Bros donor cow.





# Simmental/ Foundation Simmental

A many-time champion for the Udell Family, including Grand Champion Foundation Simmental Female, 2013 NWSS. Her full sister sells as Lot 66.



Grand Champion Simmental Female, 2012 American Royal and a daughter of SS Baby Breath. A maternal sister to Lot 73.



**SS Baby Breath**

Dam of Lot 73.

**SS Miss Jesse Joker**

Dam of Lot 72.



**HPF Lucy N902**

Dam of Lot 74.



**66**

05.10.13 Heifer

MR HOC BROKER

WAG HAIRIETTA 9145J CAX

**Hara's SULL Princess 2A**

LE 2A Polled Reg. # pending

SVF STEEL FORCE S701

JM BF H25

WHO MAD WHO 411F

ANGUS

Foundation Simmental •

BW: 2.8; WW: 60.6; YW: 85.6; MILK: 17.3; API: 72.4

- This may be one of the best Foundation Simmentals we've seen in quite some time. Phenotypically she is flawless and better yet when she goes in motion her structure is not only impeccable but it's her strength. Make an investment right here, it will pay you back in dividends.
- This female is a full sister to the many-time Champion heifer for the Udell family and the Walker families Reserve Champion at Junior Nationals. We all know Hara Farms raises some of the best stock in the country by stacking generations of great ones. Owned with Hara Farms



**67**

03.05.13 Heifer LE 378A Polled Reg. # 2762060

**GEF SULL Miss Voltage**

SS/PRS HIGH VOLTAGE 244X

HTP/SVF DURACELL T52

KENCO MILEY COTTONTAIL

GEFFERT FOUNDATION COW 99X

Foundation Simmental •

BW: 1.5; WW: 53.8; YW: 75.8; MILK: 19.9; API: 93.7

- You've got to like the quality of this High Voltage female. She has that extra mass yet combines it with a smooth, sound package.
- Great haired with the ability to dominate with her stoutness at the weekend jackpot shows and the structure to be a force at the National events. Owned with the Geffert Family.

**68**

01.27.13 Heifer LE 300A Polled Reg. # 2757685

**Ford Farms JSULL Mis 300A**

FORD FARMS STAR STUDDERD

SVF STAR POWER 5802

JBS MISS G. DESIGN 505M

FORD FARMS MISS 532R

PVF-BF BF26 BLACK JOKER

003K

Foundation Simmental •

BW: 1.6; WW: 53.2; YW: 80.8; MILK: 27.6; API: 87.5

- A Star Studded daughter that has a tremendous amount of depth of rib. Stout, age advantage January with a great set of feet and legs. This is a 5/8 Simmental and 3/8 Angus female.
- 532R is the powerful donor dam sired by Black Joker. She is a leading lady of the Ford Farms Simmental operation. Owned with Ford Farms

**69**

03.23.13 Heifer LE 3972 Polled Reg. # pending

**BAF JSULL Miss Driving Bando**

WAGR DRIVER 706T

CNS DREAM ON L186

3C MELODY M668 BZ

HSAF BANDO 1961 DAUGHTER (PB ANGUS)

PB ANGUS

Foundation Simmental •

- Impeccable style structure and flawless overall makeup. We really appreciate this Driver daughter and think she has a very bright future. She has no holes, an indication that she will grow into something special as she matures.
- The donor dam for Lot 69 is a powerful purebred Angus HSAF Bando 1961 daughter. She was a sale feature at one of John Sachau's cow sales. Owned with Al Bruhn.






**70**

03.02.13

Heifer

**B&L/JSULL Lady Pride 16A**

RE 16A

Polled

Reg. # 2717179

JF AMERICAN PRIDE 0987X

MR NLC UPGRADE U8676

WLE CRUISIN SUSAN T26

JF LADY 865U

WSJ ENCORE

ESM52

**PB Simmental** • BW: 3.2; WW: 70.7; YW: 104.2; MILK: 20.0; API: 106.8

- A show stomping look in a purebred Simmental package. She possesses a unique opportunity to transform a unique, photogenic look into purebred Simmental cattle.
- JF Lady 865U is a top leading donor for Jansen Farms in Iowa. Her sire American Pride strengthens an already impressive pedigree. Owned with Brent Tolle and Kip Bonnell


**71**

04.16.13

Heifer

**GTWY/JSUL Joy 7A**

LE 7A

Polled

Reg. # 2752540

JF AMERICAN PRIDE 0987X

MR NLC UPGRADE U8676

WLE CRUISIN SUSAN T26

REN TOUCH OF JACK R350

H3C REN BLACK JACK M223

REN MIDNIGHT POTION 3912

**PB Simmental** • BW: 2.5; WW: 71.4; YW: 112.1; MILK: 26.8; API: 124.0

- A well balanced purebred Simmental heifer with a good neck, good hip, plenty of body and good feet and legs.
- Her dam is a Black Jack daughter who is a top producing Simmental cow at Gateway Genetics. She produced the top selling Simmental bull in 2011 and the top gaining bull in 2012.
- The Black Jack females are by far the most consistent Simmental cows at Gateway Genetics and by adding the look and power of American Pride, this heifer should have a lot of future to her. Owned with Gateway Genetics.


**72**

04.28.13

Heifer

**GTWY/JSUL Jessie 8A**

LE 8A

Polled

Reg. # 2752541

SVF STEEL FORCE S701

CNS DREAM ON L186

SVF SHEZA BEAUTY L901

SS MISS JESSE JOKER

R&amp;R THOR 5332

SS MARIAH

**PB Simmental** • BW: 2.1; WW: 64.4; YW: 91.4; MILK: 16.9; API: 127.1

- This young purebred Simmental heifer is out of the great Steel Force and a top donor at Platte Valley Simmentals.
- The dam was the high selling female at the 2011 Nebraska Cattlemen's Classic and is a granddaughter to the dam of Felts Next Big Thing, a very popular Simmental sire that has produced several National Champions and numerous winners.
- This heifer has great things ahead of her as she matures. Owned with Gateway Genetics



**73**

04.02.13

Heifer

**PZC SULL Baby Brooke**

LE Polled Reg. # pending

MR HOC BROKER

SVF STEEL FORCE S701

JM BF H25

SS GOLDMIEN L42

SS BABY'S BREATH P035

SVF BREATH TAKER J130

PB Simmental •

BW: 2.4; WW: 55.5; YW: 80.6; MILK: 29.2; API: 105.95

- Sired by the National Champion Broker and out of the breed leading Baby's Breath donor.
- This April heifer will compete on a National level
- Her 3/4 sister was Grand Champion Simmental Female at the 2012 American Royal for Kylee Sigmon. Owned with Polzin Cattle

**74**

03.16.13

Heifer

**Ryan Queen Lucy A190**

LE A190 Polled Reg. # 2761226

CNS PAYS TO DREAM T759

CNS DREAM ON L186

MLF BL JESSIE K336

HPF MR BOTTOMLINE 808K

HPF QUEENS LUCY N092

BCS QUEEN OF HEARTS

PB Simmental • BW: 1.6; WW: 57.7; YW: 84.3; MILK: 17.2; API: 125.9

A daughter of the past NWSS Champion HPF Queens Lucy N092 that was a major pillar in creating a breeding program for Hudson Pines Farm of New York and Bramlet Simmentals of Illinois.

- A190 is athletic built; sound structured soft middled, and beautiful from the profile with a splash of white on her head. This truly is the complete package as this flawless phenotype is coupled with an impressive set of EPD's boasting an API of 125.9. Owned with Shane Ryan.



## Join Us!

We invite everyone to join us on Saturday evening, October 19th for a complimentary prime rib meal and drinks, a casino Vegas night and the Funding the Future Junior National Fundraiser.

*A very special Thank You for all who have showed interest in our program and have attended our Maternal Legends Sale.*

**Videos of sale cattle on-line October 5th at [www.youtube.com/SullivanShorthorn](http://www.youtube.com/SullivanShorthorn)**



# EMBRYO PACKAGES

Eggs and Semen are not exportable out side of the continental US.

Call Summer Pieper at 712.269.5925 for embryo and semen shipment.

All eggs and semen will be available at the sale sight to pick-up. Shipping is the responsibility of the buyer.

## Purebred Shorthorn Embryo Packages



SULL Sara's Sable



SULL Sassy Sara



SULL Red Blood



SULL Red Stallion



SULL Sable's Luck



SULL Dede's Sable



SULL Dazzling Dolly



WHR LS Dolly D 2116



Royalla Lady Margie J6196



Marellan Ferrari

lot  
75a

### FOUR Sexed HEIFER Embryos

2 Grade 1 and 2 Grade 2, IVF embryos

SULL RED BLOOD X SULL SARA'S SABLE

lot  
75b

### FOUR Sexed HEIFER Embryos

2 Grade 1 and 2 Grade 2, IVF embryos.

SULL RED BLOOD X SULL SARA'S SABLE

Not very often do you get to purchase eggs from a Louisville champion that produced another Louisville champion. Now, add in the amazing Red Blood bull!! Great heifer calves are coming from him. To be implanted by a Trans Ova Technician.

lot  
76

### THREE Embryos

3 Grade 1, IVF embryos

SULL RED REWARD X RL CUMBERLAND 5N35

The dam of Red Blood, Red Stallion, and Muscle Man. We have never had a heifer calf out of her and Red Reward. These are full sibs to the breeds superstars, Red Blood and Red Stallion. These embryos are worth a lot in the heifer or bull pen. To be implanted by a Trans Ova Technician.

lot  
77

### FOUR Sexed HEIFER Embryos

4 Grade 2, IVF embryos

HD SWAGGER X MILESTONE SABLE 01

Four generations of National Champions in the Milestone Sable 01 cow family. Talk about awesome consistency. Sable 01 is the dam of the 2012 Louisville Champion ShorthornPlus Female and National Champion Shorthorn Female, SULL Dede's Sable. Look at Milestone Sable progeny in this sale Lot 14. To be implanted by a Trans Ova Technician.

lot  
78a

### THREE Embryos

Conventional embryos

SULL RED ROCK X SULL DAZZLING DOLLY

lot  
78b

### THREE Embryos

Conventional embryos

SULL RED ROCK X SULL DAZZLING DOLLY

SULL Dazzling Dolly is a young donor just getting started here. She is a direct Dolly D daughter that is one of Dazzler's best heifers we have owned. Her full sister topped Cagwin's Sale to Horseshoe Creek. The Red Rocks will resemble the Myrtle Bo bred in this sale, Lot 2A. To be implanted by a Trans Ova Technician.

lot  
79a

### FOUR Embryos

Conventional embryos

MARELLAN FERRARI X ROYALLA LADY MARGIE J6196

lot  
79b

### FOUR Embryos

Conventional embryos

MARELLAN FERRARI X ROYALLA LADY MARGIE J6196

Royalla Margie J6196 is an outstanding, soundly made, eye catching donor cow. She is the fifth generation of Margies born in Australia in the Royalla herd. There are lots of top Aussie genetics in her pedigree. Marellan Ferrari was the winner of the Supreme Beef Exhibit at the 2005 Sydney Royal Show from 2000 head. Predictability is built in with the direct sire line of five generations (M.Ferrari, R.Dollars, M.Wallet, R.Ultra and M.Super Dazzler) bred by the Job family in their Royalla and Marellan herds.



# ShorthornPlus Embryo Packages



## **SULL Stockman 7302 (898 Clone)**

The entire ShorthornPlus embryo offering is out of our SULL Stockman 898 (clones). Wow, all heifer embryos are being offered. Nothing has been as predictable or dominating in the ShorthornPlus business. Each and every year, for the past seven years, daughters have won two major shows or more a year. The sire doesn't matter - they are good out of every bull we have mated to her. Check out her daughters in this offering, Lot 7.

**80**

### **FOUR Sexed HEIFER Embryos**

4 Grade 1, IVF embryos  
DF VEGAS heifer X SULL STOCKMAN 7306 (cL 898)  
To be implanted by a Trans Ova Technician.

**81**

### **THREE Sexed HEIFER Embryos**

4 Grade 1, IVF embryos  
SULL RIGHT DIRECTION heifer X SULL STOCKMAN 8404 (cL 898)  
To be implanted by a Trans Ova Technician.

**82a**

### **FOUR Sexed HEIFER Embryos**

4 Grade 1, IVF embryos  
SULL BEEF heifer X SULL STOCKMAN 7294 (cL 898)

**82b**

### **FOUR Sexed HEIFER Embryos**

4 Grade 1, IVF embryos  
SULL BEEF heifer X SULL STOCKMAN 7294 (cL 898)  
To be implanted by a Trans Ova Technician.

**83a**

### **FOUR Sexed HEIFER Embryos**

3 Grade 1 and 1 Grade 2, IVF embryos  
SULL ROAN BLAST X SULL STOCKMAN 8409 (cL 898)

**83b**

### **FOUR Sexed HEIFER Embryos**

3 Grade 1 and 1 Grade 2, IVF embryos  
SULL ROAN BLAST X SULL STOCKMAN 8409 (cL 898)  
To be implanted by a Trans Ova Technician.

**84a**

### **FOUR Sexed HEIFER Embryos**

4 Grade 1, IVF embryos  
RC WG DAMN PROUD heifer X SULL STOCKMAN 8409 (cL 898)

**84b**

### **FOUR Sexed HEIFER Embryos**

4 Grade 1, IVF embryos  
RC WG DAMN PROUD heifer X SULL STOCKMAN 8409 (cL 898)  
To be implanted by a Trans Ova Technician.

## **Daughters of Stockman 898**



SULL Blue Bunny



SULL Blue Baby 2001



SULL Blue Mamba



SULL Blue



SULL Blue Baby 2001



SULL Pure Hottie

**85**

### **TWO Sexed HEIFER Embryos**

2 Grade 1, IVF embryos  
EXHILE heifer X SULL STOCKMAN 7302 (cL 898)  
To be implanted by a Trans Ova Technician.



# Club Calf Embryo Packages



Supreme Champion Female,  
Iowa State Fair, sired by SULL Blue



GCC Whiskey 5139



605R



SULL Blue



JSUL Who Dat 1602



JSUL Dreams Come True



SULL Miss Direction



SULL Breathtaker 7152



Heat Wave

<sup>lot</sup>  
**86a**

## **FOUR Embryos**

Conventional embryos  
SULL BLUE X GCC WHISKEY 5139

**86b**

## **FOUR Embryos**

Conventional embryos  
SULL BLUE X GCC WHISKEY 5139

This is a powerful mating. SULL Blue is the sire of great ones with limited use. 5139 is one of our best Irish Whiskey females. We have some calves of this mating coming this Spring 2014 that we are excited about. Conventional embryos. Note: A SULL Blue daughter brought \$60,000 at recent Cates Farms sale.

<sup>lot</sup>  
**87a**

## **THREE Sexed HEIFER Embryos**

Conventional embryos  
SULL BLUE heifer X 605R

**87b**

## **THREE Sexed HEIFER Embryos**

Conventional embryos  
SULL BLUE heifer X 605R

A genetic merger of the great heifer sire SULL Blue out of the Triple Crown award winning Cassie. No Red Angus female has dominated the major's quite like Cassie did. Expect heifers. We used Blue heifer semen on the flush.

<sup>lot</sup>  
**88a**

## **THREE Embryos**

Conventional embryos  
WHO MADE WHO X SULL WHO DA MAN 50 (Who Da Man Dam)

**88b**

## **THREE Embryos**

Conventional embryos  
WHO MADE WHO X SULL WHO DA MAN 50 (Who Da Man Dam)

Full sibs to the Who Da Man bull. A bull or heifer, you know the value here. This is one of the best genetics packages of the year!

<sup>lot</sup>  
**89a**

## **FOUR Sexed HEIFER Embryos**

4 Grade 1, IVF FEMALE embryos  
MONOPOLY MONEY X SULL BREATHTAKER 7152

**89b**

## **FOUR Sexed HEIFER Embryos**

4 Grade 1, IVF FEMALE embryos  
MONOPOLY MONEY X SULL BREATHTAKER 7152

SULL Breathtaker 7152 is the dam of Kane Aegerters multiple National Champion Female. Monopoly Money has done a heck of a job at siring heifers much like his sire Monopoly, but with a tad more bone and look. To be implanted by a Trans Ova Technician.

<sup>lot</sup>  
**90a**

## **FOUR Sexed MALE Embryos**

4 Grade 1, IVF MALE embryos  
HEAT WAVE (CL) X KRICK WHO 27

**90b**

## **THREE Sexed MALE Embryos**

4 Grade 1, IVF MALE embryos  
HEAT WAVE (CL) X KRICK WHO 27

Krick Who 27 is a phenomenal Who Made Who cow that we recently added to our Club Calf program. She is a big egg producer and because of this we decided to share some with you. We will have a large offering of full sibs to these embryos in 2014. She is the dam to one of the best steers ever seen by many acclaimed cattlemen that Jason Krick sold in his pasture sale. To be implanted by a Trans Ova Technician.



# Hereford Embryo Packages

lot  
91

## FOUR Sexed HEIFER Embryos

4 Grade 1, IVF embryos

RIBEYE 88X X STAR KK HSSF VALEDICTORIAN 298S

A powerful, powerful genetic merger here. 88X is the sire of the popular Denver Champion C Eye Candy 2079 and the world record setting bull C Miles McKee. Valedictorian is one of the most popular females to hit the Hereford tanbark in recent years. This multiple major show champion will be a lead donor here in 2014. To be implanted by a Trans Ova Technician.



C Eye Candy 2079



Star KK HSSF Valedictorian 298S

lot  
92a

## FOUR Embryos

Conventional embryos

LSW WCC ABOUT TIME X06 (TRUE GRIT) X TCC MISS LEXUS 84

lot  
92b

## FOUR Embryos

Conventional embryos

LSW WCC ABOUT TIME X06 (TRUE GRIT) X TCC MISS LEXUS 84

The first time this many embryos have ever been offered at auction from this great cow family. Lexie is a 3/4 sib to Shelby and was Reserve Champion Horned Heifer in the 2010 NWSS Junior show. Truly a power cow like her mother Harley. True Grit is considered by many to be the best About Time son ever. This mating could be incredible. Take advantage of this rare opportunity!



LSW WCC About Time X06 (True Grit)



TCC Miss Lexus 84 ET

lot  
93

## FOUR Sexed HEIFER Embryos

4 Grade 1, IVF embryos

NJW 73S W18 HOMETOWN 10Y ET X JWG MISS SERENDIPITY 1114

The Denver and Junior National Hereford Expo Champion has made an excellent cow. Check out her first calf who sells as Lot 24, a full sib to these embryos. We really like our 10Y progeny. Look at the success in this years sale. We had three 10-Y daughters and they all raised to the cream of the crop. To be implanted by a Trans Ova Technician.



JWG Miss Serendipity 1114



Lot 24

# Special Feature Lot

lot  
94

## SEXED Heifer PREGNANCY

NJW 73S W18 HOMETOWN 10Y ET X STAR KKH SSF OLIVIA 15U

Due 11.05.13. Recip tag is 12368.

This is the only fall 10Y x Olivia we have and we thought we would offer it as a sale feature. Olivia is what we thought she would be - flawless in production and in profile. Fundamentally a perfect female. Hometown 10Y did well for us in this sale offering. If you are interested in raising the best in Hereford genetics, this is as good as it gets.



Star KKH SSF Olivia 15U



# Semen

Rare semen not available on the open market.



SULL Red Blood



Lot 1A



SULL Red Knight 2030



SULL Red Knight 2030



SULL Blue Magic



CF 212



Lot 10C



SULL Red Reward 9321



SULL Red Traveler



SULL Bo's Traveling

<sup>lot</sup>  
**95a**

## **SULL Red Blood ET \*x4181029 - Sexed HEIFER**

Selling 5 straws of SEXED HEIFER.

**95b**

## **SULL Red Blood ET \*x4181029**

Selling 5 straws of conventional.

**95c**

## **SULL Red Blood ET \*x4181029**

Selling 5 straws of conventional.

One of the best breeding bulls to ever walk the pastures at Sullivan Farms. Look at this progeny in this sale. The best sire group in our 2013 calf crop. We couldn't be more impressed with SULL Red Blood's progeny in limited use. This is his first calf crop and he hits a home run. This is the first offering of semen on SULL Red Blood.

<sup>lot</sup>  
**96**

## **SULL Red Knight 2030 ET \*4190557**

Selling 5 straws of conventional.

Take a look at this red stud on display sale day. Deep red, young breed superstar. If you are interested in quality from the hoof up, this bull will improve your best donor cows. SULL Red Knight will again be our lead show bull in 2013-2014 show season. Semen is not available on the open market.

<sup>lot</sup>  
**97a**

## **SULL Blue ET \*xar44266**

Selling 5 straws of conventional.

**97b**

## **SULL Blue ET \*xar44266**

Selling 5 straws of conventional.

The deceased sire has had some stunning individuals. We expect this deceased sire of great ones to build on his popularity. SULL Blue sired the 2012 Iowa State Fair Supreme Champion Female. She was as good as any State Fair Champions in recent memory. Blue was also the sire of an awesome, \$60,000 heifer at the 2013 Cates Farms sale. There is less than 45 straws of SULL Blue conventional. It is scarce, and we compare his future to what Who Da Man has done recently.

<sup>lot</sup>  
**98a**

## **SULL Red Reward 9321 \*xar48841**

Selling 5 straws of conventional.

**98b**

## **SULL Red Reward 9321 \*xar48841**

Selling 5 straws of conventional.

We have an impressive group of 2013 progeny by SULL Red Reward. We used him heavily on the Mona Lisa 35L & 34P line as well as the Rosemary line. This deceased super star's progeny have done well. Red Reward is a dominate new, young sire. At Denver he sired two calf division champions on the hill and was dominate in the yards with sons SULL Red Blood and SULL Red Stallion.

<sup>lot</sup>  
**99**

## **SULL Traveler 9807 ET \***

Selling 5 straws of conventional.

Traveler did an outstanding job in his first calf crop. SULL Bo's Traveling was a popular Third Overall Female at Shorthorn Junior Nationals. Another daughter, SULL Red Traveler, was recently named Reserve Champion Female at the Iowa State Fair Open Shorthorn Show. SULL Traveler 9807 himself was the triple crown award winning champion at Kansas City, Louisville and Denver. He is the residential herd sire at Sullivan Farms. Semen not available on the open market.



**100a** <sup>lot</sup> **SULL Master of Rose \*x4176292**  
Selling 5 straws of conventional.

**100b** **SULL Master of Rose \*x4176292**  
Selling 5 straws of conventional.

Grand Champion Bull, '12 American Royal and Reserve Grand Champion Bull, '13 NWSS

We have an outstanding group of fall heifer calves by SULL Master of Rose. He is sound, fluid in his movement and look. His combination of fresh genetics, EPD's, and phenotype can't be matched. He has returned home to Dunlap to take up residential herd sire duties.



SULL Master of Rose



SULL Roan Rosemary

**101a** <sup>lot</sup> **SULL Roan Blast 0301 \*416927 - Sexed HEIFER**  
Selling 5 straws of SEXED HEIFER.

**101b** **SULL Roan Blast 0301 \*416927 - Sexed HEIFER**  
Selling 5 straws of SEXED HEIFER.

**101c** **SULL Roan Blast 0301 \*416927**  
Selling 5 straws of conventional.

Our 2013 calf crop has an abundance of great Roan Blast x SULL Stockman 898 heifer calves. This bull is a cow changer. He brings power in a smooth package. The Roan Blast cattle have exceeded our expectations. This moderate roan powerhouse has the rare ability to transmit structural soundness in a massive smaller framed package. His progeny speak well for himself in this sale and is one of the featured lots. At the recent KOLT Sale was yet another Roan Blast daughter that was a sale feature.



SULL Roan Blast



SULL Lady Stockman 229,  
Roan Blast daughter

**102a** <sup>lot</sup> **SULL Primetime \*x4141570**  
Selling 5 straws of conventional.

**102b** **SULL Primetime \*x4141570**  
Selling 5 straws of conventional.

A \$27,000 Primetime daughter was a many time champion for Logan Plate. SULL Primetime is a two-time National Champion Shorthorn Bull and is now siring champions. We have a nice representation of Primetime daughters in this sale. One of the top lots in the recent KOLT Sale, consigned by Norman and Ripberger, was an extra special Primetime daughter. The females sired by this popular champion will be outstanding in the show ring and pasture. His dam 34P is the perfect uddered female.



SULL Primetime



Many time champion for the Plate Family.

**103a** <sup>lot</sup> **SULL Muscle Man \*4157800 - Sexed HEIFER**  
Selling 5 straws of SEXED HEIFER.

**103b** **SULL Muscle Man \*4157800 - Sexed HEIFER**  
Selling 5 straws of SEXED HEIFER.

If you are looking to add power, mass and yet maintain structural soundness Muscle Man is the bull for you. Tom Bryan of Cannondale Farms has been more than impressed with his Muscle Man calves. Heifers or bulls, Muscle Man is a good investment. Owned with Cannondale Farms



SULL Muscle Man



SULL Red Blood,  
a maternal brother to Muscle Man

**104a** <sup>lot</sup> **SULL GNCC Asset \*4099888**  
Selling 5 straws of conventional.

**104b** **SULL GNCC Asset \*4099888**  
Selling 5 straws of conventional.

**104c** **SULL GNCC Asset \*4099888**  
Selling 5 straws of conventional.

Asset semen is in very limited supply, and he is no longer producing due to a severe injury. The breeds super sire produced the \$40,000 white heifer for Cates Farms. He is also the sire of Kane Aegerter's heifer that had a very successful 2012 and 2013 show season and the Reid's family's two time Denver division champion. Consigned by Aegerter Marketing Services



SULL Fancy Pants Bo



SULL Sage's Bo





KL Prime Time Paymaster



SULL Payday



SULL Red Rockette Bo



Lot 2A



SULL Red Demand 9329



SULL Demand Soundness



WHR Code Red



GCC Augusta Pride 134Y



TM Dazzler 54P



SULL Dazzling Mirage 81



SS Revival



SS Lakeside Jane Mary 694

## <sup>lot</sup>105a **KL Prime Time Paymaster x4162111**

Selling 5 straws of conventional.

## <sup>lot</sup>105b **KL Prime Time Paymaster x4162111**

Selling 5 straws of conventional.

KL Prime Time Paymaster is our lead heifer bull at Sullivan Farms and the sire of two of the most popular bulls in the Shorthorn breed today - SULL Payday and SULL Pay Attention. KL Prime Time Paymaster offers unique blend of proven phenotype structure and look in an excellent EPD profile. It is a special blend that is rare in any breed. Flush your Trump, Solution, etc. daughters to him. You will get the show heifers or bulls that are in demand today.

## <sup>lot</sup>106a **SULL Red Rock 9351 \*xar48844**

Selling 5 straws of conventional.

## <sup>lot</sup>106b **SULL Red Rock 9351 \*xar48844**

Selling 5 straws of conventional.

His progeny was a hit at last year's Maternal Legends Sale. An attractive outcross bull. The sire of Derek Humphrey's Louisville Division Champion Calf, SULL Red Rockette Bo. Red Rock is deceased due to a major stifle injury that occurred last summer. Take a look at the Lot 2A female in this sale, it will give you an indication of what Red Rock can do.

## <sup>lot</sup>107a **SULL Red Demand 9329 ET \*xar49219**

Selling 5 straws of conventional.

## <sup>lot</sup>107b **SULL Red Demand 9329 ET \*xar49219**

Selling 5 straws of conventional.

SULL Red Demand 9329 has done a tremendous job as a birth weight reducer in a dark red, soggy, sound package. Good cattle that survive and prosper in any climate or arena. His sons, SULL Demand Soundness and SULL Demand It, have been sale features the past two years at No Bull. Derek Jungles has had many top sons in Durham's for Denver.

## <sup>lot</sup>108a **WHR Code Red 8217 \*x4142024 - Sexed HEIFER**

Selling 5 straws of SEXED HEIFER.

## <sup>lot</sup>108b **WHR Code Red 8217 \*x4142024 - Sexed HEIFER**

Selling 5 straws of SEXED HEIFER.

WHR Code Red continues to impress us. His calves are born easy and vigorous. Sound, functional cattle that perform. Outcross genetics with a classy show ring look. Code Red has done a tremendous job for Gana/Nisley. His daughters have been sale features at the last two No Bull sales.

## <sup>lot</sup>109a **TM Dazzler 54P \*x4083177 - Sexed HEIFER**

Selling 5 straws of SEXED HEIFER.

## <sup>lot</sup>109b **TM Dazzler 54P \*x4083177 - Sexed HEIFER**

Selling 5 straws of SEXED HEIFER.

## <sup>lot</sup>109c **TM Dazzler 54P \*x4083177 - Sexed HEIFER**

Selling 5 straws of SEXED HEIFER.

The maternal magic of this deceased legend is evident in prominent cow families across the breed. His outcross genetics with phenotype and mothering ability inspire his continued popularity.

Owned by Aegerter Marketing Services

## <sup>lot</sup>110 **Dunbeacon Venture x3934578**

Selling 5 straws of conventional.

If you are interested in producing outcross Shorthorn brood cows, there is none better than the king cow maker. This deceased maternal giant imported from Australia is one of the most consistent cow makers in Shorthorn history.

Owned by Aegerter Marketing Services



**111a** *lot* **SR Red Riders Drive \*x3874207**

Selling 5 straws of conventional.

**111b** *lot* **SR Red Riders Drive \*x3874207**

Selling 5 straws of conventional.

The old man gets more popular each year. With limited cattle registered, he sired three breed leaders in Miss V8 Mollie Jo, ASA Show Heifer of the Year; SULL Riding Mirage 626, Denver Division Champion; and Studers herd bull, SULL Red Raider 6807. The fact is he is more right for the times then ever before. SR Red Riders Drive will continue to grow in popularity.



DFS Margie 6109



Miss V8 Mollie Joe

**112a** *lot* **Eionmor Marquis 86G x3986086**

Selling 5 straws of conventional.

**112b** *lot* **Eionmor Marquis 86G x3986086**

Selling 5 straws of conventional.

**112c** *lot* **Eionmor Marquis 86G x3986086**

Selling 5 straws of conventional.

Marquis is the outcross calving ease sire that we have used successfully in our herd. He has been propagated strongly in master cattlemen, Dale Studer's program. I believe Marquis is the base to some of Dale's best cows. Unfortunately Marquis passed just as his popularity started to rise. There is less then 50 straws in inventory on this bull.



Eionmor Marquis 86G



JSF Marquis

**113** *lot* **SULL GNCC Salute 532R \*x - Sexed HEIFER**

Selling 5 straws of 5 mL SEXED HEIFER.

Volumes of champions sired by this proven breed leader Salute 532R.



SULL Salute Destiny



SULL Dolly 8268

## Maine & Club Calf Semen

**114a** *lot* **Irish Whiskey**

Selling 5 straws of conventional.

**114b** *lot* **Irish Whiskey**

Selling 5 straws of conventional.

**115a** *lot* **Eye Candy - Sexed HEIFER**

Selling 5 straws of SEXED HEIFER.

**115b** *lot* **Eye Candy - Sexed HEIFER**

Selling 5 straws of SEXED HEIFER.

**115c** *lot* **Eye Candy - Sexed BULL**

Selling 5 straws of SEXED BULL.

**115d** *lot* **Eye Candy - Sexed BULL**

Selling 5 straws of SEXED BULL.

**115e** *lot* **Eye Candy**

Selling 5 straws of conventional.

**115f** *lot* **Eye Candy**

Selling 5 straws of conventional.

The popular Trausch Farms deceased Club Calf super star.

**116** *lot* **Sooner**

Selling 2 straws of conventional.

**117a** *lot* **Friction**

Selling 5 straws of conventional.

**117b** *lot* **Friction**

Selling 5 straws of conventional.

**117a** *lot* **Heat Seeker**

Selling 5 straws of conventional.

**117b** *lot* **Heat Seeker**

Selling 5 straws of conventional.

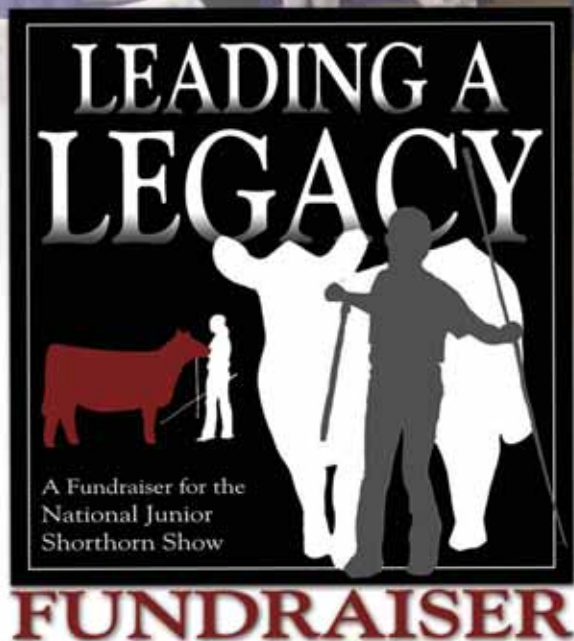
**118a** *lot* **Bleeding Purple**

Selling 5 straws of conventional.

**118b** *lot* **Bleeding Purple**

Selling 5 straws of conventional.





**Saturday, October 19, 2013**

at Sullivan Farms, Dunlap, Iowa

6:00 PM - Prime Rib Meal at Sullivan Farms

7:00 PM - Leading A Legacy, Junior National Fundraiser Sale

7:30 PM - Vegas Night, Casino fun chips

**\*\*Keep your eyes open, we may even have a Michael Jackson and Marilyn Monroe sighting.**

**100% of the proceeds goes towards the National Junior Heifer Show.**

**50% goes to the 2014 show in Louisville, KY; 50% goes to the 2015 event.**

**Special Guests Include ...**

ASA Board Members, ASA National Lassie Queen Jessica McCall & ASA National Alternate Lassie Queen Megan Dragstrem, & ASA Staff.

**Sale Day Phones ...**

Montie Soules.....918.645.4322	Frank Sullivan, Auctioneer ....612.860.6665
Kent Jaecke.....405.408.2440	Alan Sears.....970.396.7521
Jeff Aegerter .....402.641.4696	Darryl Rahn .....217.473.1124
Don Cagwin.....217.341.7552	Jake Alden .....402.660.9048
Gwen Crawford .....402.616.5556	Audrey Hambright .....402.660.9049
Joseph O'Sullivan .....612.868.8580	Roger Sullivan .....612.860.0158

If interested in bidding, please contact any of the ringmen or visit [LiveAuctions.tv](http://LiveAuctions.tv)  
Thank you to all of the above for donating your time.

**Event Chairmen ...** Advisor, Gwen Crawford & Jr Auction Chairman, Joseph O'Sullivan

**Special Thank You ...** A special Thank You to everyone who donated to support this sale and the legacy of the National Junior Shorthorn Show. Your support and generosity is greatly appreciated. Thank You to *Shorthorn County* for advertising this event.

Also, a big Thank You to John Sullivan for supplying the meal and hosting this event and providing the Leading a Legacy catalog.



**Watch It LIVE!! ...** Catch candid interview's by Livestock World's anchorman, Chris Terembes, live starting Saturday, October 19th at 4:00 pm broadcast, on [www.LiveAuctions.tv](http://www.LiveAuctions.tv).

**Celebrity Terry Jordan will be attending!**



This special event will be on an episode of Stock Show Confidential on RFD-TV.





AJSA extends a very special Thank You to last years donors, bidders and buyers on making the first Annual Leading A Legacy Fundraiser a HUGE success.

Maternal Legends



# 1 Foundation Female - SULL Augusta's Legacy ET

\*x4200377 • 04.18.13 • RWM • Polled

SULL GNCC ELDORADO ET \*x CF TRUMP X \*x, Roan  
K-KIM MONA LISA 35L \*  
GCC AUGUSTA PRIDE 3127 \* WHR SONNY 8114 ET \*x  
SS AUGUSTA PRIDE 3127

Thank you Sullivan Farms, John, Dede, Sara and Sage, for your generous donation.

VALUE - Priceless

A special lady for a special event. This isn't just a donation heifer, Augusta's Legacy is a high quality individual that can compete at the toughest shows in the country. She is from one of the best cow families in the Shorthorn breed. Her dam 3127's progeny have averaged over \$12,000. Help the juniors and help your program with this genetic breeding piece.







## 2 Shorthorn Country Center Spread

Thank you *Shorthorn Country* for your donation

[www.shorthorncountry.net](http://www.shorthorncountry.net)

**VALUE - \$1,530**

A full color, two-page center spread in any issue of *Shorthorn Country*. No additional charges for graphics. A very special thank you to the *Shorthorn Country* and Don Cagwin for all his support he has shown the Junior's through the years. Including the free advertisements on this very sale, Leading A Legacy. Let's give the *Shorthorn Country* staff, Darryl, Cindy and Tracy a big thank you for the expansive and tremendous coverage of the 2014 National Junior Heifer Show in Louisville, Kentucky.



## 3 Sunglo Show Feeds or Supplement Package

Thank you Sunglo for your donation.

[www.showmasterfeeds.com](http://www.showmasterfeeds.com)

**VALUE - \$1,000**

250 pounds of Right Now Mineral or 40 bags of Sunglo Premium Cattle Feed (1 ton). This \$1,000 gift certificate is redeemable at any Sunglo dealer.

Recently, two powerful brands became one - Showmaster and Sunglo. You can now rely on Sunglo show calf feeds to support growth and development, help reduce the risk of digestive upsets and help create the desire visual appearance at show time.



## 4 Chicago Bulls Tickets

Thank you Mark Gordon, Rockin G Land & Cattle, Illinois, for your donation.

**Estimated VALUE - \$600**

Four tickets to the infamous Chicago Bulls! Donated by a long time, strong supporter of the Junior association and ASA Board member, Mr. Mark Gordon. Any home, regular season game is available.



## 5 Pallet Shelves built by ASJA Board Member

Thank you AJSA President Ashley Vogel & Brian Kiesewetter for your donation

**VALUE - Handcrafted**

As seen on Pinterest, this is a "pallet shelf" made by hand rather than made from an old pallet. This very rustic piece would be a nice addition to anyone's country home. See this beautiful piece of work on display sale day. One thing we know, the Vogel family is talented in the arts and design field.



## 6 Show Supply Package

Thank you Sullivan Supply/Stock Show University for your donation

[www.sullivanupply.com](http://www.sullivanupply.com)

**VALUE - \$1,500**

Includes Sullivan's 5' Upright Treadbright Dolly Box (\$965 value) fully loaded with Sullivan show supplies, Sullivan's Turbo Fan (\$265 value) and a complete Sullivan's Smart Series package.

A special thank you to Sullivan Supply and Stock Show University. They are always generous sponsors of the American Junior Shorthorn Association.





## 7 NBA & Mystic Lake Casino & Hotel Package

Thank you Terry Stade Farms, Shakopee, Minnesota, for your donation

[www.mysticlake.com](http://www.mysticlake.com)

**VALUE - \$800**

Enjoy two courtside seats with full access to the Lexus club at a Minnesota Timberwolves basketball game. These tickets also include valet parking and a free meal before the game. Game to be mutually agreed upon with donor.

No need to worry about a hotel expense either. Spend the night at Minnesota's most all-inclusive entertainment destination which is located just 25 minutes southwest of the Twin Cities! Enjoy a two-night get-a-way and stay at Mystic Lake Casino and Hotel. Each of the 600 luxurious rooms and suites at Mystic Lake feature full room service and the ultimate in comfort. Other amenities include golf, spa, shopping and entertainment.

The Meadows at Mystic Lake is a par-72 championship golf course just steps away from the casino! As a guest at our hotel, you also have access to the 230,000 sq. ft. Dakota! Sport and Fitness center, which includes bowling and arcade.



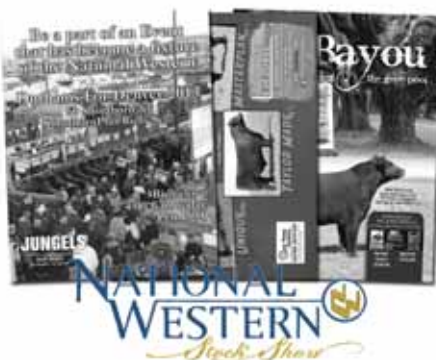
## 10 One Free Conventional In-Vitro Fertilization Cycle

Thank you Trans Ova Genetics, Sioux Center, Iowa, for your donation

[www.transova.com](http://www.transova.com)

**VALUE - \$750**

Breeders who choose to use IVF technology have the opportunity to obtain more offspring from valuable females in their herd, similar to the benefit of embryo transfer. Many breeders do not realize however, the additional benefits when using IVF, such as the ability to sex-sort previously frozen semen as well as use sorted frozen semen and conventional semen in the IVF fertilization process.



## 8 National Western Stock Show Program Covers

[www.shorthorn.org](http://www.shorthorn.org)

**VALUE - Priceless**

This year's National Show is at the 2014 National Western Stock Show in Denver, Colorado. The recognition you will receive from your program being on the back cover of the program is endless.

8A - Shorthorn Pen Show Back Cover (Saturday)

8B - Shorthorn Junior Show Back Cover (Sunday)

8C - Shorthorn P.A.C.E. Show Back Cover (Monday)



## 9 Metal Art w/ Easel

Thank you Joan Waldron for your donation

**VALUE - Handcrafted**

An 11 x 14 photo has been converted onto a metal art piece. The photo was taken by Joan Waldron of Wildwood Farms and was featured on the November 2011 cover of *Shorthorn Country*. A special thank you to Joan and Tom, long time Shorthorn breeders and strong supporters of the Shorthorn breed.



## 11 Legacy Livestock Photo Shoot

Thank you Legacy Livestock Imaging, Charles & Heidi Anderson, for your donation

[www.legacylivestockimaging.com](http://www.legacylivestockimaging.com)

**VALUE - \$1,200**

Show day, farm visits or the picture pen nobody captures the moment like Legacy Livestock Imaging. We are excited to donate a one day agricultural photo shoot. We will provide eight hours of photography, transportation to the location or nearest major airport, and a file of edited images. Valid in the continental United States only. Must be used by October 20, 2014. Buyer is responsible for meals, overnight accommodations and secondary transportation.



## 12 Showtimes Advertisement

Thank you to the Reid Family, Colorado, for your donation.

[www.theshowtimesmagazine.com](http://www.theshowtimesmagazine.com)

**VALUE - \$650**

One-page, four color advertisement. Design is included. The *Showtimes* junior livestock magazine is owned and operated by the Reid family of Colorado. They have grown into a prominent national junior livestock magazine business from the love their family has for stock shows. The Reid family is also becoming Shorthorn enthusiasts and sure enjoyed Shorthorn Junior Nationals.





## 13 Purina Show Feed Package

Thank you Purina Mills for your donation

[www.purinadifference.com/showchow](http://www.purinadifference.com/showchow)

**VALUE - \$500**

This is a \$500 gift certificate redeemable at any Purina Mills feed store location. It can be used on any show feed or highly successful Purina supplements.

Show Chow is the choice of champions and is fed by many of the top cattle operations in the country today.



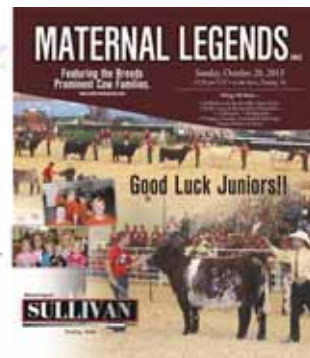
## 14 Iowa State BASKETBALL Package

Thank you Cyclone Trace Cattle Co,  
John Hagie, Clarion, Iowa for your donation

[www.cyclonetrace.com](http://www.cyclonetrace.com)

**VALUE - \$500**

When it comes to supporters in the Shorthorn breed, John Hagie is a strong believer. John also happens to be a tremendous Iowa State booster. Expect excellent seats with four tickets to any Iowa State basketball game - BUYERS CHOICE. Package includes a gift certificate to a gourmet restaurant in Ames. When asked what the value of these tickets would be, John said Priceless ... the privilege of watching a Big 12 match-up should be classified as priceless.



## 15 National Junior Heifer Show Program Cover

[www.shorthorn.org](http://www.shorthorn.org)

**VALUE - Priceless**

Outstanding opportunity! This will be the cover of the 2014 National Junior Shorthorn Show program for both days, Friday and Saturday. This can be a special ad featuring your program in front of all juniors in American. The ad will need to be clean lined and approved by the ASA staff. This ad will be approximately 2/3 of the cover. The other 1/3 will be needed for show logo, date, etc.



## 16 Stockshow Confidential Commercial

Thank you Stockshow Confidential  
for your donation.

[www.stockshowconfidential.com](http://www.stockshowconfidential.com)

**VALUE - \$1,750**

Stockshow Confidential has taken RFD-TV by storm becoming one of the highest rated shows on RFD-TV. This package includes one, thirty-second commercial on your program to be aired on Stockshow Confidential, RFD-TV. Buyer will supply PICTURES OR VIDEOS. This commercial can be produced by PICTURES ONLY - no videos are needed.

If the buyer wants Stockshow Confidential to come to the ranch and film, cost will be all expenses to and from location of shoot for producer and field producer. No cost for editing or post production of the commercial.

The commercial will air during one episode of Stockshow Confidential where the footage from Leading A Legacy Fundraiser will appear. Date to be determined by Stockshow Confidential.



## 17 Iron Cross Wall Art

Thank you Glenn Holly Farm, Pennsylvania,  
for your donation

**VALUE - Handcrafted**

This hand painted canvas background is accented by a black metal cross. It is protected by glass and a handmade wooden frame. 32.5 inches tall and 28 inches wide in size. A Special Note: This is donated by Marshall Allison and his family of Hookstown, PA. Marshall is a current AJSA board member.



**VS.**



## 18 Iowa Hawkeyes vs. Nebraska Cornhuskers

Thank you Craig Gana and family, Nebraska,  
for your donation.

[www.gananisley.com](http://www.gananisley.com)

**VALUE - \$800**

Huge rivalry game! The Iowa Hawkeyes and the Nebraska Cornhuskers at Lincoln, Nebraska, Friday, November 29th at 11:00 am.

Come to Nebraska and enjoy a great tail-gating experience with the Gana Family. This package includes four tickets, premium seats; one night hotel stay; \$100 gift certificate for Husker gear; \$100 gift certificate to Lazlos Brewery and Grill (an unforgettable dining experience); and tailgating at the Gana Family Tailgate location where you will enjoy food and drinks.





## 19 Collectible Toy Tractor

Thank you GCF Shorthorns, Nebraska,  
for your donation.

**VALUE - Rare**

A Firestone limited edition Allis Chalmers D-15 with sprayer. This model is not sold in retail stores. Only 3,000 of these tractors have ever been made. Greg Crawford is a long time Shorthorn breeder and flies the Shorthorn flag high everyday. Thanks Greg for your donation.



## 20 Customized Handcrafted Jelly Cabinet

Thank you AJSA Director Dustin Smith  
for your donation

**VALUE - Handcrafted**

Get a customized, handmade jelly cabinet with your farm logo on it by AJSA Director Dustin Smith. 11 inches deep, 25 inches tall and 16 inches wide with two shelves. Door front has punched steel personalized by Dustin. Wood is solid oak. We can use other woods if desired. Hardwoods, Oak, Cherry, Walnut, Hickory, Ash and Pecan are recommended.



## 21 Montie Soules Cowboy Hat

**VALUE - We don't know yet because we haven't asked Montie if we can do this.**

Well to be quite honest with you, this is a surprise to even Montie himself. We are pretty sure he won't mind because he is a big believer in the American Junior Shorthorn Association. One thing we do know, if you purchase this hat, wear it, you will automatically have more enthusiasm, be engulfed with a tremendous amount of energy, and become a true, natural born leader. Welcome to the breed Mr. Montie Soules.



### SULL Blue Raspberry 2264

Grand Champion Bred and Owned ShorthornPlus Female, '13 National Junior Shorthorn Show

### SULL Crystal's Tootie

Grand Champion Female, '13 Iowa State Fair  
Division Champion, '13 National Junior  
Shorthorn Show



### SULL Crystal Judy

Grand Champion Bred & Owned Female,  
'12 National Junior Shorthorn Show  
Grand Champion Female, '12 Iowa State Fair Show

## 22 IVF Cycle or Conventional ET Flush

Thank you Sara Sullivan, Iowa, for your donation

**VALUE - A progressive breeder will bid without hesitation**

Selling choice of a IVF cycle or flush on these three animals - SULL Blue Raspberry 2264, SULL Crystal's Tootie or SULL Crystal Judy. All three heifers are calving before March 1, 2014. They will be available for your IVF Cycle or ET Flush for January or February calves. Sara will guarantee a minimum of six embryos on the conventional ET flush and guarantee three embryos on the IVF Cycle. Sara decided she wanted to donate something to this event since the National Junior Shorthorn Show is one of her favorite weeks of the year.

**You can purchase these items at auction from your dollars earned at Vegas casino night. Items include ...**

**36' Flat Screen TV; 4 tickets to the Iowa State vs. Kansas football game on 11.23.13 - 4th Row, 35 Yard Line - donated by Sullivan Supply; Genex \$100 Certificate toward customer semen freezing, donated by Genex "located in the Ozarks"; American Shorthorn Association Apparel, donated by ASA; Stock Show University Apparel, donated by Sullivan Supply; 12 pack of toilet paper, donated by Kent Jaecke; Preparation H, donated by Jeff Aegerter; and numerous other highly valued items.**



# WE APPRECIATE ALL OF OUR **CUSTOMERS** hard work & dedication.



"Thank you Sullivan Farms for selling me SULL Miss Montana 2974, or as I call her, Miss Ruby. Miss Ruby has made me surpass my dreams and goals receiving so far five Reserve Champion and eight Grand Champion Shorthorn titles, along with, three Reserve and two Grand Champion British Breeds titles. The 13 hour trip (one way) was well worth it

because I would not have been able to find such an amazing heifer for the affordable price. I can't wait to show her at Waco, Fort Worth, Houston, Austin and San Antonio."

- Danielle Thompson, TX



Manytime  
Champ &  
Champ  
Shorthorn  
PA Farm  
Show

"Since buying our first SULL heifer three years ago, the whole Sullivan crew has shown top notch customer service. They are always just a call or text away when you have questions and are always willing to help make feeding and management suggestions. We have bought heifers in several price

ranges and from several bloodlines and they have all gone on to do well in the show ring as well as in the pasture. We will continue to purchase cattle from Sullivan Farms with confidence in their cattle and their awesome customer service!"

- Mandy Clark, PA

"It has been an absolutely awesome experience purchasing a heifer from Sullivan Farms. We purchased our heifer sight unseen and from the moment she stepped off the trailer in Arkansas we couldn't have been happier.

She exceeded our expectations and then some. Everyone at Sullivan Farms has been great to work with and extremely helpful along the way. We are excited to see what the future holds for SULL Fancy Sable as she finishes her show career and makes the transition into the pasture!"

- Lucas Bolin, AR



"I have worked with a lot of individuals within the livestock industry and the services provided by Sullivan Farms, is second to none. John, Josh, Summer and the rest of the crew made my transition into the shorthorn breed comfortable and welcoming. They do it right!"

- Lisa Reid, CO



"I was a little reluctant on buying a heifer sight unseen. Knowing my price range and reviewing the sale line up, I had my top lots picked out. After consulting with Josh, he helped make my decision that much easier. I was very pleased to know my purchase was exactly how the heifer was described to me.

What impressed me more was the follow up I received after having the heifer delivered. Making sure I was happy with my purchase is why I have been a repeat customer for several years. Many thanks to Josh Elder and the Sullivan crew for all of their help in making this a successful show season."

- Meghan Kurtz & Family, IL



"We have several breeds of cattle on our commercial beef farm. The cows with Shorthorn in them are always the most gentle. So when I wanted to try showing cattle I wanted a registered Shorthorn from Sullivan Farms because I heard that

is where the good ones are. Yep, Sullivan Farms has some good ones, and if one has an attitude problem, John Sullivan, Josh Elder, or the friendly staff at Sullivan Farms will tell a girl like me "that heifer is not the best choice for a 80 pound girl to show." Honest friendly people who happen to raise high quality cattle."

- Renee Lock, IL







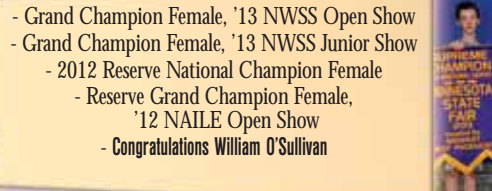
- Grand Champion ShorthornPlus, '13 Illinois State Fair, Jr Show & Illinois Beef Expo  
- Congratulations Derek Humphrey



- Supreme Champion Female, '12 American Royal  
- Supreme Champion Female, '12 NAILE  
- Congratulations Derek Humphrey



- National Champion ShorthornPlus Female, '12 NWSS  
- Reserve Grand Champion ShorthornPlus Female, '12 Shorthorn Junior Nationals  
- Congratulations Patrick Foley



- Grand Champion Female, '13 NWSS Open Show  
- Grand Champion Female, '13 NWSS Junior Show  
- 2012 Reserve National Champion Female  
- Reserve Grand Champion Female, '12 NAILE Open Show  
- Congratulations William O'Sullivan



- Supreme Champion Female, '13 Minnesota State Fair Open Show  
- Congratulations Paddy O'Sullivan



- Reserve Grand Champion Female, '13 Georgia National  
- Congratulations John Reasor



Reserve National Champion Female, '12 NWSS  
- Congratulations Rockin' G Land & Cattle and Sheldon Tibbs



- Reserve Grand Champion ShorthornPlus Female, '13 National Junior Shorthorn Show  
- Grand Champion Prospect Heifer, '13 NWSS  
- Grand Champion ShorthornPlus Female, '13 NWSS Open Show  
- Supreme Champion Female, '13 Purdue AGR  
- Congratulations Kane Aegerter



Grand Champion ShorthornPlus Female, '12 Shorthorn Junior Nationals  
- Congratulations Hannah Winegardner



- 2012 Reserve National Champion ShorthornPlus Female  
- Reserve Grand Champion ShorthornPlus Female, '12 NAILE Open Show  
- Division I Champion Female, '12 NAILE Open ShorthornPlus Show  
- Congratulations Sammi Schrag



- Supreme Champion Female, '13 Western Bonanza  
- Congratulations the the Schnoor Family



- Grand Champion Polled Shorthorn, '13 Illinois State Fair Jr & Open Show  
- Congratulations James Johnson



**SULLIVAN**

farms

701 Iowa Ave.  
Dunlap, IA 51529

**FIRST CLASS  
PRE-SORTED  
PAID**

Montezuma, Iowa  
Permit No. 30

Designed  
by



[www.designsbyarin.com](http://www.designsbyarin.com)



*Darla*